

PCM-9577

**Socket 370 Celeron/ Pentium III
SBC with LCD, LVDS, Ethernet,
Audio, & USB 2.0**

Users' Manual

Copyright

This document is copyrighted, © 2003. All rights are reserved. The original manufacturer reserves the right to make improvements to the products described in this manual at any time without notice.

No part of this manual may be reproduced, copied, translated or transmitted in any form or by any means without the prior written permission of the original manufacturer. Information provided in this manual is intended to be accurate and reliable. However, the original manufacturer assumes no responsibility for its use, nor for any infringements upon the rights of third parties that may result from such use.

Acknowledgements

Award is a trademark of Award Software International, Inc.

VIA is a trademark of VIA Technologies, Inc.

IBM, PC/AT, PS/2 and VGA are trademarks of International Business Machines Corporation.

Intel and Pentium are trademarks of Intel Corporation.

Microsoft Windows® is a registered trademark of Microsoft Corp.

RTL is a trademark of Realtek Semi-Conductor Co., Ltd.

ESS is a trademark of ESS Technology, Inc.

UMC is a trademark of United Microelectronics Corporation.

SMI is a trademark of Silicon Motion, Inc.

Creative is a trademark of Creative Technology LTD.

All other product names or trademarks are properties of their respective owners.

For more information on this and other Advantech products, please visit our websites at: **<http://www.advantech.com>**

<http://www.advantech.com/epc>

For technical support and service, please visit our support website at:

<http://support.advantech.com>

This manual is for the PCM-9577.

Part No. 2006957710

1st Edition, Printed Jan, 2003

Packing List

Before you begin installing your card, please make sure that the following materials have been shipped:

- 1 PCM-9577 all-in-one single board computer
- 1 CD disk for utility and drivers
- 1 startup manual
- 1 Power cable (p/n: 1703080101)
- 1 Mini Jumper*10 PCS Package (p/n: 9689000002)

If any of these items are missing or damaged, contact your distributor or sales representative immediately.

Model No. List	Description
PCM-9577F-00A1	W/ 100 BASE-T Ethernet, USB 1.1
PCM-9577FG-00A1	W/ 1000 BASE-T, USB2.0

Caution! *Possible danger of explosion if batteries (if any) are incorrectly replaced.*



Replace only with the same or equivalent type recommended by the manufacturer.

Achtung! *Dispose of used batteries (if any) according to the manufacturer's instructions.*

Caution! *Use only FCPGA/PFPGA Type II CPUs with PCM-9577.*



Other CPUs may cause board damage! Use of any alternative CPU voids warranty.

Additional Information and Assistance

1. Visit the Advantech web site at **www.advantech.com** where you can find the latest information about the product.
2. Contact your distributor, sales representative, or Advantech's customer service center for technical support if you need additional assistance.

Please have the following information ready before you call:

- Product name and serial number
- Description of your peripheral attachments
- Description of your software (operating system, version, application software, etc.)
- A complete description of the problem
- The exact wording of any error messages

Contents

Chapter 1	Introduction	2
1.1	Introduction	2
1.1	Highly integrated multimedia SBC.....	2
1.2	Features	3
1.3	Specifications	3
1.4	Board layout: dimensions.....	6
	Figure 1.1:Board layout: dimensions.....	6
Chapter 2	Installation	8
2.1	Jumpers.....	8
	Table 2.1:Jumpers.....	8
2.2	Connectors.....	8
	Table 2.2:Connectors.....	8
2.3	Locating jumpers.....	10
	Figure 2.1:Jumper locations.....	10
2.4	Locating Connectors	11
	Figure 2.2:Connectors (component side).....	11
2.5	Setting Jumpers	12
2.6	Clear CMOS (JP4)	13
	Table 2.3:CMOS clear (JP4).....	13
2.7	Installing DIMMs.....	13
2.8	IDE, CDROM hard drive connector (CN12, CN13).....	14
2.8.1	Connecting the hard drive.....	14
2.9	Solid State Disk.....	15
2.9.1	CompactFlash (CN29).....	15
2.10	Floppy drive connector (CN24)	15
2.10.1	Connecting the floppy drive	15
2.11	Parallel port connector (CN17)	16
2.12	Keyboard and PS/2 mouse connector (CN27)	16
2.13	Power,HDD LED, Reset Connector (CN11, J1).....	16
2.13.1	Power & HDD LED (CN13)	16
2.13.2	Reset switch (J1).....	17
2.14	Power connectors (CN7, CN9, FAN1).....	17
2.14.1	Peripheral power connector, -5 V, -12 V (CN7).....	17
2.14.2	Main power connector, +5 V, +12 V (CN9).....	17
2.14.3	CPU Fan power supply connector (FAN1).....	17
2.15	ATX power control connector (CN10, CN14).....	17
2.15.1	ATX feature (CN10) & soft power switch (CN14).....	17
2.16	IR connector (CN26).....	18

2.17	Audio interfaces (CN5, CN6).....	18
2.17.1	Audio connector (CN5)	18
2.17.2	CD audio input connector (CN6).....	19
2.18	COM port connector (CN16)	19
2.18.1	COM2 RS-232/422/485 setting (JP6).....	19
	Table 2.4: JP6: COM2 RS-232/422/485 select.....	19
2.19	VGA/LCD/LVDS interface connections	20
2.19.1	CRT display connector (CN22).....	20
2.19.2	Flat panel display connector (CN23).....	20
2.19.3	Extension flat panel connector (CN18)	20
2.19.4	LVDS LCD panel connector (CN15)	20
2.19.5	Panel type selection (S1).....	21
	Table 2.5:S1 Panel Type select.....	21
2.20	TV-out interface (optional) (CN20)	22
2.21	Ethernet configuration	22
2.21.1	100Base-T connector (CN3, PCM-9577F).....	22
2.21.2	1000Base-T connector (CN8, PCM-9577FG).....	22
2.21.3	Network boot	22
2.21.4	LAN controller power select (JP7).....	22
2.22	Watchdog timer configuration	23
2.22.1	Watchdog timer action (JP5)	23
	Table 2.7:Watchdog timer action (JP5).....	23
2.23	USB connectors (CN1, CN2).....	24
2.23.1	Embedded USB interface:	24
	Table 2.8:Embedded USB interface Signals.....	25
	Figure 2.4:Figure 3-1: USB Module (Type I)	26
	Figure 2.5:Figure 3-2: USB Type II/III	27

Chapter 3 Software Configuration30

3.1	Introduction	30
3.2	Connections to Three Standard LCDs.....	30
3.2.1	Toshiba LTM10C209A (640 x 480 TFT color LCD)...	30
	Table 3.1:Connections to Toshiba LTM10C209A	30
3.2.2	Toshiba LTM15C151A (1024 x 768 TFT color LCD).31	
	Table 3.2:Connections to Toshiba LTM15C151A	31
3.2.3	Toshiba LTM12C275A (800 x 600 TFT color LCD)...	32
	Table 3.3:Connections to Toshiba LTM12C275A	32

Chapter 4 Award BIOS Setup.....36

4.1	System test and initialization.....	36
4.1.1	System configuration verification.....	36
4.2	Award BIOS setup	37
4.2.1	Entering setup	37
	Figure 4.1:BIOS setup program initial screen	37
4.2.2	Standard CMOS Features setup.....	38
	Figure 4.2:CMOS Features setup.....	38

4.2.3	Advanced BIOS Features setup	39
	Figure 4.3:Advanced BIOS Features setup	39
4.2.4	Advanced Chipset Features setup	40
	Figure 4.4:Advanced Chipset Features setup	40
4.2.5	Integrated Peripherals	41
	Figure 4.5:Integrated Peripherals.....	41
4.2.6	Power Management Setup	41
	Figure 4.6:Power Management Setup.....	41
4.2.7	PnP/PCI Configurations.....	42
	Figure 4.7:PnP/PCI Configurations	42
4.2.8	PC Health Status	42
	Figure 4.8:PC Health Status.....	42
4.2.9	Frequency/Voltage Control.....	43
	Figure 4.9:Frequency/Voltage Control	43
4.2.10	Load Optimized Defaults.....	44
	Figure 4.10:Load BIOS defaults screen.....	44
4.2.11	Set Password	44
4.2.12	Save & Exit Setup.....	45
4.2.13	Exit Without Saving.....	46
Chapter 5	PCI SVGA Setup	48
5.1	Introduction	48
5.1.1	Chipset	48
5.1.2	Display memory.....	48
5.1.3	Display types.....	48
5.1.4	Dual/Simultaneous Display	49
	Figure 5.1:Selecting Display Settings.....	49
5.2	Installation of the SVGA Driver	50
5.2.1	Installation for Windows 95	50
5.2.2	Installation for Windows 98/Me.....	54
5.2.3	Installation for Windows NT.....	59
5.2.4	Installation for Windows 2000	64
5.2.5	Installation for Windows XP	69
5.3	Further Information	75
Chapter 6	Audio Setup.....	78
6.1	Introduction	78
6.2	DOS utilities.....	78
6.2.1	VIA Sound Blaster Pro compatible set up program	78
6.2.2	VIA Sound Blaster Installation	79
6.3	Driver installation.....	79
6.3.1	Before you begin.....	79
6.3.2	Windows 95/98 drivers.....	80
6.3.3	Windows NT drivers.....	87
6.3.4	Windows 2000 Drivers	90

Chapter	7	PCI Bus Ethernet Interface.....	96
	7.1	Introduction	96
	7.2	Installation of Ethernet driver	96
	7.2.1	Installation for MS-DOS and Windows 3.1	96
	7.2.2	Installation for Windows 98	97
	7.2.3	Installation for Windows 2000	100
	7.2.4	Installation for Windows NT	105
	7.3	Further information	111
Appendix A		Programming the Watchdog Timer	114
	A.1	Supported Input Timing Modes	114
Appendix B		Installing PC/104 Modules	118
	B.1	Installing PC/104 Modules.....	118
Appendix C		Pin Assignments	122
	C.1	CPU Fan Power Connector (FAN 1).....	122
	C.2	Ethernet 10/100Base-T Connector (CN3).....	122
	C.3	Ethernet 10/100/1000 BASE-T connector (CN8)	123
	C.4	Audio Connector (CN5).....	123
	C.5	Audio CD In Connector (CN6).....	124
	C.6	Main Power Connector (CN9)	125
	C.7	Keyboard and PS/2 Mouse Connector (CN27).....	126
	C.8	Floppy Disk Drive Connector (CN24).....	127
	C.9	PC/104 Connectors (ISA1)	128
	C.10	IDE Hard Drive Connector (CN12, CN13)	130
	C.11	Parallel Port Connector (CN17)	131
	C.12	Power & HDD LED Connector(CN11)	132
	C.13	Reset Button Connector (J1)	132
	C.14	USB Connector (CN1, CN2)	133
	C.15	LCD Inverter Backlight Connector (CN21)	133
	C.16	IR Connector (CN26).....	134
	C.17	CRT Display Connector (CN22)	134
	C.18	TV (video) Out Connector (CN20)	135
	C.19	Flat Panel Connector (CN23)	136
	C.20	Extended Flat Panel Display Connector (CN18)	137
	C.21	LCD Signal Mapping	138
	C.22	LVDS Connector (CN15)	139
	C.23	Peripheral Power Connector (CN7)	139
	C.24	COM Port Connector (CN16)	140
	C.25	CompactFlash Card Connector (CN29)	141
	C.26	ATX Power Feature Connector (CN10)	142
	C.27	GPIO Connector (CN25).....	143
	C.28	Mini PCI Connector (CN28).....	143

Appendix D	System Assignments	148
D.1	System I/O Ports.....	148
	Table D.1: System I/O Ports	148
D.2	1st MB memory map.....	149
	Table D.2: 1st MB memory map	149
D.3	DMA channel assignments.....	149
	Table D.3: DMA channel assignments	149
D.4	Interrupt assignments	150
	Table D.4: Interrupt assignments.....	150
Appendix E	Optional Extras	152
E.1	PCM-10586-5A00 Cable kit for PCM-9577F.....	152
E.2	PCM-10586-5G00 Cable kit for PCM-9577FG.....	153
E.3	Optional LCD cables 10.4" TFT LCD panel (CN23) ...	154
E.4	Optional USB cable (CN1 or CN2).....	154
E.5	ATX Power Control Cable (CN10).....	154
E.6	Optional 24 bit LCD cable adaptor	154
Appendix F	Mechanical Drawings.....	156
F.1	Mechanical Drawings.....	156

General Information

This chapter gives background information on the PCM-9577.

Sections include:

- Introduction
- Features
- Specifications
- Board layout and dimensions

Chapter 1 Introduction

1.1 Introduction

The PCM-9577 is a Socket370 Pentium III/512KB single board computer (SBC) with Gigabit, USB 2.0, audio controller, a 4X AGP SVGA controller, one PCI slot, and one PC/104 expansion connector. It supports Pentium III up to 1.26GHz. The PCM-9577's design is based on the 5.25" form factor that provides support for PC/104 and PCI module expansion. The 5.25" form factor also provides a convenient connector layout for easy assembly, more efficient cable connections and better overall embedded system integration. This compact (only 5.75" x 8") unit offers all the functions of a single board industrial computer, but still fits in the space of a 5.25" floppy drive.

On-board features include, four serial ports (three RS-232, one RS-232/422/485), one multi-mode parallel (ECP/EPP/SPP) port, 4 USB (Universal Serial Bus) ports, a floppy drive controller, and a keyboard/PS/2 mouse interface. The built-in high-speed PCI IDE controller supports both PIO and UDMA/100 bus master modes. Up to four IDE devices can be connected, including large hard disks, CD-ROM drives, and tape backup drives.

The PCM-9577 features power management to minimize power consumption. It complies with the "Green Function" standard and supports Doze, Standby and Suspend modes. In addition, the board's watchdog timer can automatically reset the system or generate an interrupt if the system stops due to a program bug or EMI.

Highly integrated multimedia SBC

The PCM-9577 is a highly integrated multimedia SBC that combines audio, video, and network functions on a single computer board the size of a 5.25" floppy drive. It provides 16-bit half-duplex, 8-bit full-duplex, integrated 3D audio, and up to 1024 x 768 resolution @ 16.8 M colors with 8/16/32MB system memory. Major on-board devices adopt PCI technology, to achieve outstanding computing performance when used with Intel® Pentium® processors. The PCM-9577 also supports an optional TV-out for NTSC/PAL multimedia applications.

1.2 Features

- Socket 370 supports up to Pentium III/512K 1.26GHz
- Supports Gigabit Ethernet (PCM-9577FG)
- Supports Embedded USB, 4 USB 2.0 ports (PCM-9577FG)
- 133MHz FSB and 4X AGP graphics for high performance applications
- Supports 24/36 bit TFT/DSTN LCD and 2 channel LVDS interface
- Optional TV-out and Mini PCI for WLAN applications

1.3 Specifications

Standard SBC Functions

- **CPU:** Socket 370 for Intel Celeron/Pentium III/512K (Tualatin) up to 1.26GHz
- **BIOS:** Award 256 KB Flash memory
- **System memory:** One DIMM socket accepts 64 MB up to 512 MB SDRAM
- **2nd cache memory:** 128/256/512 KB on the processor
- **Enhanced IDE interface:** Two channels supports up to four EIDE devices. BIOS auto-detect, PIO Mode 3 or Mode 4, UDMA 33 transfer. Primary IDE support up to UDMA 66/100 mode
- **FDD interface:** Supports up to two FDDs
- **Serial ports:** Four serial RS-232 ports, COM1, 3, 4: RS-232, COM2: RS-232/422/485
- **Parallel port:** One parallel port, supports SPP/EPP/ECP mode
- **Infrared port:** Shared with COM4. Transfer rates up to 115Kbps
- **Keyboard/mouse connector:** Supports PS/2 keyboard and a PS/2 mouse
- **Power management:** Supports power saving modes including Normal/Standby/Suspend modes. APM 1.2 compliant
- **Watchdog timer:** 62 level timer intervals
- **USB:** 4 USB 1.1 host ports (PCM-9577F)
4 USB 2.0 host Ports (PCM-9577FG)
- **Expansion:** One PCI slot and PC/104 connector for ISA and PCI control board.
- **Mini PCI:** (Optional) One Mini PCI slot for PCI peripheral device

Solid State Disk

- Supports one 50-pin socket for CFC type I/II

VGA/LCD Interface

- **Chipset:** VIA Twister chip with integrated Savage4 2D/3D/Video Accelerator
- **Frame buffer:** Supports 8/16/32MB frame buffer with system memory
- **Interface:** 4X AGP VGA/LCD interface, Support for 9, 12, 15, 18, 24, 36 bit TFT and 16, 24 bit DSTN panel
- **Display mode:** CRT Modes: 1280 x 1024@16bpp (60Hz), 1024 x 768@16bpp (85Hz); LCD/Simultaneous Modes: 1280 x 1024@16bpp (60Hz), 1024 x 768@16bpp (60Hz)
- **LVDS:** Supports 2 Channel (2 x 18bit) LVDS interface

TV-out (optional)

- **Chipset:** VIA VT1621
- Supports NTSC and PAL TV formats
- Provides Composite video and S-video outputs via optional TV-out cable (1703050306)
- Supports 640 x 480 and 800 x 600 input resolutions
- Supports Windows® 9x/ME/2000/NT and Windows XP drivers
- Over-scan, under-scan and position adjustable
- Auto-detection of TV presence Interface

Ethernet interface

- **Chipset:**
 - Intel 82551ER [Intel 82551QM optional] (PCM-9577F)
 - Intel 82540EM (PCM-9577FG)
- **Ethernet interface:**
 - IEEE 802.3u 100BASE-T Fast Ethernet compatible (PCM-9577F)
 - IEEE 802.3z/ab 1000 BASE-T Gigabit Ethernet compatible (PCM-9577FG)
- I/O address switchless setting
- Built-in boot ROM

Audio Function

- **Chipset:** VIA 82C686
- **Audio controller:** AC'97 ver. 2.0 compliant interface
- **Audio interface:** Microphone in, Line in, CD audio in, line out, Speaker L, Speaker R

Mechanical and Environmental

- **Dimensions (L x W):** 203 x 146 mm (8" x 5.75")
- **Power supply voltage:** +5V $\pm 5\%$, +12V $\pm 5\%$

- **Power requirements:**

 - Max**

 - 10A @ +5V, 1.02A @ +12V (within 5ms after power on)

 - typical**

 - 5.6A @ +5V, 0.17A @ +12V

 - (with 256 MB DRAM, Intel Pentium III/1.26GHz)

- **Operating temperature:** 0 ~ 60°C (32 ~ 140°F)
- **Operating Humidity:** 0% ~ 90% relative humidity, non-condensing
- **Weight:** 0.85 kg (weight of total package)

1.4 Board layout: dimensions

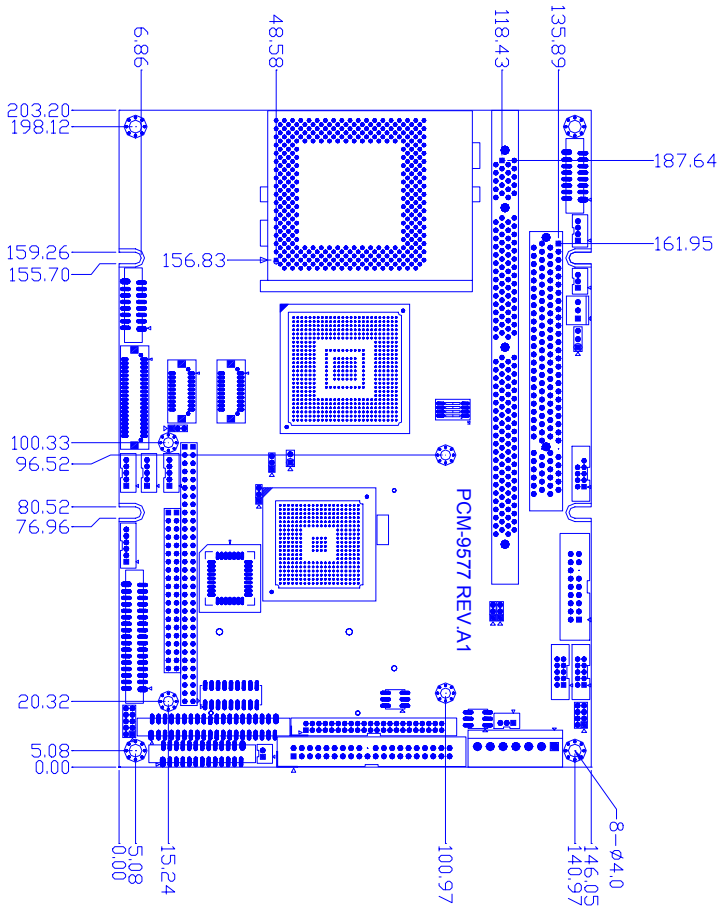


Figure 1.1: Board layout: dimensions

Installation

This chapter explains the setup procedures of PCM-9577 hardware, including instructions on setting jumpers and connecting peripherals, switches and indicators. Be sure to read all safety precautions before you begin the installation procedure.

Chapter 2 Installation

2.1 Jumpers

The PCM-9577 has a number of jumpers that allow you to configure your system to suit your application. The table below lists the functions of the various jumpers.

Table 2.1: Jumpers

Label	Function
JP1	PCI VIO select
JP2	USB Vcc select
JP3	Wake up from USB device select
JP4	CMOS clear
JP5	Watchdog timer action
JP6	COM2 RS232/422/485 setting
JP7	LAN controller power select
S1	Panel type select

2.2 Connectors

On-board connectors link the PCM-9577 to external devices such as hard disk drives, a keyboard, or floppy drives. The table below lists the function of each of the board's connectors.

Table 2.2: Connectors

Label	Function
CN1	USB channel 1, 2 connector
CN2	USB channel 3, 4 connector
CN3	100 Base-T Ethernet connector (PCM-9577F)
CN5	Audio connector
CN6	Audio CD in connector

Table 2.2: Connectors

CN7	Peripheral power connector
CN8	Gigabit Ethernet connector(PCM-9577FG)
CN9	EBX Main Power connector
CN10	ATX feature connector
CN11	Power & HDD LED connector
CN12	IDE hard drive connector (secondary)
CN13	IDE hard drive connector (primary)
CN14	ATX power on/off switch connector
CN15	LVDS connector
CN16	COM port connector
CN17	Parallel port connector
CN18	Ext. flat panel connector
CN19	Backlight VR connector
CN20	TV-out connector (optional)
CN21	Backlight control connector
CN22	CRT display connector
CN23	Flat panel connector
CN24	Floppy drive connector
CN25	GPIO connector
CN26	IR connector
CN27	Keyboard and PS/2 mouse connector
CN28	Mini PCI connector
CN29	CFC connector
Fan1	CPU fan power connector
J1	reset button connector
ISA1	PC/104 expansion

2.3 Locating jumpers

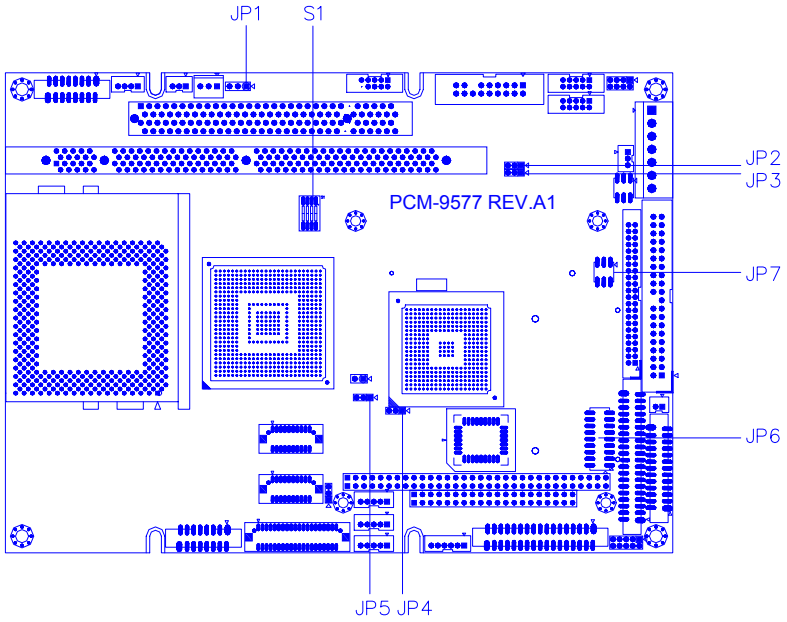


Figure 2.1: Jumper locations

2.4 Locating Connectors

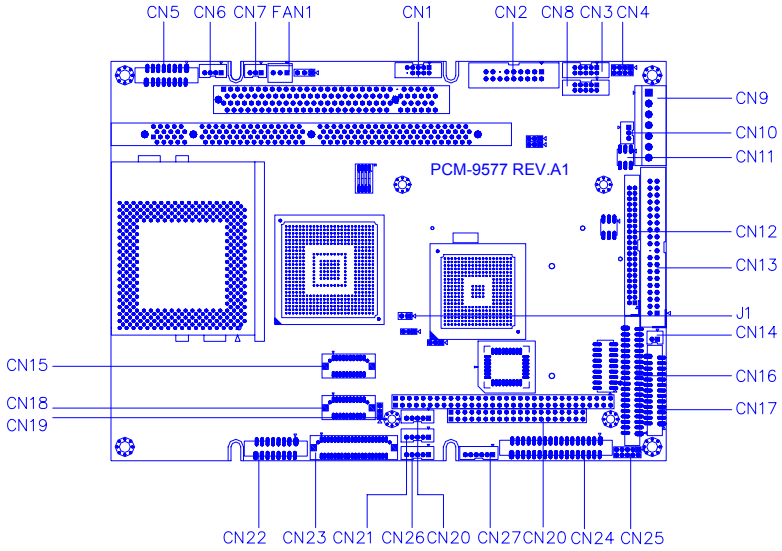
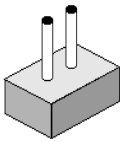


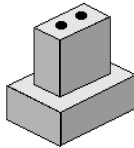
Figure 2.2: Connectors (component side)

2.5 Setting Jumpers

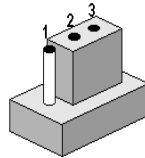
You may configure your card to match the needs of your application by setting jumpers. A jumper is a metal bridge used to close an electric circuit. It consists of two metal pins and a small metal clip (often protected by a plastic cover) that slides over the pins to connect them. To “close” a jumper, you connect the pins with the clip. To “open” a jumper, you remove the clip. Sometimes a jumper will have three pins, labeled 1, 2 and 3. In this case you would connect either pins 1 and 2, or 2 and 3.



open

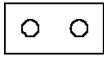


closed



closed 2-3

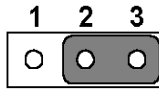
The jumper settings are schematically depicted in this manual as follows:.



open



closed



closed 2-3

A pair of needle-nose pliers may be helpful when working with jumpers.

If you have any doubts about the best hardware configuration for your application, contact your local distributor or sales representative before you make any changes.

Generally, you simply need a standard cable to make most connections.

2.6 Clear CMOS (JP4)

Warning! To avoid damaging the computer, always turn off the power supply before setting “Clear CMOS.” Before turning on the power supply, set the jumper back to “3.0 V Battery On.”

This jumper is used to erase CMOS data and reset system BIOS information.

The procedure for clearing CMOS is:

1. Turn off the system.
2. Short pin 2 and pin 3.
3. Return jumper to pins 1 and 2.
4. Turn on the system. The BIOS is now reset to its default setting

Table 2.3: CMOS clear (JP4)



* default setting

2.7 Installing DIMMs

The procedure for installing DIMMs is described below. Please follow these steps carefully. The number of pins are different on either side of the breaks, so the module can only fit in one way. DIMM modules have different pin contacts on each side, and therefore have a higher pin density.

1. Make sure that the two handles of the DIMM socket are in the “open” position. i.e. The handles remain leaning outward.

2. Slowly slide the DIMM module along the plastic guides on both ends of the socket.
3. Press the DIMM module right down into the socket, until you hear a click. This is when the two handles have automatically locked the memory module into the correct position of the socket.

To **remove** the memory module, just push both handles outward, and the module will be ejected from the socket.

2.8 IDE, CDROM hard drive connector (CN12, CN13)

The PCM-9577 provides 2 IDE channels which you can attach up to four Enhanced Integrated Device Electronics hard disk drives or CDROM to the PCM-9577's internal controller. The PCM-9577's IDE controller uses a PCI interface. This advanced IDE controller supports faster data transfer, PIO mode 3, mode 4 and UDMA/100. The secondary channel supports UDMA/33 only.

2.8.1 Connecting the hard drive

Connecting drives is done in a daisy-chain fashion. It requires one of two cables (not included in this package), depending on the drive size. 1.8" and 2.5" drives need a 1 x 44-pin to 2 x 44-pin flat-cable connector. 3.5" drives use a 1 x 44-pin to 2 x 40-pin connector.

Wire number 1 on the cable is red or blue, and the other wires are gray.

1. Connect one end of the cable to CN12 or CN13. Make sure that the red (or blue) wire corresponds to pin 1 on the connector, which is labeled on the board (on the right side).
2. Plug the other end of the cable into the Enhanced IDE hard drive, with pin 1 on the cable corresponding to pin 1 on the hard drive. (See your hard drive's documentation for the location of the connector.)

If desired, connect a second drive as described above.

Unlike floppy drives, IDE hard drives can connect to either end of the cable. If you install two drives, you will need to set one as the master and one as the slave by using jumpers on the drives. If you install only one drive, set it as the master.

2.9 Solid State Disk

The PCM-9577 provides a CompactFlash™ card socket and DiskOnChip socket for Solid state disk solutions.

2.9.1 CompactFlash (CN29)

The CompactFlash card shares a secondary IDE channel which can be enabled/disabled via the BIOS settings.

2.10 Floppy drive connector (CN24)

You can attach up to two floppy drives to the PCM-9577's on-board controller. You can use any combination of 5.25" (360 KB and 1.2 MB) and/or 3.5" (720 KB, 1.44 MB, and 2.88 MB) drives.

A 34-pin daisy-chain drive connector cable is required for a dual-drive system. On one end of the cable is a 34-pin flat-cable connector. On the other end are two sets of floppy disk drive connectors. Each set consists of a 34-pin flat-cable connector (usually used for 3.5" drives) and a printed-circuit board connector (usually used for 5.25" drives).

2.10.1 Connecting the floppy drive

1. Plug the 34-pin flat-cable connector into CN24. Make sure that the red wire corresponds to pin one on the connector.
2. Attach the appropriate connector on the other end of the cable to the floppy drive(s). You can use only one connector in the set. The set on the end (after the twist in the cable) connects to the A: drive. The set in the middle connects to the B: drive.
3. If you are connecting a 5.25" floppy drive, line up the slot in the printed circuit board with the blocked-off part of the cable connector.

If you are connecting a 3.5" floppy drive, you may have trouble determining which pin is number one. Look for a number printed on the circuit board indicating pin number one. In addition, the connector on the floppy drive may have a slot. When the slot is up, pin number one should be on the right. Check the documentation that came with the drive for more information.

If you desire, connect the B: drive to the connectors in the middle of the cable as described above.

In case you need to make your own cable, you can find the pin assignments for the board's connector in Appendix C.

2.11 Parallel port connector (CN17)

Normally, the parallel port is used to connect the card to a printer. The PCM-9577 includes a multi-mode (ECP/EPP/SPP) parallel port accessed via CN17 and a 26-pin flat-cable connector. You will need an adapter cable if you use a traditional DB-25 connector. The adapter cable has a 26-pin connector on one end, and a DB-25 connector on the other.

The parallel port is designated as LPT1, and can be disabled or changed to LPT2 or LPT3 in the system BIOS setup.

The parallel port interrupt channel is designated to be IRQ7.

You can select ECP/EPP DMA channel via BIOS setup.

2.12 Keyboard and PS/2 mouse connector (CN27)

The PCM-9577 board provides a keyboard connector that supports both a keyboard and a PS/2 style mouse. In most cases, especially in embedded applications, a keyboard is not used. If the keyboard is not present, the standard PC/AT BIOS will report an error or fail during power-on self-test (POST) after a reset. The PCM-9577's BIOS standard setup menu allows you to select "All, But Keyboard" under the "Halt On" selection. This allows no-keyboard operation in embedded system applications, without the system halting under POST.

2.13 Power,HDD LED, Reset Connector (CN11, J1)

Next, you may want to install external switches to monitor and control the PCM-9577. These features are optional: install them only if you need them. The power & HDD LED connector (CN11) is a 6-pin male, dual in-line header. It provides connections for a hard disk access indicator, and power on indicator.

2.13.1 Power & HDD LED (CN13)

The HDD LED indicator for hard disk access is an active low signal (24 mA sink rate). Power supply activity LED indicator.

2.13.2 Reset switch (J1)

If you install a reset switch, it should be an open single pole switch. Momentarily pressing the switch will activate a reset. The switch should be rated for 10 mA, 5 V.

2.14 Power connectors (CN7, CN9, FAN1)

2.14.1 Peripheral power connector, -5 V, -12 V (CN7)

Supplies secondary power to devices that require -5 V and -12 V.

2.14.2 Main power connector, +5 V, +12 V (CN9)

Supplies main power to the PCM-9577 (+5 V), and to devices that require +12 V.

2.14.3 CPU Fan power supply connector (FAN1)

Provides power supply to CPU cooling fan, and fan speed detects signal input. Only present when +5 V and +12 V power is supplied to the board.

2.15 ATX power control connector (CN10, CN14)

2.15.1 ATX feature (CN10) & soft power switch (CN14)

The PCM-9577 can support an advanced soft power switch function, if an ATX power supply is used. To enable the soft power switch function:

1. Get the specially designed ATX-to-EBX power cable (PCM-9577 optional item, part no. 1703070101)
2. Connect the 3-pin plug of the cable to CN10 (ATX feature connector).
3. Connect the power on/off button to CN14. (A momentary type of button should be used.)

Important *Make sure that the ATX power supply can take at least a 10 mA load on the 5 V standby lead (5VSB). If not, you may have difficulty powering on your system.*

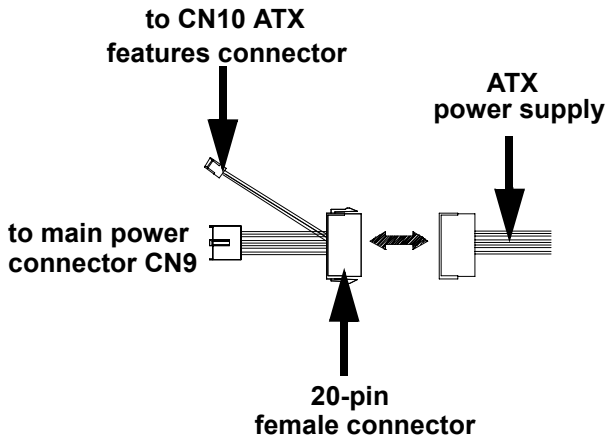


Figure 2.3: Wiring for ATX soft power switch function

2.16 IR connector (CN26)

This connector supports the optional wireless infrared transmitting and receiving module. This module mounts on the system case. You must configure the setting through BIOS setup.

2.17 Audio interfaces (CN5, CN6)

The PCM-9577 is equipped with a high-quality audio interface, which provides 16-bit CD-quality recording and playback as well as OPL3 compatible FM music. It is supported by all major operating systems.

2.17.1 Audio connector (CN5)

The PCM-9577 provides all major audio signals on a 16-pin flat-cable connector, CN5. These audio signals include Microphone in (mono), Line in (stereo), Line out (stereo), and Speaker out (stereo). If you use traditional telephone jack connectors for these audio signals, you will need an adapter cable.

2.17.2 CD audio input connector (CN6)

Any CD-ROM drive can provide analog audio signal output when used as a music CD player. The CN6 on PCM-9577 is a connector to input CD audio signals into the audio controller. The audio cable of your CD-ROM drive will be used to connect to CN6.

2.18 COM port connector (CN16)

The PCM-9577 provides four serial ports (COM1, 3, 4: RS-232; COM2: RS-232/422/485) in one COM port connector. The COM port connector is a 40-pin, dual-inline, male header. It provides connections for serial devices (a mouse, etc.) or a communication network. You can find the pin assignments for the COM port connector in Appendix C.

2.18.1 COM2 RS-232/422/485 setting (JP6)

COM2 can be configured to operate in RS-232, RS-422, or RS-485 mode. This is done via JP6

Table 2.4: JP6: COM2 RS-232/422/485 select

PINS	RS-232*	RS-422	RS-485
1-2	Open	Open	Closed
3-4	Open	Closed	Open
5-6	Closed	Open	Open
7-9	Closed	Open	Open
8-10	Closed	Open	Open
9-11	Open	Closed	Closed
10-12	Open	Closed	Closed
13-15	Closed	Open	Open
14-16	Closed	Open	Open
15-17	Open	Closed	Closed
16-18	Open	Closed	Closed

2.19 VGA/LCD/LVDS interface connections

The PCM-9577's PCI SVGA interface can drive conventional CRT displays and is capable of driving a wide range of flat panel displays, including passive LCD and active LCD displays. The board has three connectors to support these displays: one for standard CRT VGA monitors, one for flat panel displays, and one for LVDS type LCD panels.

2.19.1 CRT display connector (CN22)

CN22 is a 16-pin, dual-inline header used for conventional CRT displays. A simple one-to-one adapter can be used to match CN22 to a standard 15-pin D-SUB connector commonly used for VGA.

Pin assignments for CRT display connector CN22 are detailed in Appendix C.

2.19.2 Flat panel display connector (CN23)

CN23 consists of a 40-pin connector which can support a 24-bit LCD panel. It is Hirose's product no. DF13A-40DP-1.25 V

The PCM-9577 provides a bias control signal on CN23 that can be used to control the LCD bias voltage. It is recommended that the LCD bias voltage not be applied to the panel until the logic supply voltage (+5 V or +3.3 V) and panel video signals are stable. Under normal operation, the control signal (ENAVEE) is active high. When the PCM-9577's power is applied, the control signal is low until just after the relevant flat panel signals are present. CN23 can connect up to 24 bit TFT LCD.

2.19.3 Extension flat panel connector (CN18)

CN18 consists of a 20-pin connector which is Hirose's product no. DF13A-20DP-1.25V. The PCM-9577 supports a 36-bit LCD panel which must be connected to both the CN23 (40-pin) and the CN18 (20-pin). The pin assignments for both CN23 and the CN18 can be found in Appendix C

2.19.4 LVDS LCD panel connector (CN15)

The PCM-9577 uses the VIA Twister chip that supports 2 channel (2 x 18 bit) LVDS LCD panel displays. Users can connect to either an 18-bit or 36-bit LVDS LCD with CN15.

2.19.5 Panel type selection (S1)

S1 is an 8 segment DIP switch for DSTN/TFT panel type and resolution functions.

Table 2.5: S1 Panel Type select

SW	SW	SW	SW			
1-1	1-2	1-3	1-4	Panel type		
ON	ON	ON	ON	DSTN**	640x480	18bit
ON	ON	ON	OFF	TFT	640x480	18bit
ON	ON	OFF	ON	TFT	640x480	LVDS
ON	ON	OFF	OFF	(Resvd)		
ON	OFF	ON	ON	(Resvd)		
ON	OFF	ON	OFF	DSTN**	800x600	18bit
ON	OFF	OFF	ON	TFT*	800x600	18bit
ON	OFF	OFF	OFF	TFT	800x600	LVDS
OFF	ON	ON	ON	(Resvd)		
OFF	ON	ON	OFF	(Resvd)		
OFF	ON	OFF	ON	DSTN**	1024x768	36bit
OFF	ON	OFF	OFF	TFT	1024x768	36bit
OFF	OFF	ON	ON	TFT	1024x768	1Chan LVDS
OFF	OFF	ON	OFF	TFT	1024x768	2Chan LVDS
OFF	OFF	OFF	ON	TFT	1024x768	18bit
OFF	OFF	OFF	OFF	TFT	1024x768	24bit

* Default setting

** will support in the future

2.20 TV-out interface (optional) (CN20)

The PCM-9577 board provides optional TV-out via CN20. This consists of a 5-pin wafer box header. Output supports composite video and S-video connectors via an optional cable kit (p/n: 1103050306). TV-out generators use both NTSC and PAL formats.

To set up your video interface:

1. Run the appropriate installation program located on the utility disk. That's all there is to it.

2.21 Ethernet configuration

The PCM-9577 is equipped with a high performance 32-bit PCI-bus Ethernet interface which is fully compliant with IEEE 802.3U 10/100Mbps CSMA/CD standards. It is supported by all major network operating systems.

The medium type can be configured via the RSET8139.EXE program included on the utility disk. (See Chapter 3 for detailed information.)

2.21.1 100Base-T connector (CN3, PCM-9577F)

10/100Base-T connects to the PCM-9577F via an adapter cable to a 10-pin polarized header (CN3).

2.21.2 1000Base-T connector (CN8, PCM-9577FG)

10/100/1000 Base-T connects to the PCM-9577FG via an adapter cable to a 10-pin polarized header (CN8).

2.21.3 Network boot

The Network Boot feature can be utilized by incorporating the Boot ROM image files for the appropriate network operating system. The Boot ROM BIOS files are included in the system BIOS, which is on the utility CD disc.

2.21.4 LAN controller power select (JP7)

Table 2.6: LAN controller power select (JP7)

5 V*

Standby 5V

Table 2.6: LAN controller power select (JP7)



* default setting

Note: *PCM-9577 supports Wake-on-LAN. For Wake-on LAN, JP7 has to be set to the Standby 5 V position*

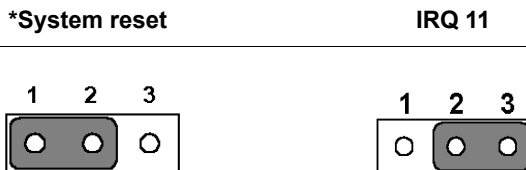
2.22 Watchdog timer configuration

An on-board watchdog timer reduces the chance of disruptions which EMP (electro-magnetic pulse) interference can cause. This is an invaluable protective device for standalone or unmanned applications. Setup involves one jumper and running the control software (refer to Appendix A).

2.22.1 Watchdog timer action (JP5)

When the watchdog timer activates (CPU processing has come to a halt), it can reset the system or generate an interrupt on IRQ11. This can be set via setting JP5 as shown below:

Table 2.7: Watchdog timer action (JP5)



* default setting

2.23 USB connectors (CN1, CN2)

The PCM-9577 board provides up to four USB (Universal Serial Bus) ports which support USB 1.1 (PCM-9577F) or USB 2.0 (PCM-9577FG). This gives complete Plug and Play, and hot attach/detach for up to 127 external devices. The USB interfaces comply with USB specification Rev. 1.1, and are fuse protected.

The USB interface is accessed through two 5 x 2-pin flat-cable connectors, CN1 (USB1, 2); and CN2 (USB3, 4) in the PCM-9577F model. The PCM-9577FG Support Embedded USB interface in PCM-9577FG model which used one 9 x 2-pin header connector for USB 3, 4 and one 5 x 2 pin header connector for USB 1, 2. You will need an adapter cable if you use a standard USB connector. The adapter cable has a 5 x 2-pin connector on one end and a USB connector on the other.

The USB interfaces can be disabled in the system BIOS setup.

2.23.1 Embedded USB interface:

Overview

The Embedded USB interface Specification defines an alternate implementation for small form factor USB Module referred to in this specification as a Embedded USB Module

This specification uses a qualified sub-set of the same signal protocol, electrical definitions, and configuration definitions as the USB 2.0 Specification.

The primary differences between a standard USB 2.0 and a Embedded USB Interface are:

- * Support more one Vcc +5V signal in the Embedded USB Interface
- * Support Vcc 3.3V and OVER CURRENT signal in the Embedded USB Interface

2.23.1.1 Features and Benefits

*Upgrade ability. Embedded USB Module are removable and upgradeable with available“new technology” cards.

* Flexibility. A single Mini PCI interface can accommodate various types of communications, Flash memory storage, and Industry control I/O devices.

* Serviceability. Mini PCI Cards can be removed and easily serviced if they fail.

- * Reliability. Mini PCI Cards will be mass produced and, consequently, of higher quality than low-volume custom boards.
- * Reduced Size. Embedded USB Module are smaller than PCMCIA cards, Small PCI cards
- * High Performance. The USB 2.0 high-performance characteristics which Transfer rate up to 480Mbps

2.23.1.2 Embedded USB Connector dimension and Pin assignment

Embedded USB on board connector is used pitch 2 x 9 Pin header with 2.54mm pin

Figure 1-1: Embedded USB Connector Dimension

Pin Assignment

Table 2.8: Embedded USB interface Signals

Pin	Signal	Pin	Signal
1	GND	2	GND
3	GND (USB)	4	GND (USB)
5	Vcc (USB)	6	Vcc (USB)
7	Data 1-	8	Data 2-
9	Data 1+	10	Data 2+
11	GND (USB)	12	GND (USB)
13	Key	14	N.C/ Over Current.
15	Vcc5V	16	N.C./ Vcc3.3V
17	GND	18	GND

2.23.1.3. Mechanical Specification

I. Overview

The specification defines three form factors: Type I, Type II and Type III are dual 18-pin connector interfaces; The all of type connector are used PC standard 2.54mm pin pitch pin header

II. Type I Form Factor

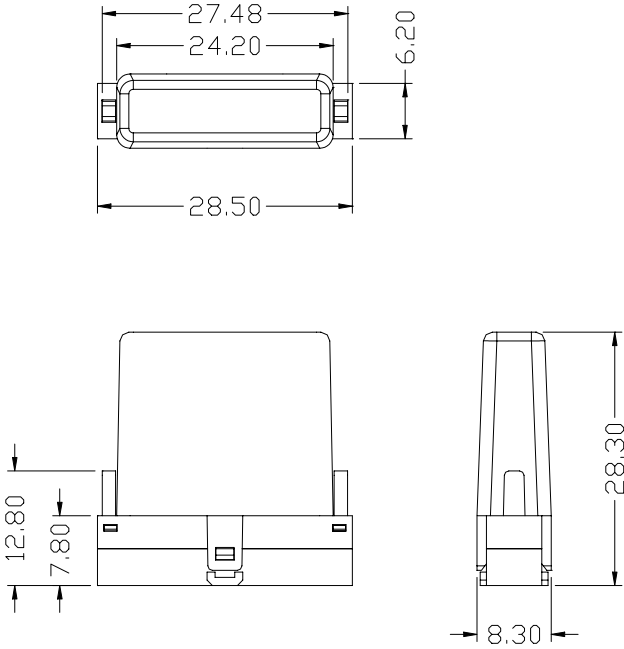
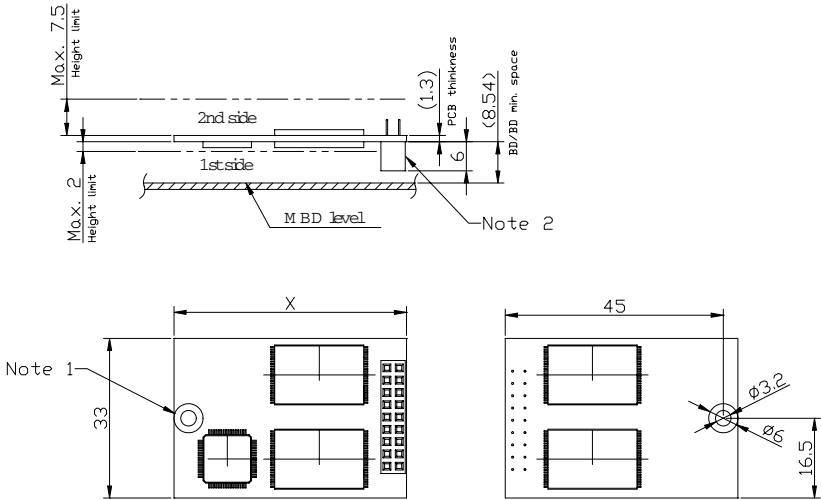


Figure 2.4: Figure 3-1: Embedded USB Module (Type I) Form Factor

- Note:**
1. Type I will support Flash memory module only
 2. Type I is a vertical assembly with mainboard (SBC)

III. 3.3 Type II/III Form Factor



Notes:

1. Unit is metric.
2. $\phi 6$ area preserved for Screw cap(Bothe side), No trace.
3. Pin Header 2 Row x 9 poistions (Female. Pitch 2.54 mm SQ)
4. Type 2 X=50.8mm, type 3 X=76.2mm

Figure 2.5: Figure 3-2: Embedded USB Type II/III Form Factor

- Notes:
1. Type II/III will support Flash memory Module, Blue-Tooth Module, Wireless LAN Module, and Industrial I/O control module
 2. Type II/III is Board to Board horizontal assembly with Mainboard (SBC)

Software Configuration

This chapter details the software configuration information. It shows you how to configure the card to match your application requirements. The AWARD System BIOS is covered in Chapter 4.

Sections include:

- Introduction
- Connections for standard LCDs
- Ethernet interface configuration.

Chapter 3 Software Configuration

3.1 Introduction

The PCM-9577 system BIOS and custom drivers are located in a 256 Kbyte, Flash ROM device, designated U17. A single Flash chip holds the system BIOS, VGA BIOS and network Boot ROM image. The display can be configured via CMOS settings. This method minimizes the number of chips and difficulty of configuration. To set different types of LCD panels, please choose “panel type” from the “integrated peripherals” menu in CMOS setup.

3.2 Connections to Three Standard LCDs

The following tables illustrate typical LCD connection pinouts for the PCM-9577.

3.2.1 Toshiba LTM10C209A (640 x 480 TFT color LCD)

Table 3.1: Connections to Toshiba LTM10C209A

LTM10C209A		PCM-9577 CN23	
Pin	Name	Pin	Name
1	GND	3	GND
2	CLK	35	SHFCLK
3	GND	34	GND
4	R0	27	P18
5	R1	28	P19
6	R2	29	P20
7	GND	33	GND
8	R3	30	P21
9	R4	31	P22
10	R5	32	P23
11	GND	34	GND
12	G0	19	P10
13	G1	20	P11
14	G2	21	P12

Table 3.1: Connections to Toshiba LTM10C209A

15	GND	8	GND
16	G3	22	P13
17	G4	23	P14
18	G5	24	P15
19	GND	8	GND
20	ENAB	37	M/DE
21	GND	4	GND
22	B0	11	P2
23	B1	12	P3
24	B2	13	P4
25	GND	4	GND
26	B3	14	P5
27	B4	15	P6
28	B5	16	P7
29	GND	3	GND
30	VDD	1	+5 V
31	VDD	2	+5 V

3.2.2 Toshiba LTM15C151A (1024 x 768 TFT color LCD)

Table 3.2: Connections to Toshiba LTM15C151A

LTM15C151A		PCM-9577 CN23	
Pin	Name	Pin	Name
CN1-1	GND	CN 11-33	GND
CN1-2	NCLK	CN 11-35	LDSCCLK1
CN1-3	NC		
CN1-4	NC		
CN1-5	GND	CN 11-3	GND
CN1-6	OR0	CN 11-9	PD0
CN1-7	OR1	CN 11-11	PD2
CN1-8	OR2	CN 11-13	PD4
CN1-9	OR3	CN 11-15	PD6
CN1-10	OR4	CN 11-17	PD8
CN1-11	OR5	CN 11-19	PD10
CN1-12	GND	CN 11-3	GND

Table 3.2: Connections to Toshiba LTM15C151A

CN1-13	OG0	CN 11-21	PD12
CN1-14	OG1	CN 11-23	PD14
CN1-15	OG2	CN 11-25	PD16
CN1-16	OG3	CN 11-27	PD18
CN1-17	OG4	CN 11-29	PD20
CN1-18	OG5	CN 11-31	PD22
CN1-19	GND	CN 10-1	GND
CN1-20	OB0	CN 10-3	PD24
CN1-21	OB1	CN 10-5	PD26
CN1-22	OB2	CN 10-7	PD28
CN1-23	OB3	CN 10-9	PD30
CN1-24	OB4	CN 10-11	PD32
CN1-25	OB5	CN 10-13	PD34
CN1-26	ENAB	CN 11-37	M/DE
CN1-27	GND	CN 11-34	GND
CN1-28	VDD	CN 11-1	+5V
CN1-29	VDD	CN 11-2	+5V
CN1-30	GND	CN 11-8	GND

3.2.3 Toshiba LTM12C275A (800 x 600 TFT color LCD)**Table 3.3: Connections to Toshiba LTM12C275A**

LTM12C275A		PCM-9577 CN23	
Pin	Name	Pin	Name
1	GND	3	GND
2	NCLK	35	SHFCLK
3	NC	-	NC
4	NC	-	NC
5	GND	4	GND
6	R0	27	P18
7	R1	28	P19
8	R2	29	P20
9	R3	30	P21
10	R4	31	P22

Table 3.3: Connections to Toshiba LTM12C275A

11	R5	32	P23
12	GND	8	GND
13	G0	19	P10
14	G1	20	P11
15	G2	21	P12
16	G3	22	P13
17	G4	23	P14
18	G5	24	P15
19	GND	33	GND
20	B0	11	P2
21	B1	12	P3
22	B2	13	P4
23	B3	14	P5
24	B4	15	P6
25	B5	16	P7
26	ENAB	37	M/DE
27	GND	34	GND
28	VCC	5	+5 V
29	VCC	6	+5 V
30	GND	39	GND

CHAPTER 4

Award BIOS Setup

This chapter describes how to set BIOS configuration data.

Chapter 4 Award BIOS Setup

4.1 System test and initialization

These routines test and initialize board hardware. If the routines encounter an error during the tests, you will either hear a few short beeps or see an error message on the screen. There are two kinds of errors: fatal and non-fatal. The system can usually continue the boot up sequence with non-fatal errors. Non-fatal error messages usually appear on the screen along with the following instructions:

press <F1> to RESUME

Write down the message and press the F1 key to continue the bootup sequence.

4.1.1 System configuration verification

These routines check the current system configuration against the values stored in the board's CMOS memory. If they do not match, the program outputs an error message. You will then need to run the BIOS setup program to set the configuration information in memory.

There are three situations in which you will need to change the CMOS settings:

1. You are starting your system for the first time
2. You have changed the hardware attached to your system
3. The CMOS memory has lost power and the configuration information has been erased.

The PCM-9577 Series' CMOS memory has an integral lithium battery backup. The battery backup should last ten years in normal service, but when it finally runs down, you will need to replace the complete unit.

4.2 Award BIOS setup

Award's BIOS ROM has a built-in Setup program that allows users to modify the basic system configuration. This type of information is stored in battery-backed CMOS RAM so that it retains the Setup information when the power is turned off.

4.2.1 Entering setup

Power on the computer and press immediately. This will allow you to enter Setup.

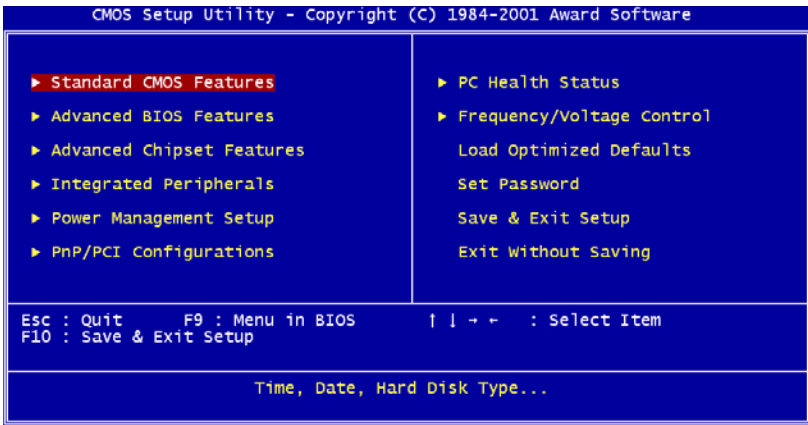


Figure 4.1: BIOS setup program initial screen

4.2.2 Standard CMOS Features setup

When you choose the Standard CMOS Features option from the Initial Setup Screen menu, the screen shown below is displayed. This standard Setup Menu allows users to configure system components such as date, time, hard disk drive, floppy drive and display. Once a field is highlighted, on-line help information is displayed in the left bottom of the Menu screen.

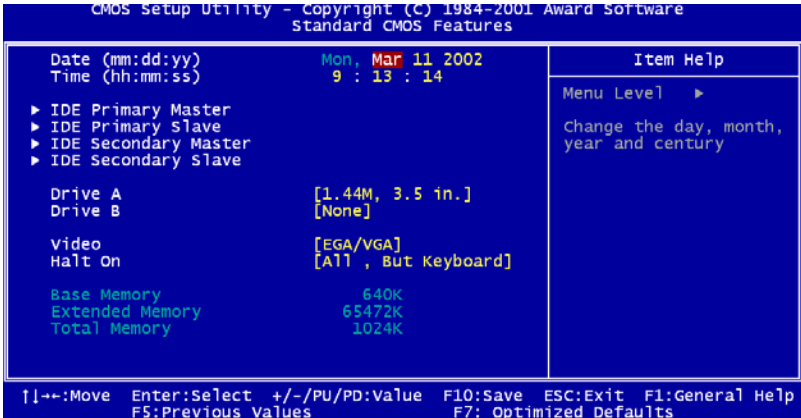


Figure 4.2: CMOS Features setup

4.2.3 Advanced BIOS Features setup

By choosing the Advanced BIOS Features Setup option from the Initial Setup Screen menu, the screen below is displayed. This sample screen contains the manufacturer’s default values for the PCM-9577 Series.

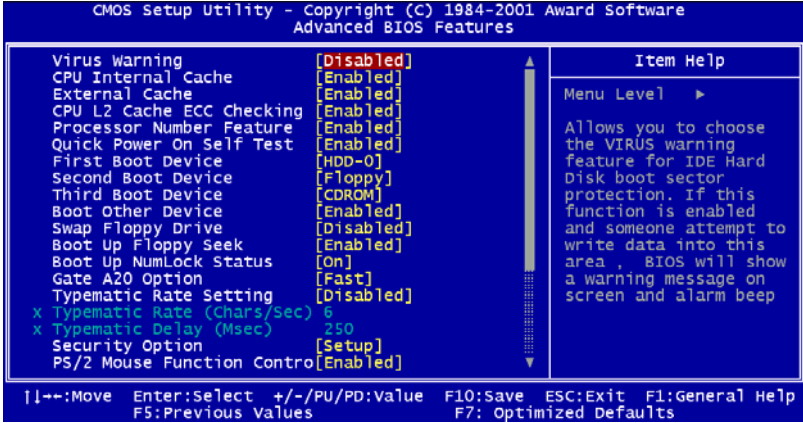


Figure 4.3: Advanced BIOS Features setup

4.2.4 Advanced Chipset Features setup

By choosing the Advanced Chipset Features option from the Initial Setup Screen menu, the screen below is displayed. This sample screen contains the manufacturer's default values for the PCM-9577 Series.

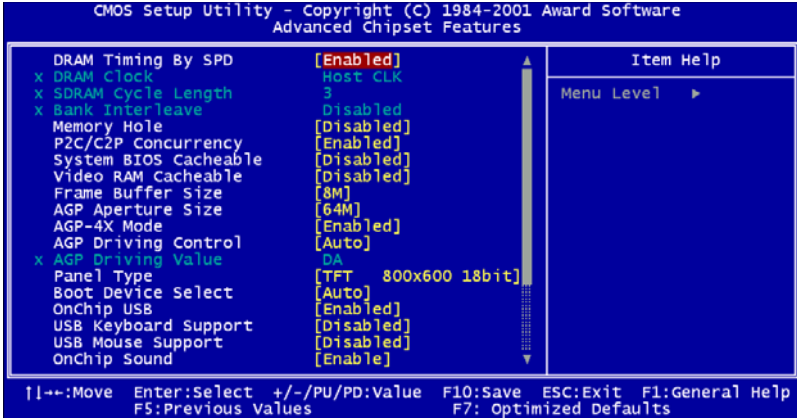


Figure 4.4: Advanced Chipset Features setup

4.2.5 Integrated Peripherals

Choosing the Integrated Peripherals option from the Initial Setup Screen menu should produce the screen below. Here we see the manufacturer's default values for the PCM-9577 Series.

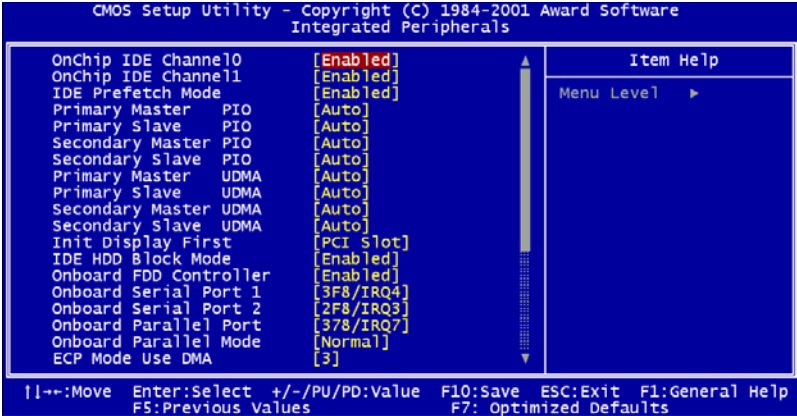


Figure 4.5: Integrated Peripherals

4.2.6 Power Management Setup

By choosing the Power Management Setup option from the Initial Setup Screen menu, the screen below is displayed. This sample screen contains the manufacturer's default values for the PCM-9577 Series.

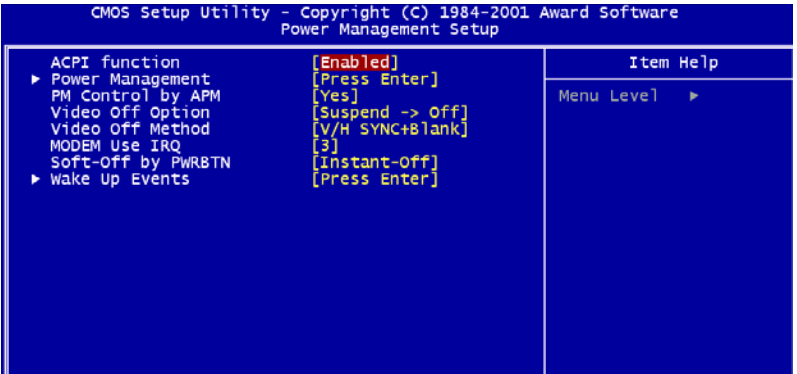


Figure 4.6: Power Management Setup

4.2.7 PnP/PCI Configurations

By choosing the PnP/PCI Configurations option from the Initial Setup Screen menu, the screen below is displayed. This sample screen contains the manufacturer's default values for the PCM-9577 Series.

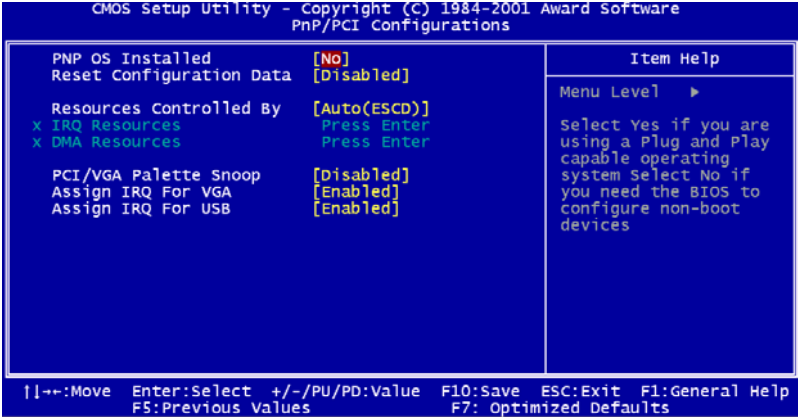


Figure 4.7: PnP/PCI Configurations

4.2.8 PC Health Status

The PC Health Status option displays information such as CPU and motherboard temperatures, fan speeds, and core voltage.



Figure 4.8: PC Health Status

4.2.9 Frequency/Voltage Control

By choosing the Frequency/Voltage Control option from the Initial Setup Screen menu, the screen below is displayed. This sample screen contains the manufacturer's default values for the PCM-9577

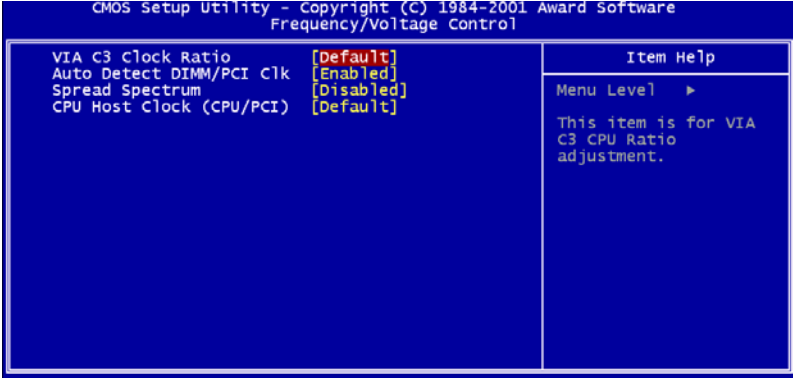


Figure 4.9: Frequency/Voltage Control

Caution *Incorrect settings in Frequency/Voltage Control may damage the system CPU, video adapter, or other hardware.*

4.2.10 Load Optimized Defaults

Load Optimized Defaults loads the default system values directly from ROM. If the stored record created by the Setup program should ever become corrupted (and therefore unusable), these defaults will load automatically when you turn the PCM-9577 Series system on.

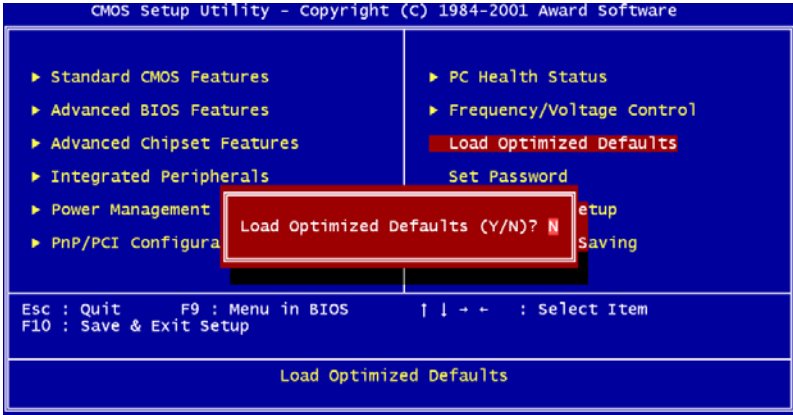


Figure 4.10: Load BIOS defaults screen

4.2.11 Set Password

Note *To enable this feature, you should first go to the Advanced BIOS Features menu, choose the Security Option, and select either Setup or System, depending on which aspect you want password protected. Setup requires a password only to enter Setup. System requires the password either to enter Setup or to boot the system.*

A password may be at most 8 characters long.

To Establish Password

1. Choose the Set Password option from the CMOS Setup Utility main menu and press <Enter>.
2. When you see “Enter Password,” enter the desired password and press <Enter>.

3. At the “Confirm Password” prompt, retype the desired password, then press <Enter>.
4. Select Save to CMOS and EXIT, type <Y>, then <Enter>.

To Change Password

1. Choose the Set Password option from the CMOS Setup Utility main menu and press <Enter>.
2. When you see “Enter Password,” enter the existing password and press <Enter>.
3. You will see “Confirm Password.” Type it again, and press <Enter>.
4. Select Set Password again, and at the “Enter Password” prompt, enter the new password and press <Enter>.
5. At the “Confirm Password” prompt, retype the new password, and press <Enter>.
6. Select Save to CMOS and EXIT, type <Y>, then <Enter>.

To Disable Password

1. Choose the Set Password option from the CMOS Setup Utility main menu and press <Enter>.
2. When you see “Enter Password,” enter the existing password and press <Enter>.
3. You will see “Confirm Password.” Type it again, and press <Enter>.
4. Select Set Password again, and at the “Enter Password” prompt, don’t enter anything; just press <Enter>.
5. At the “Confirm Password” prompt, again don’t type in anything; just press <Enter>.
6. Select Save to CMOS and EXIT, type <Y>, then <Enter>.

4.2.12 Save & Exit Setup

If you select this option and press <Y> then <Enter>, the values entered in the setup utilities will be recorded in the chipset’s CMOS memory. The microprocessor will check this every time you turn your system on and use the settings to configure the system. This record is required for the system to operate.

4.2.13 Exit Without Saving

Selecting this option and pressing <Enter> lets you exit the Setup program without recording any new values or changing old ones.

PCI SVGA Setup

Introduction

Installation of SVGA drivers

-for Windows 95/98/Me

-for Windows NT/2000/XP

Further information

Chapter 5 PCI SVGA Setup

5.1 Introduction

The PCM-9577 has an onboard AGP flat panel/VGA interface. The specifications and features are described as follows:

5.1.1 Chipset

The PCM-9577 uses a VIA Twister 8606T chipset from VIA Technology Inc. for its AGP/SVGA controller. It supports many popular LCD, and LVDS LCD displays and conventional analog CRT monitors. The VIA8606T VGA BIOS supports color TFT and DSTN LCD flat panel displays. In addition, it also supports interlaced and non-interlaced analog monitors (color and monochrome VGA) in high-resolution modes while maintaining complete IBM VGA compatibility. Digital monitors (i.e. MDA, CGA, and EGA) are NOT supported. Multiple frequency (multisync) monitors are handled as if they were analog monitors.

5.1.2 Display memory

The Twister chip can support 8/16/32MB frame buffer shared with system memory; the VGA controller can drive CRT displays or color panel displays with resolutions up to 1280 x 1024 at 16 M colors.

5.1.3 Display types

CRT and panel displays can be used simultaneously. The PCM-9577 can be set in one of three configurations: on a CRT, on a flat panel display, or on both simultaneously. The system is initially set to simultaneous display mode. If you want to enable the CRT display only or the flat panel display only, please contact VIA Technology Inc., or our sales representative for detailed information.

5.1.4 Dual/Simultaneous Display

The PCM-9577 uses a VIA Twister VT8606T LCD controller that is capable of providing simultaneous dual view display of the same content on a flat panel and CRT.

To set up dual view (simultaneous mode) under Windows 9x, Windows ME, Windows NT/2000/XP, follow these steps:

- Step 1. Open the Control panel, and select “Display”, “Settings”.
- Step 2. Select " CRT+LCD " or " CRT+TV " for dual view
- Step 3. Click “OK”.

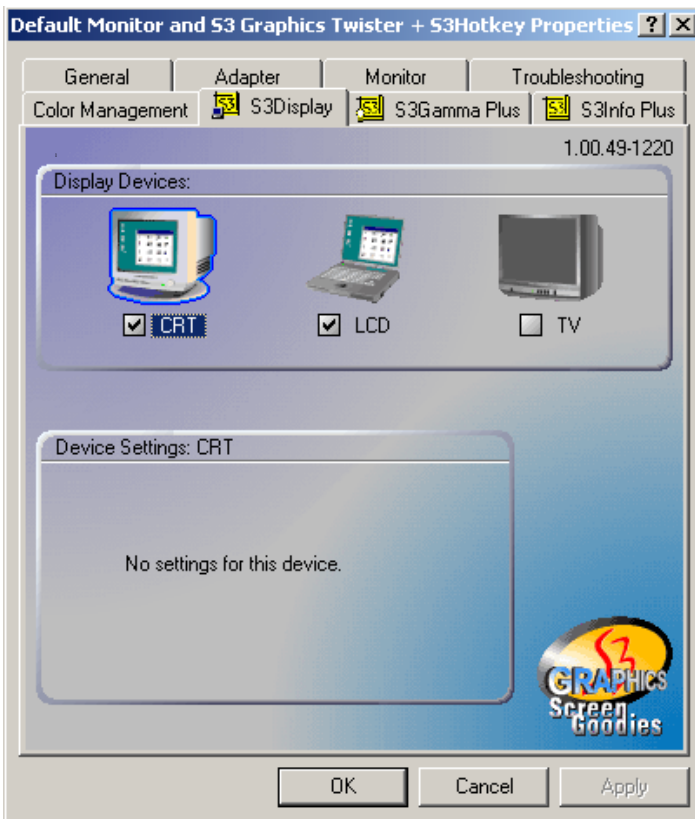


Figure 5.1: Selecting Display Settings

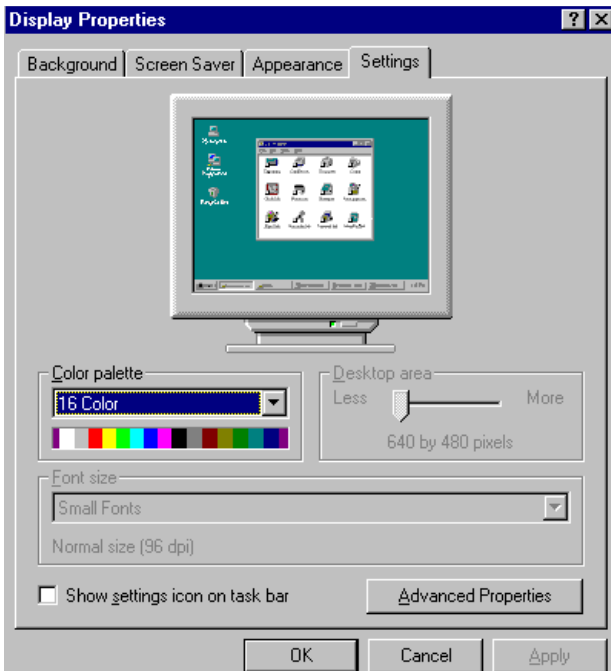
5.2 Installation of the SVGA Driver

Complete the following steps to install the SVGA driver. Follow the procedures in the flow chart that apply to the operating system that you are using within your PCM-9577.

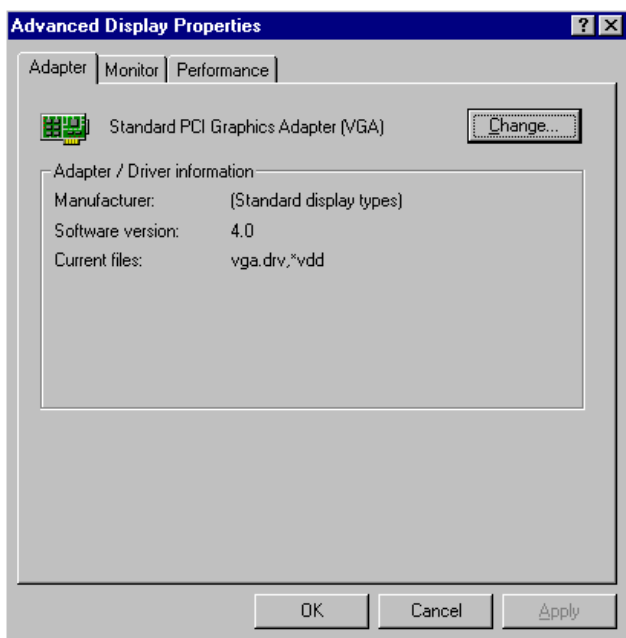
- Notes:**
1. *The windows illustrations in this chapter are intended as examples only. Please follow the listed steps, and pay attention to the instructions which appear on your screen.*
 2. *For convenience, the CD-ROM drive is designated as "D" throughout this chapter.*

5.2.1 Installation for Windows 95

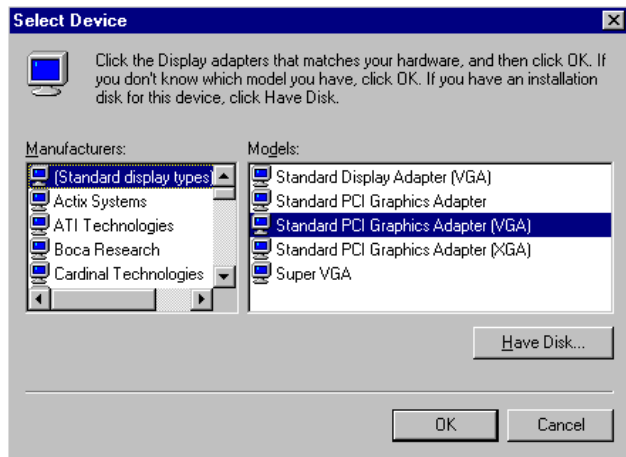
1. Select "Start", "Settings", "Control Panel", "Display", "Settings", and "Advanced Properties".



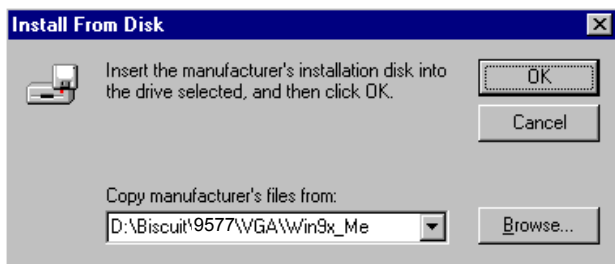
2. Choose the "Adapter" tab, then press the "Change..." button.



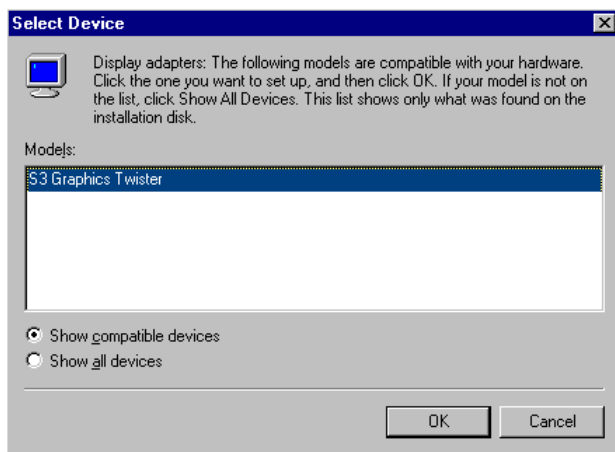
3. Press the "Have Disk" button.



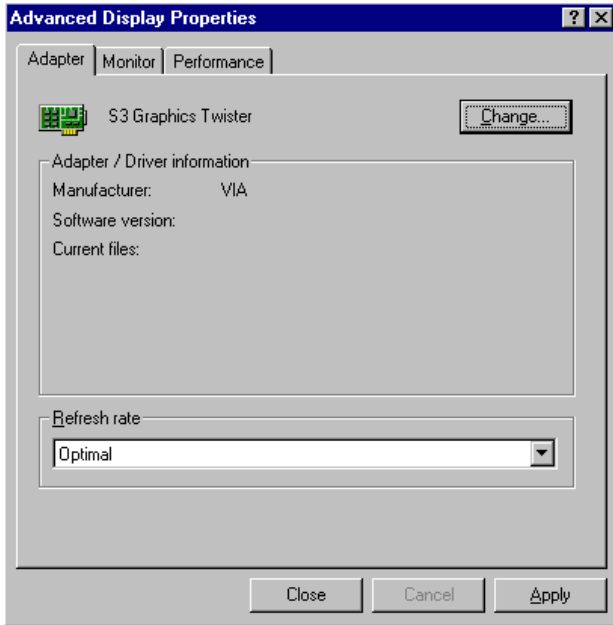
4. Type in the path:
D:\Biscuit\9577\VGA\Win9x_Me



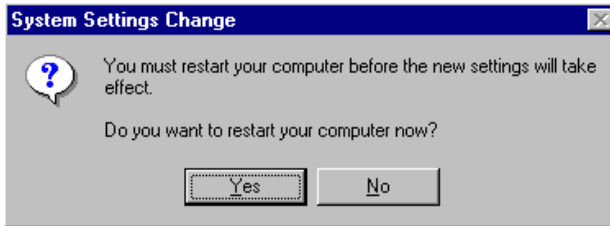
5. Select the highlighted item, and click the "OK" button.



6. "S3 GraphicsTwister" appears under the adapter tab. Click the "Apply" button, then the "OK" button.

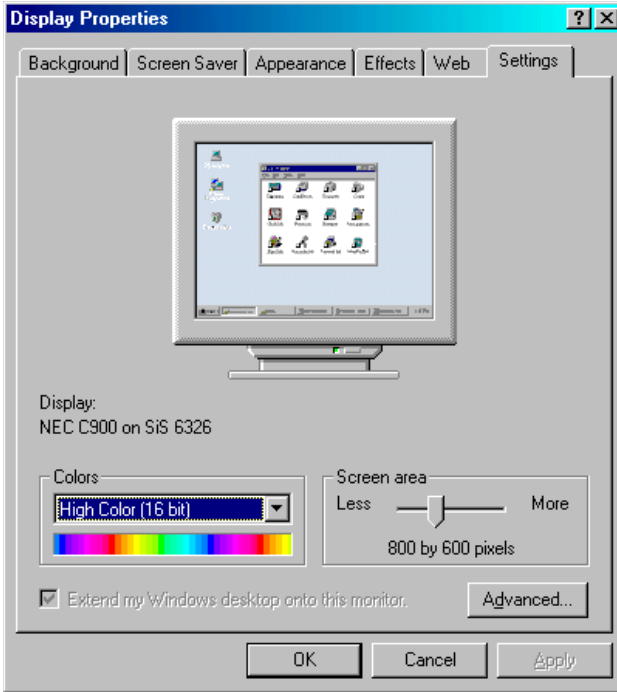


7. Press "Yes" to reboot.

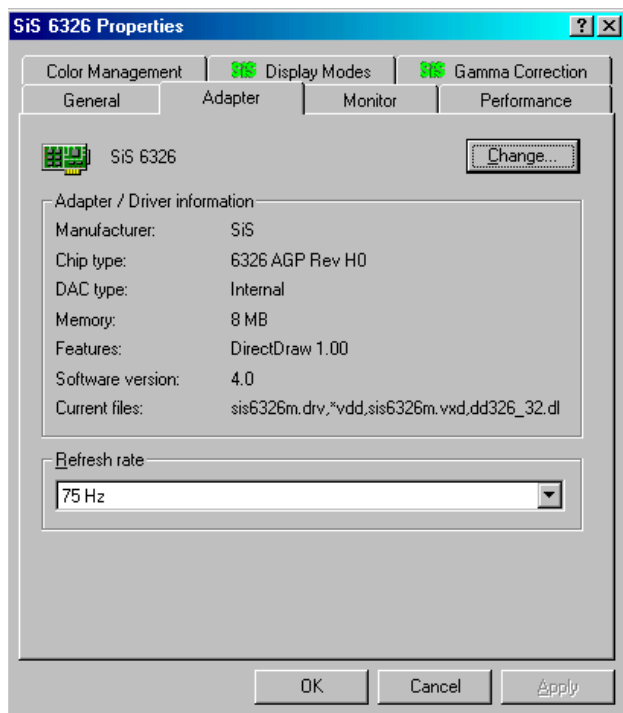


5.2.2 Installation for Windows 98/Me

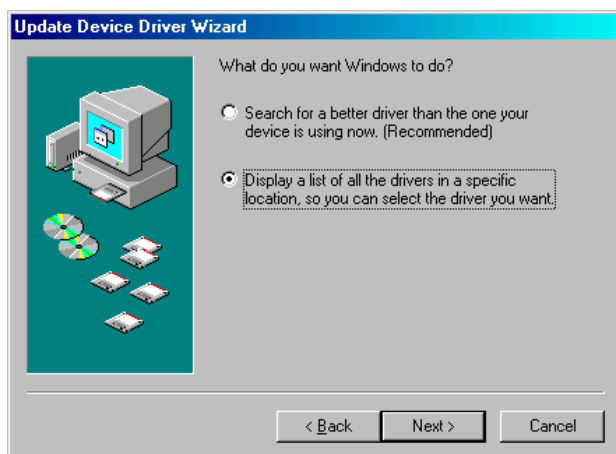
1. Select "Start", "Settings", "Control Panel", "Display", and "Settings," then press the "Advanced..." button.



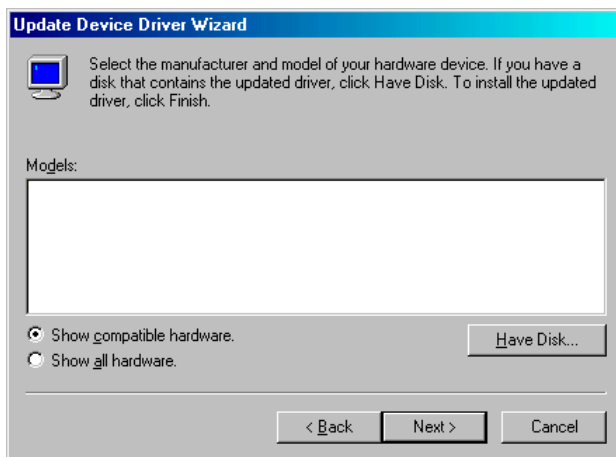
2. Select “Adapter,” then “Change.”



3. Press “Next,” then “Display a list....”



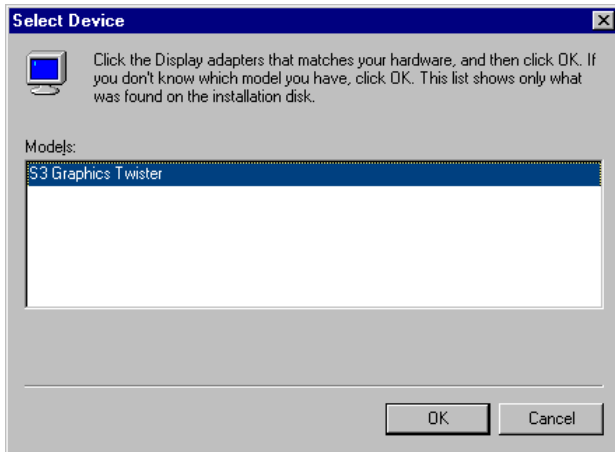
4. Press the “Have disk...” button.



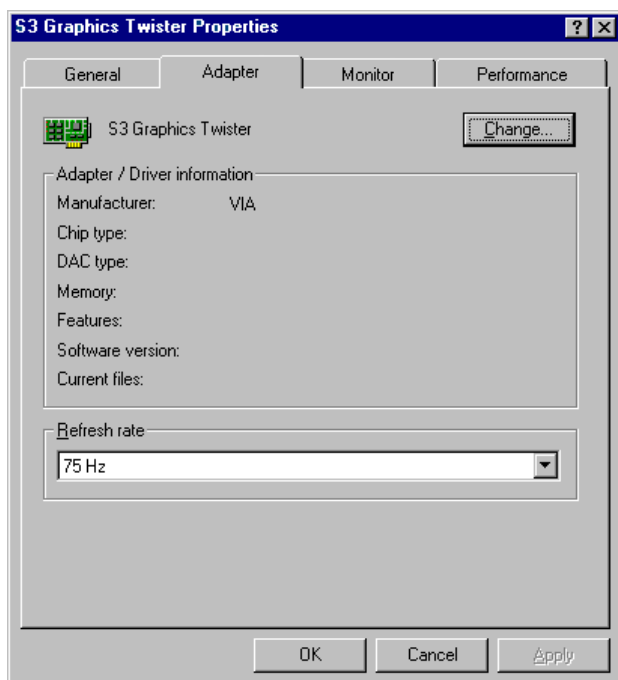
5. Insert the CD into the CD-ROM drive. Type in the path **D:\Biscuit\9577\VGA\Win9x_Me**
Then press “OK”



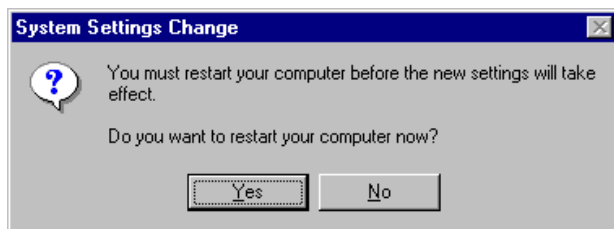
6. Select the highlighted item, then click “OK.”



7. "S3 Graphics Twister" appears under the adapter tab. Click the "Apply" button.



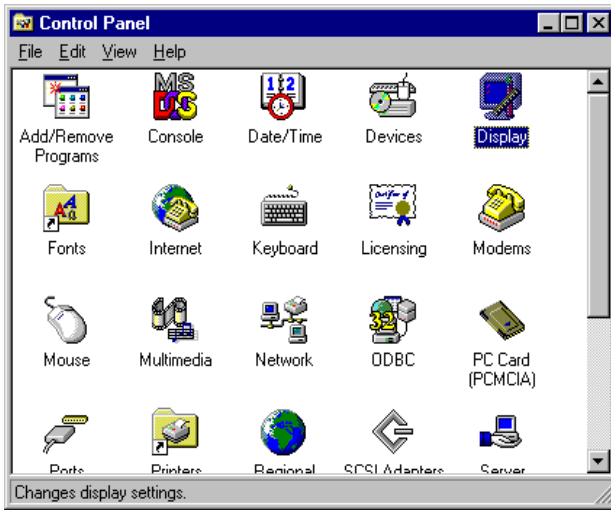
8. Press "Yes" to reboot.



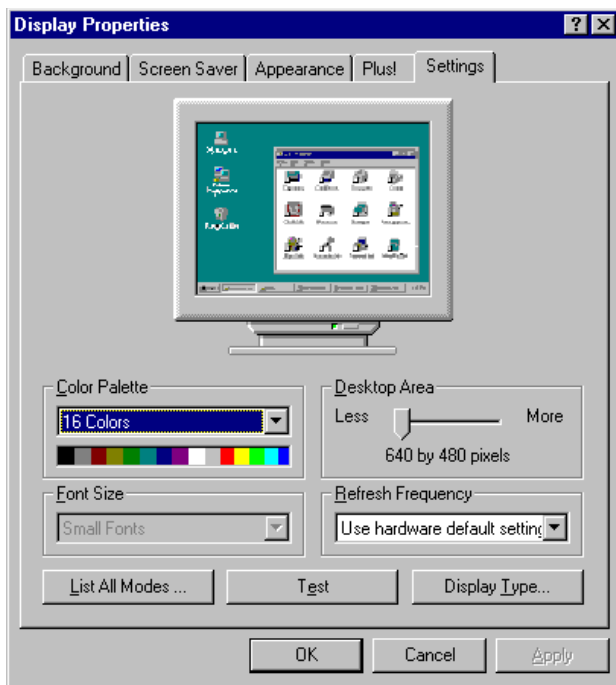
5.2.3 Installation for Windows NT

Note: Service Pack X (X = 3, 4, 5, 6,...) must be installed first, before you install the Windows NT VGA driver.

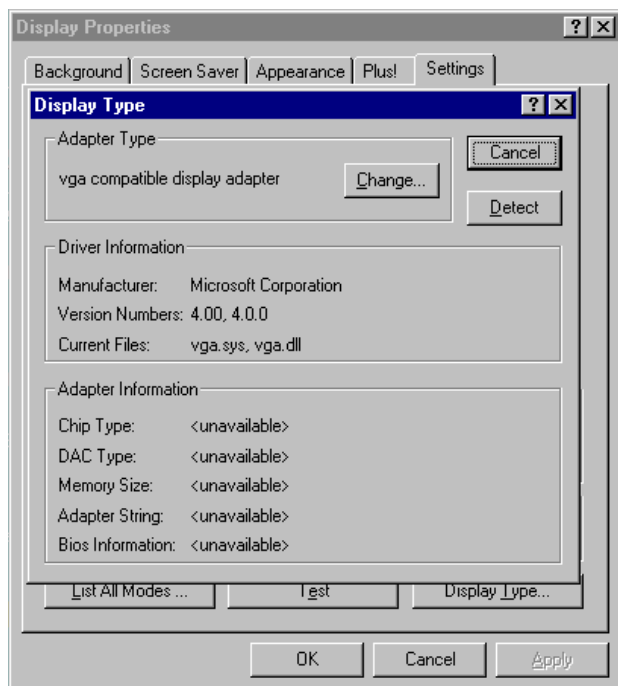
1. Select "Start", "Settings", "Control Panel" and double click the "Display" icon.



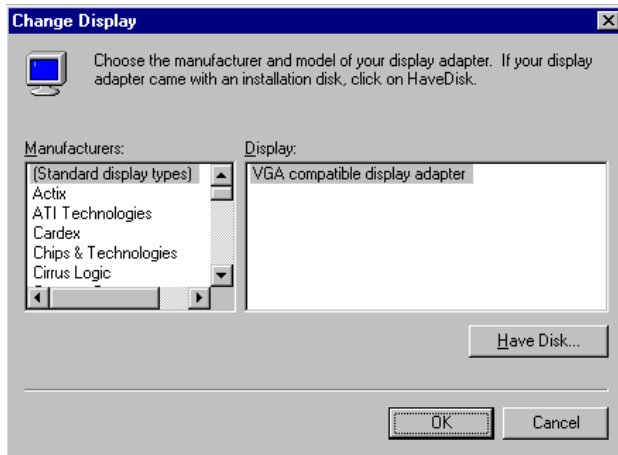
2. Choose the "Settings" tab, and press the "Display Type" button.



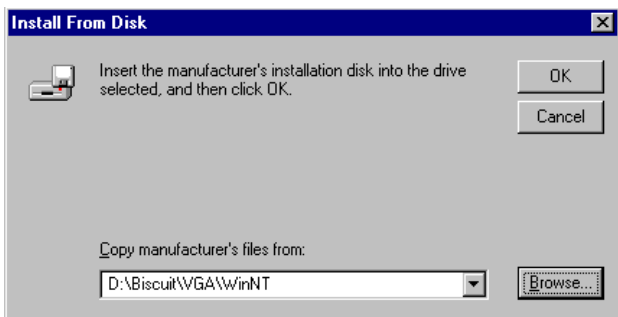
3. Press the "Change..." button.



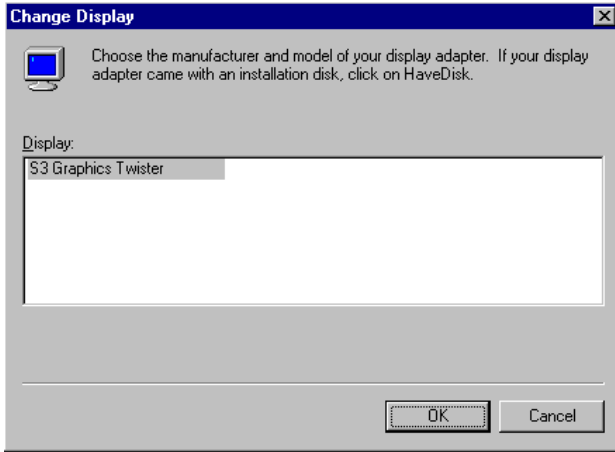
4. Click the "Have Disk..." button.



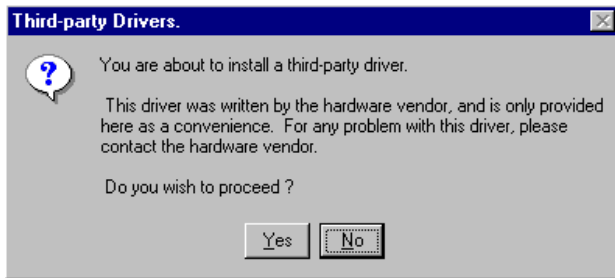
5. Type the path:
D:\Biscuit\VGA\WinNT
Press the "OK" button.



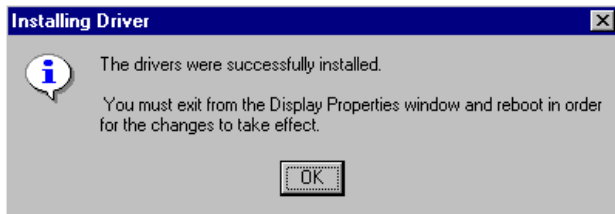
6. Select the highlighted item, and click the "OK" button.



7. Press "Yes" to proceed.

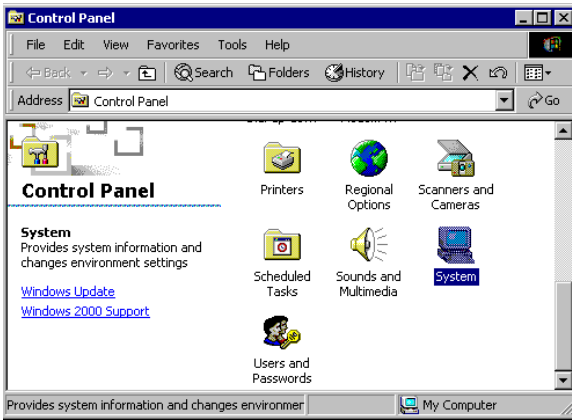


8. Press "OK" to reboot.



5.2.4 Installation for Windows 2000

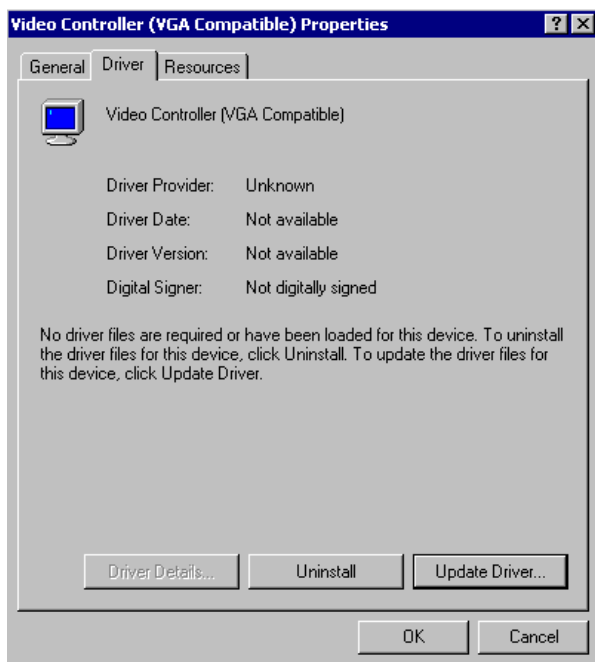
1. Select "System", "Settings", "Control Panel" and double click the "system" icon.



2. Choose the "Video Controller (VGA Compatible)" button.



3. Choose the "Driver" button, press "Update Driver..." button.



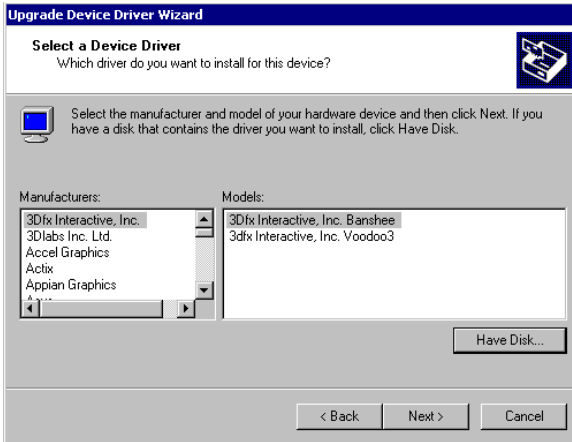
4. Choose "Display a list of..." , then press "Next" button.



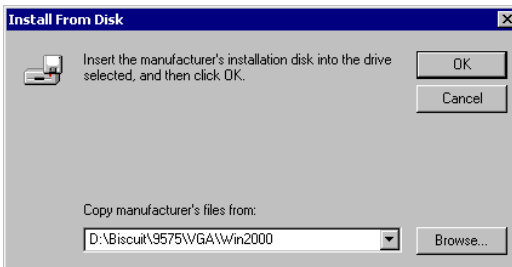
5. Choose "Display adapters", press "Next" button.



- Click the “Have Disk” button.



- Type the path `D:\Biscuit\9577\VGA\Win2000` press the “OK” button.

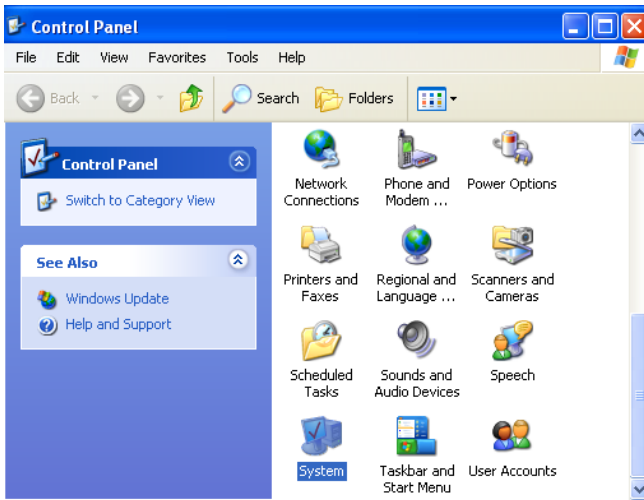


8. Press "Finish" to reboot.

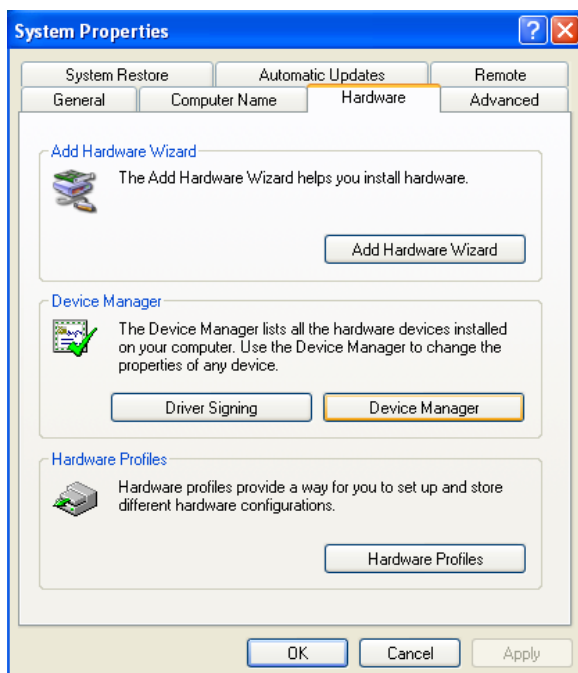


5.2.5 Installation for Windows XP

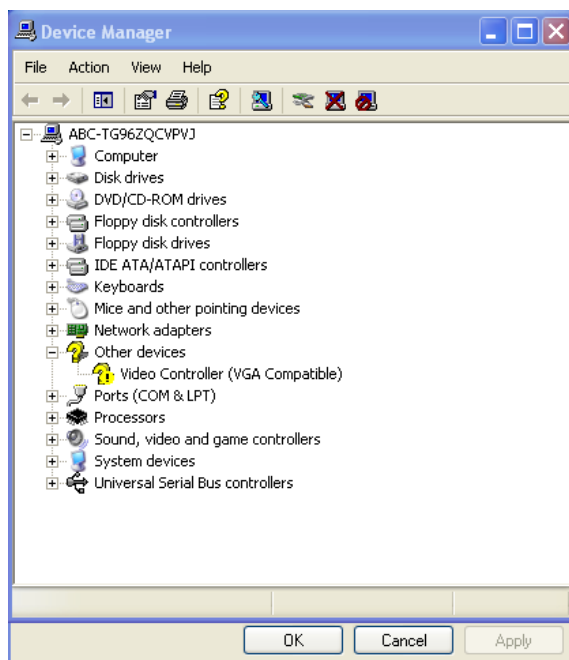
1. Select "System", "Settings", "Control Panel" and double click the "system" icon.



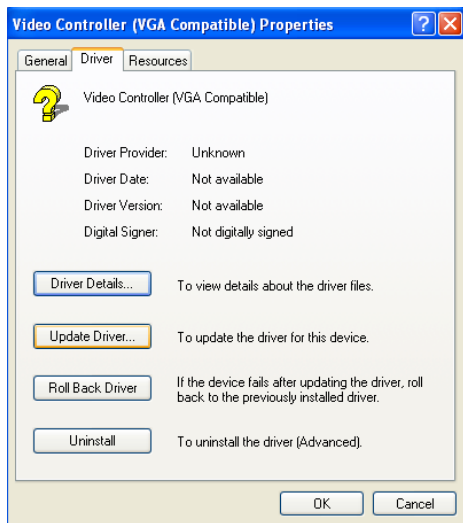
2. Choose “Hardware” and “Device Manager”, press “OK” button.



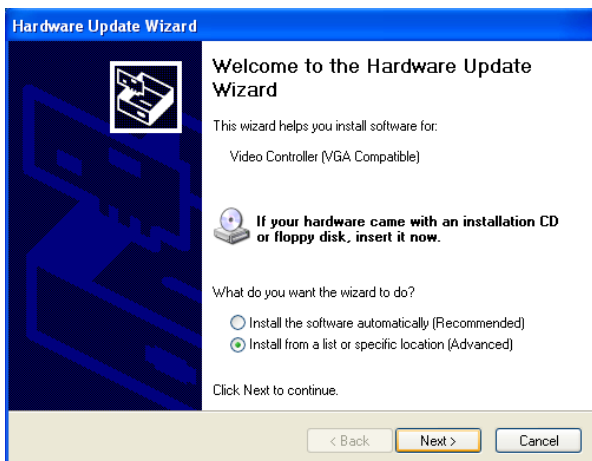
3. Choose “Video Controller (VGA Compatible), press “OK” button.



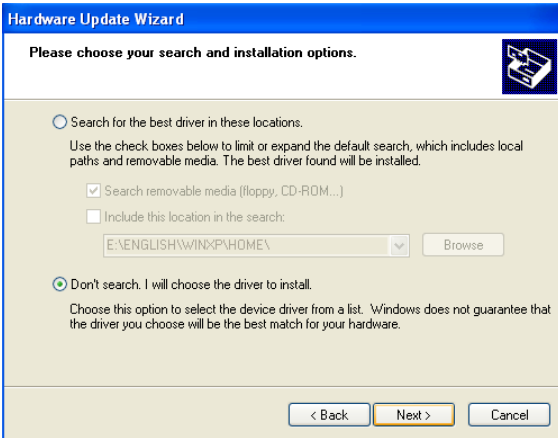
4. Choose "Driver", "Update Driver", press "OK" button.



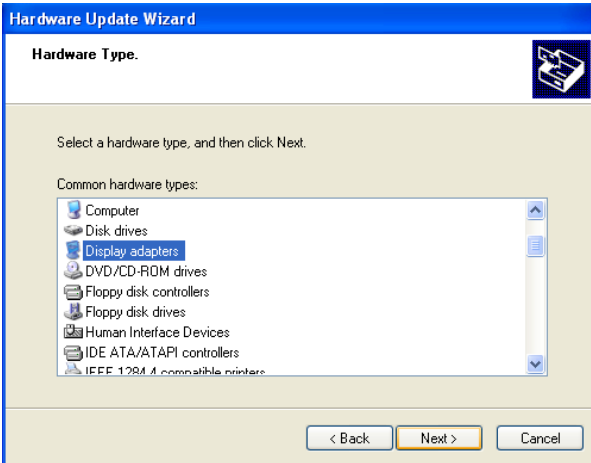
5. Choose "Install from a list.....", press "Next".



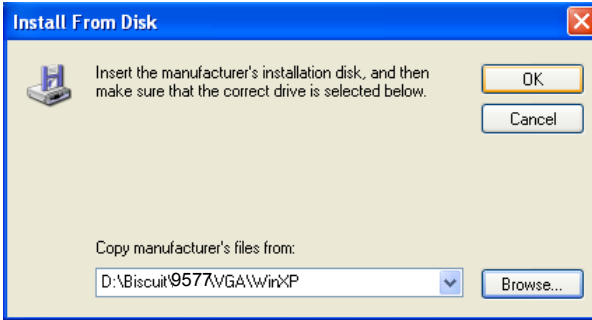
6. Choose “Don’t search. I will....”, press “Next” button.



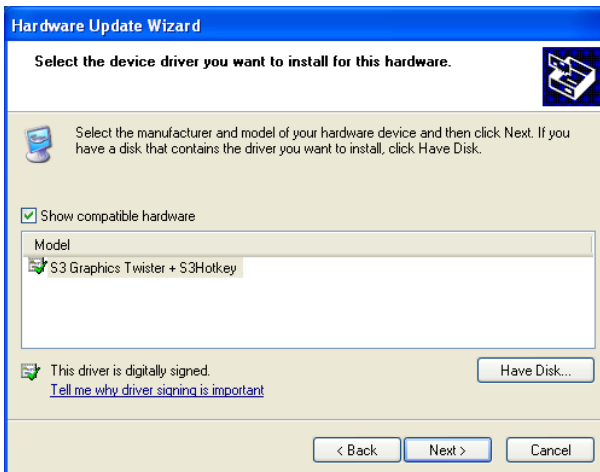
7. Choose “Display adapters”, press “Next” button.



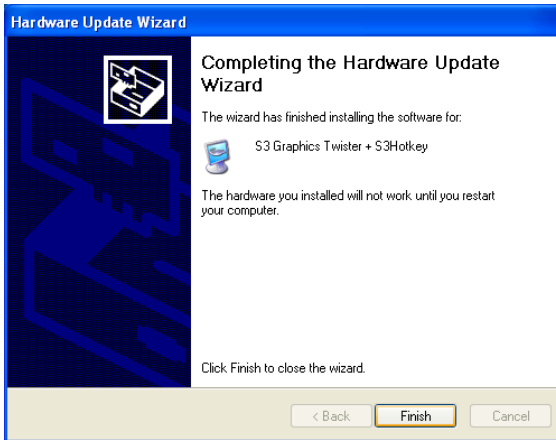
8. Type the path D:\Biscuit\9577\VGA\WinXP then press “OK” button.



9. Choose “S3 Graphics Twister + S3 Hotkey” then press “Next” button.



10. Press "Finish" to reboot.



5.3 Further Information

For further information about the AGP/VGA installation in your PCM-9577, including driver updates, troubleshooting guides and FAQ lists, visit the following web resources:

VIA website: www.via.com.tw

Advantech websites: www.advantech.com
www.advantech.com.tw

Audio Setup

The PCM-9577 is equipped with an audio interface that records and plays back CD-quality audio. This chapter provides instructions for installing the software drivers included on the audio driver diskettes.

Chapter 6 Audio Setup

6.1 Introduction

The PCM-9577's on-board audio interface provides high-quality stereo sound and FM music synthesis (ESFM) by using the VIA VT82C686 audio controller from VIA. The audio interface can record, compress, and play back voice, sound, and music with built-in mixer control.

The PCM-9577 on board audio interface also supports the Plug and Play (PnP) standard and provides PnP configuration for the audio, FM, and MPU-104 logical devices. It is compatible with Sound Blaster™; Sound Blaster Pro™ version 3.01, voice and music functions. The ESFM synthesizer is register compatible with the OPL3 and has extended capabilities.

6.2 DOS utilities

6.2.1 VIA Sound Blaster Pro compatible set up program

Please "Enable" the Sound Blaster setting in the BIOS before playing Sound Blaster compatible DOS games. To enable the settings in the BIOS:

INTEGRATED PERIPHERALS -> Onboard Legacy Audio
-> Sound Blaster (Disable -> Enable)

Chipset Feature Setup ->On Chip Sound (Disable-> Enable)

The Sound Blaster Pro compatible sound chip is integrated into the VIA PCI audio device in order to have Sound Blaster compatible DOS games running on the system.

If you want to play Sound Blaster compatible DOS games under the real mode MS-DOS or the "Restart in MS-DOS" from Win9x, then you should run this setup program to enable OPL3 MIDI music. Otherwise, the sound effects will be heard, but not the music. If you want to play legacy games in a Windows DOS Box, then you don't need to install this program.

6.2.2 VIA Sound Blaster Installation

Follow these steps to enable the Sound Blaster Pro compatible functions.

Step 1. Enable the Sound Blaster first on the BIOS setting of the "Onboard Legacy Audio" and "On-Chip Sound".

Step 2. Run the "Install.exe".

```
A:> INSTALL
```

Step 3. The program will copy the relative files into the directory which you assign. Next, the program will insert the following new line into the AUTOEXEC.BAT and copy the original AUTOEXEC.BAT to AUTOEXEC.VIA.

```
C: \VIAUDIO\VIAUDIO.COM
```

Step 4. Reboot the system when the installation is complete.

Step 5. Uninstall by deleting the new line from the AUTOEXEC.BAT.

6.3 Driver installation

6.3.1 Before you begin

Please read the instructions in this chapter carefully before you attempt installation. The audio drivers for the PCM-9577 board are located on the audio driver CD. Run the supplied SETUP program to install the drivers; don't copy the files manually.

Note: The files on the software installation diskette are compressed. Do not attempt to install the drivers by copying the files manually. You must use the supplied SETUP program to install the drivers.

6.3.2 Windows 95/98 drivers

1. Click "Start" and select "Settings". Click "Control Panel" and double-click "Add New Hardware".



2. In the Add New Hardware Wizard window, click "Next".



3. In the following Add New Hardware Wizard window, click "Next" for Windows to search for Plug and Play devices.



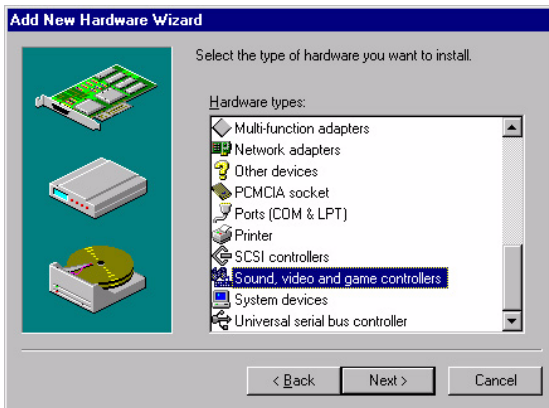
4. In the following Add New Hardware Wizard window, select "No, the device isn't in the list." and click "Next".



5. In the following Add New Hardware Wizard window, select "No, I want to select..." and click "Next".



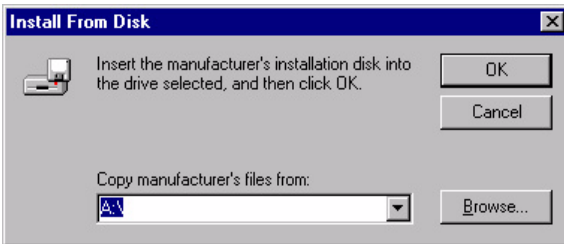
6. In the following Add New Hardware Wizard window, select "Sound, video and game controllers" and click "Next".



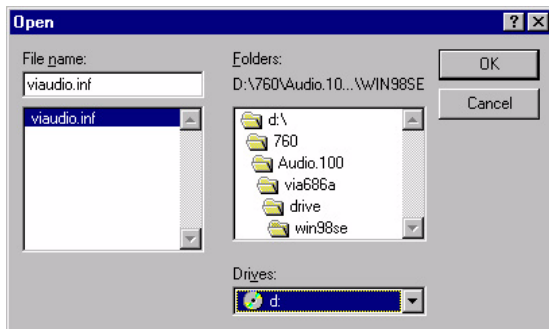
7. In the following Add New Hardware Wizard window, click "Have Disk...".



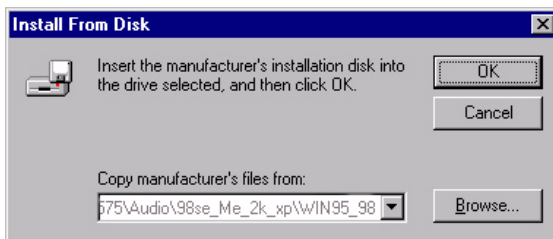
8. In the Install From Disk window, click "Browse".



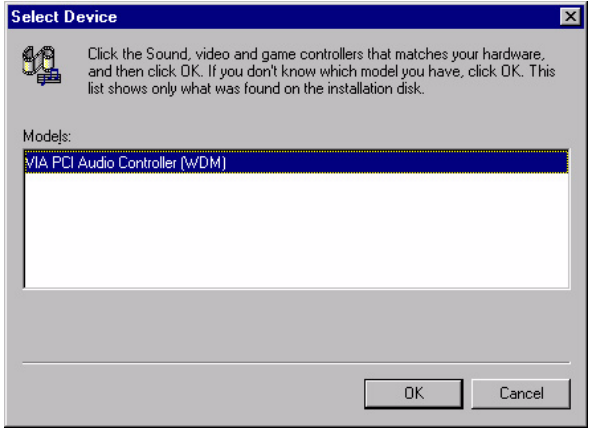
9. In the Open window, select "D:\Biscuit\9577\Audio\98se_Me_2k_xp\WIN95_98.



10. In the Install From Disk window, click "OK".



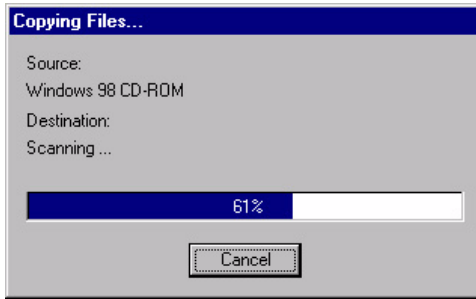
11. In the Select Device window, select "VIA PCI Audio Controller (WDM)" and click "OK".



12. In the Add New Hardware Wizard window, click "Next".



13. The Copying Files... window will appear.



14. In the Add New Hardware Wizard window, click "Finish". Then reboot the system.

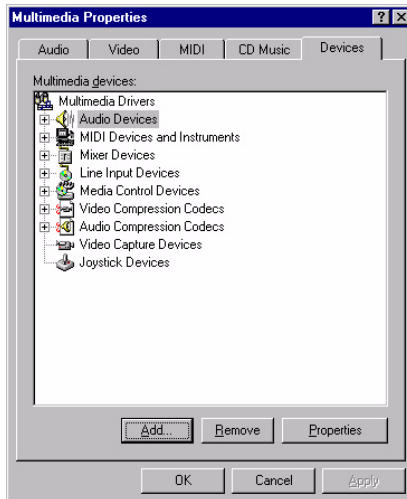


6.3.3 Windows NT drivers

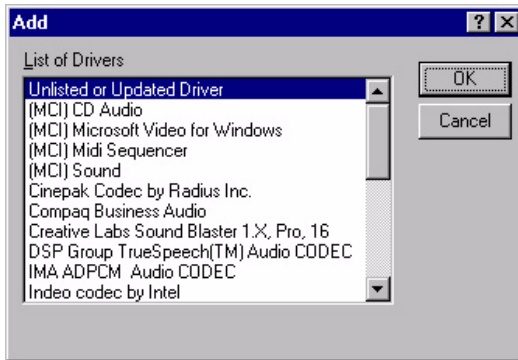
1. Click "Start" and select "Settings". Click "Control Panel" and double-click "Multimedia".



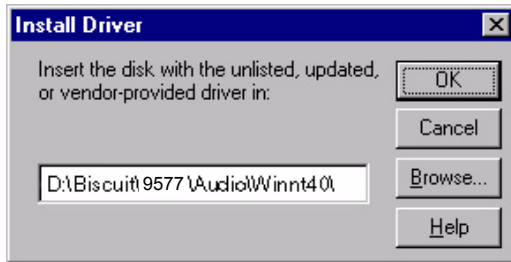
2. In the Multimedia Properties window, select the "Devices" tab. Then select the "Audio Devices" item, and click "Add...".



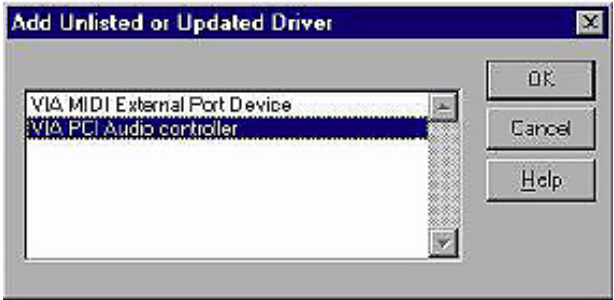
3. In the Add window, select the "Unlisted..." item and click "OK".



4. When the Install Driver window appears, insert the utility disc into the CD-ROM drive. Type: D:\Biscuit\9577\Audio\WinNT\ Then click "OK".



- In the Add Unlisted or Updated Driver window, select the "VIA PCI Audio controller" item. Then click "OK".

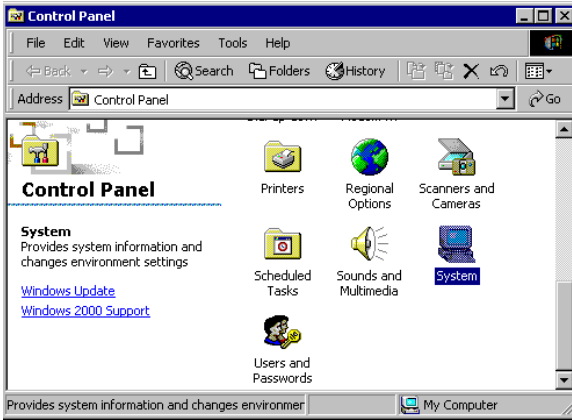


- In the System Setting Change window, click "Restart Now".

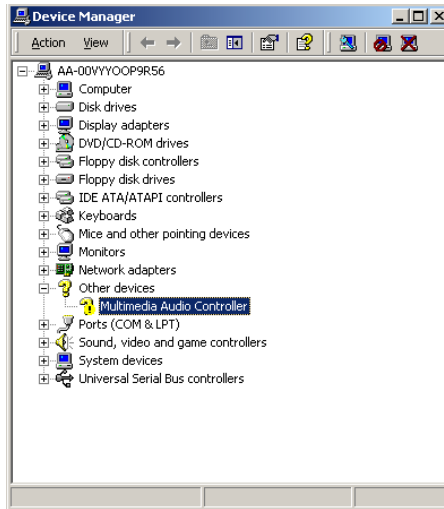


6.3.4 Windows 2000 Drivers

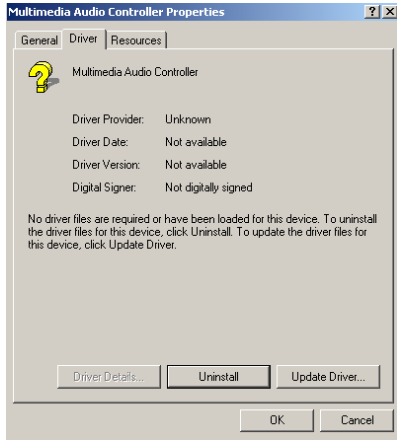
1. Select “System”, “Setting”, “Control Panel” and double click “system” icon.



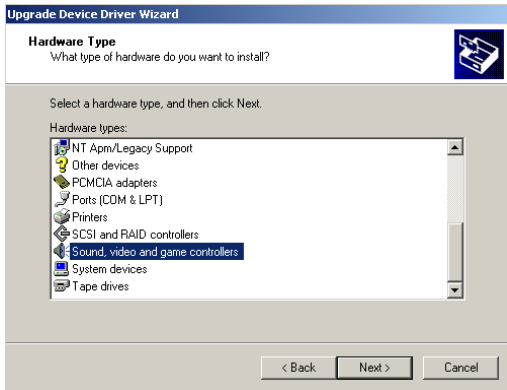
2. Choose “Multimedia Audio Controller” button.



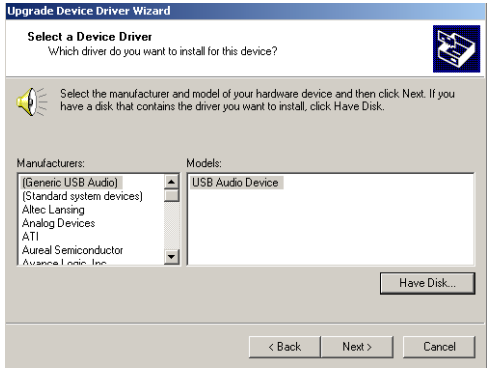
3. Choose “Driver button, press “Update Driver” button.



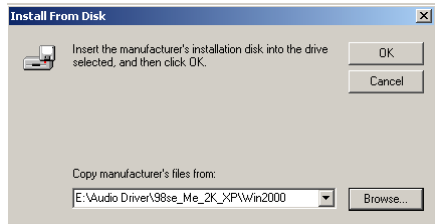
4. Choose “Sound, video and game controllers”, press “Next”



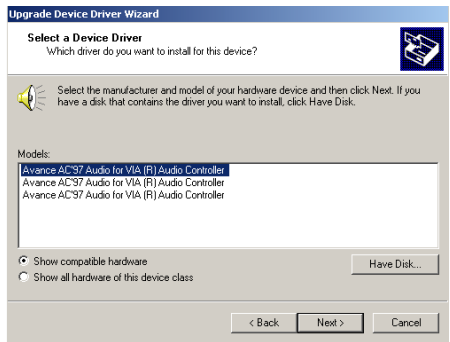
5. Click the “Have Disk...” button



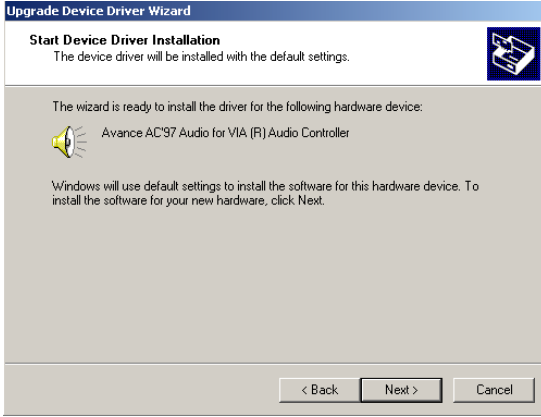
6. Type the path D:\Biscuit\9577\Audio\98se_Me_2k_xp\Win2000 press the “ok” button.



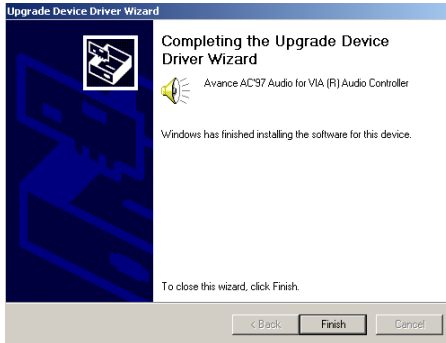
7. Click “Have Disk” button



8. Press “Next” button



9. Press “Finish” to reboot



PCI Bus Ethernet Inter- face

This chapter provides information on Ethernet configuration.

- Introduction
- Installation of Ethernet drivers for Windows 98/2000/NT
- Further information

Chapter 7 PCI Bus Ethernet Interface

7.1 Introduction

The PCM-9577 is equipped with a high performance 32-bit Ethernet chipset which is fully compliant with 802.3u 100BASE-T \Fast Ethernet CSMA/CD standards (PCM-9577F) and compliant IEEE 802.3z/ab 1000BAS-T Gigabit Ethernet(PCM-9577FG). It is supported by major network operating systems. It is also both 100Base-T and 10Base-T compatible.

The Ethernet port provides a standard RJ-45 jack via an optional wiring kit. The network boot feature can be utilized by incorporating the boot ROM image files for the appropriate network operating system. The boot ROM BIOS files are combined with system BIOS, which can be enabled/disabled in the BIOS setup.

7.2 Installation of Ethernet driver

Before installing the Ethernet driver, note the procedures below. You must know which operating system you are using in your PCM-9577 Series, and then refer to the corresponding installation flow chart. Then just follow the steps described in the flow chart. You will quickly and successfully complete the installation, even if you are not familiar with instructions for MS-DOS or Windows.

Note: *The windows illustrations in this chapter are examples only. Follow the steps and pay attention to the instructions which appear on your screen.*

7.2.1 Installation for MS-DOS and Windows 3.1

If you want to set up your Ethernet connection under the MS-DOS or Windows 3.1 environment, you should first check your server system model. For example, MS-NT, IBM-LAN server, and so on.

Then choose the correct driver to install in your biscuit PC.

The installation procedures for various servers can be found on the supplied CD-ROM, the correct path being:

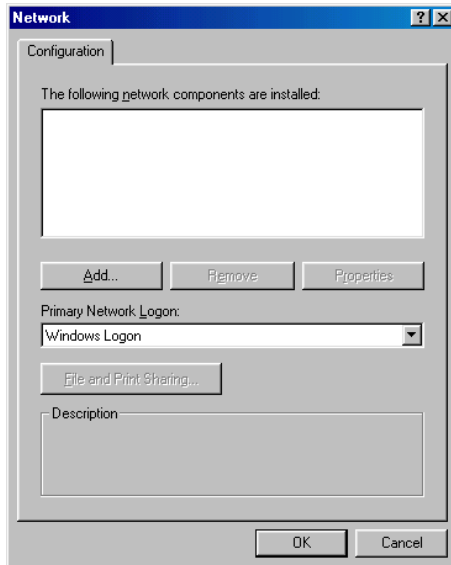
D:\Biscuit\9577\LAN\82559er\wfw311

7.2.2 Installation for Windows 98

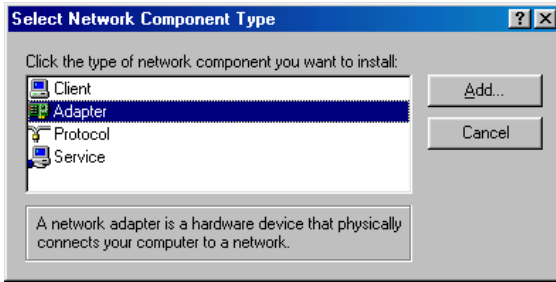
1. a. Select "Start", "Settings". "Control Panel".
b. Double click "Network".



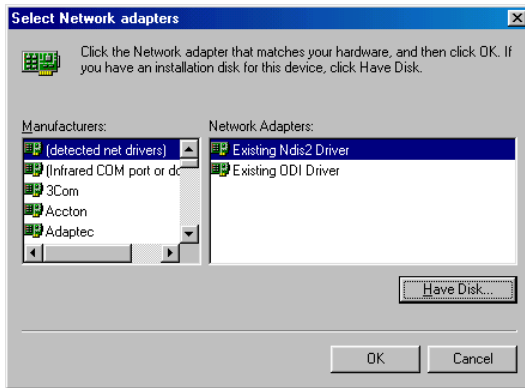
2. a. Click "Add" and prepare to install network functions.



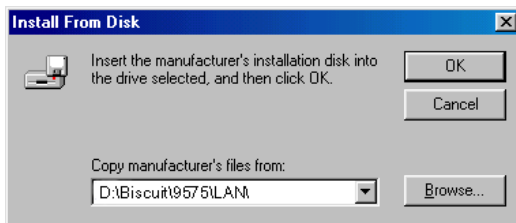
3. a. Select the "Adapter" item to add the Ethernet card.



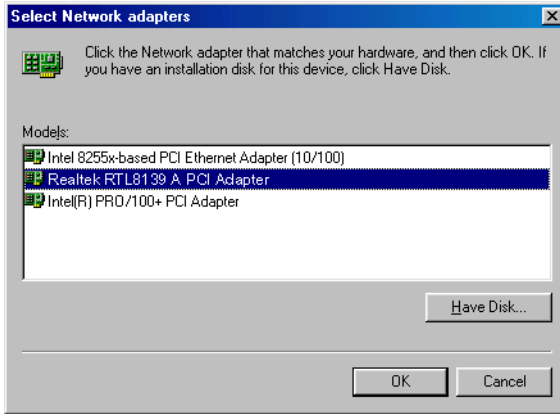
4. a. Click "Have Disk" to install the driver.



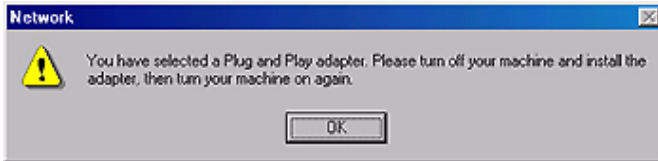
5. a. Insert the CD into the D: drive
b. Fill in "D:\Biscuit\9577\LAN"
c. Click "OK"



6.
 - a. Choose the " Intel 8255x based PCI Ethernet Adapter (10/100)"
 - b. Click "OK".

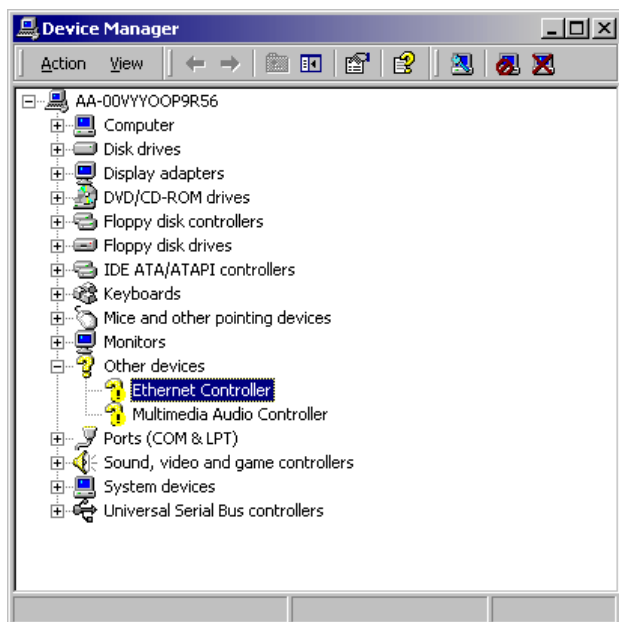


7.
 - a. Make sure the configurations of relative items are set correctly.
 - b. Click "OK" to reboot.

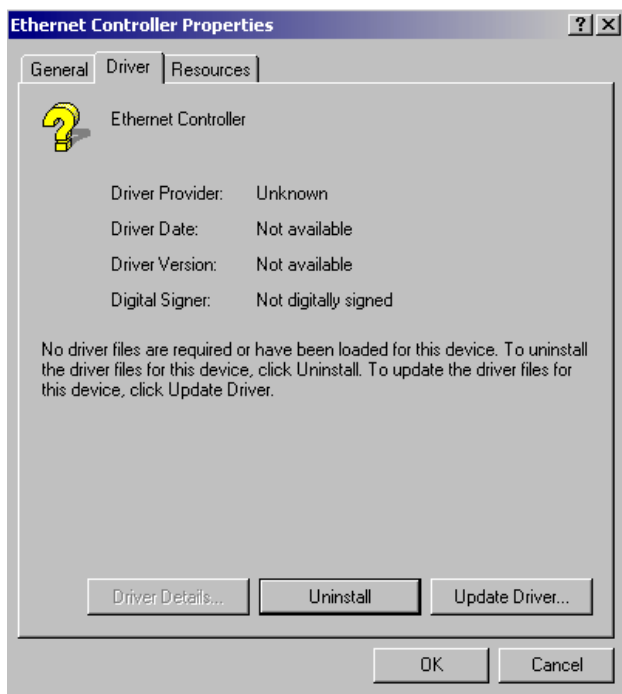


7.2.3 Installation for Windows 2000

1. Open Device Manager,



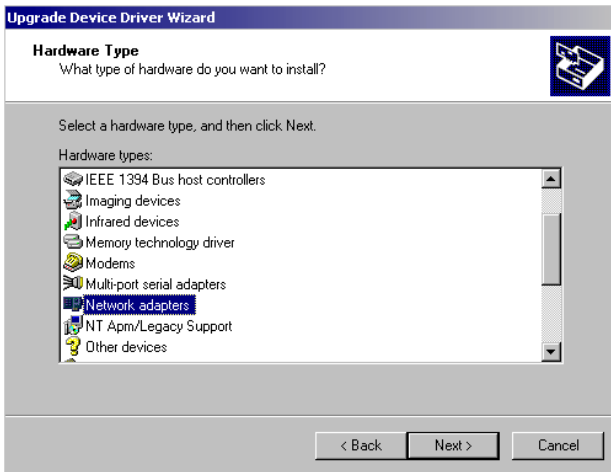
2.



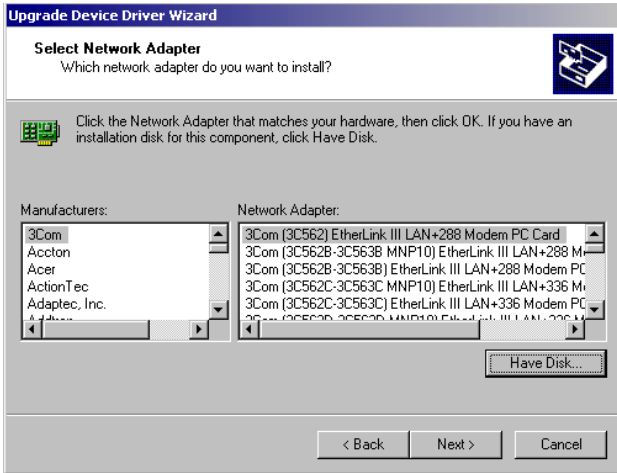
3.



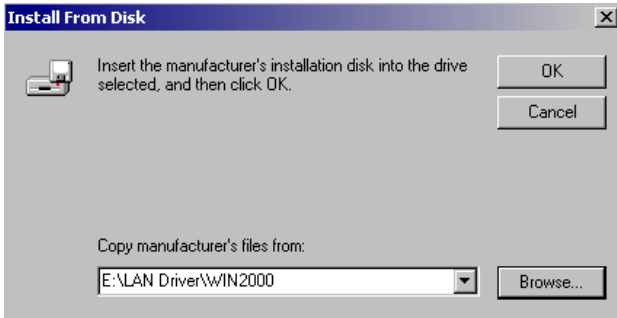
4.



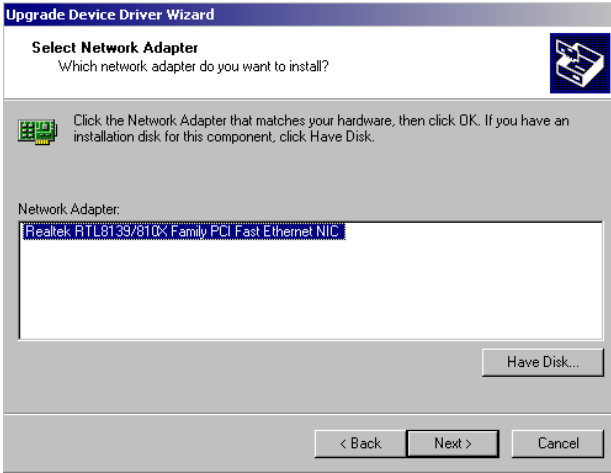
5.



6.



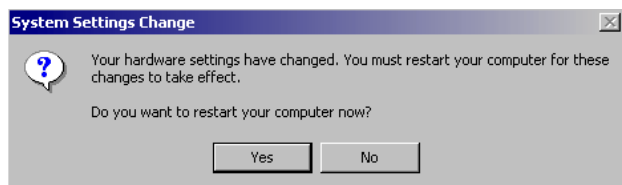
7.



8.

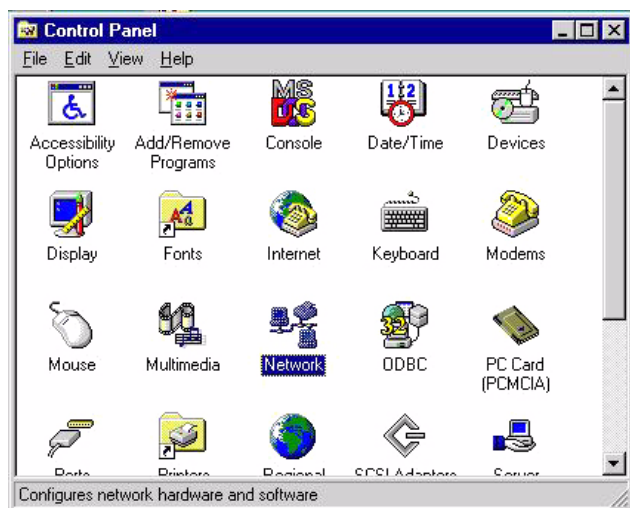


9.

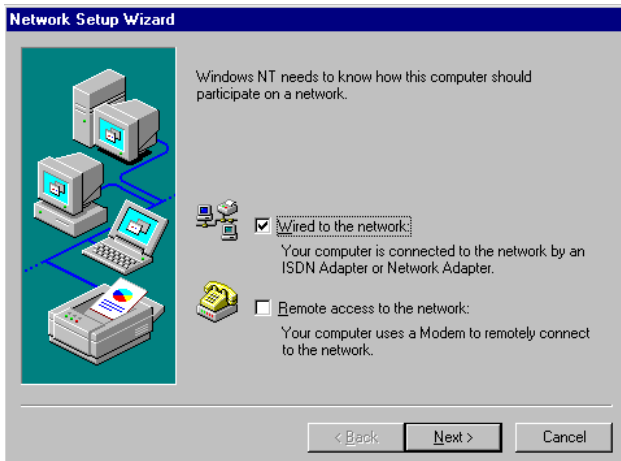


7.2.4 Installation for Windows NT

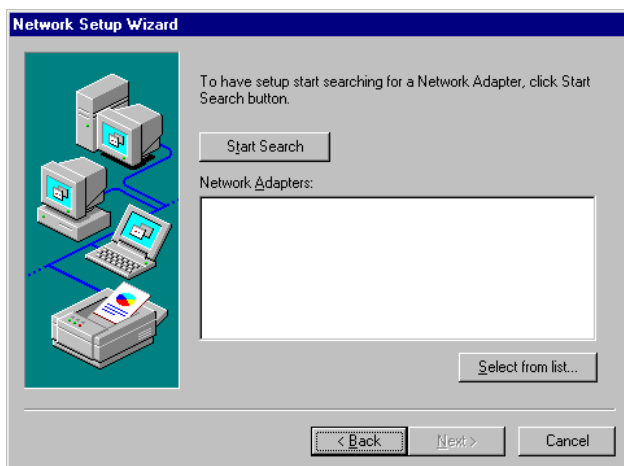
1. a. Select "Start", "Settings", "Control Panel"
- b. Double click "Network"



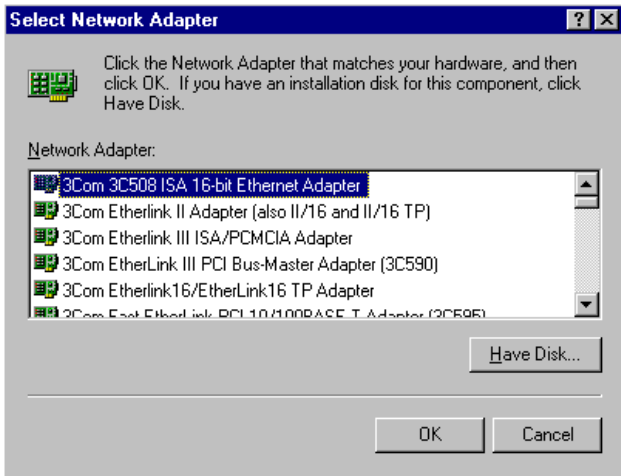
2. a. Choose type of network.
b. Click "Next"



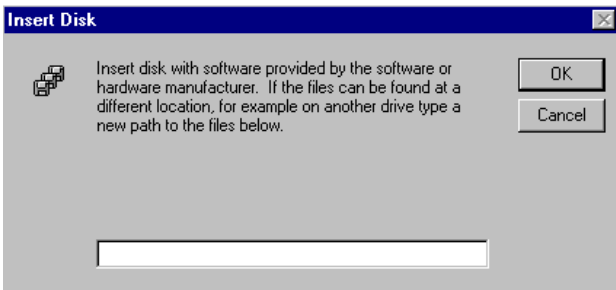
3. a. Click "Select from list..."



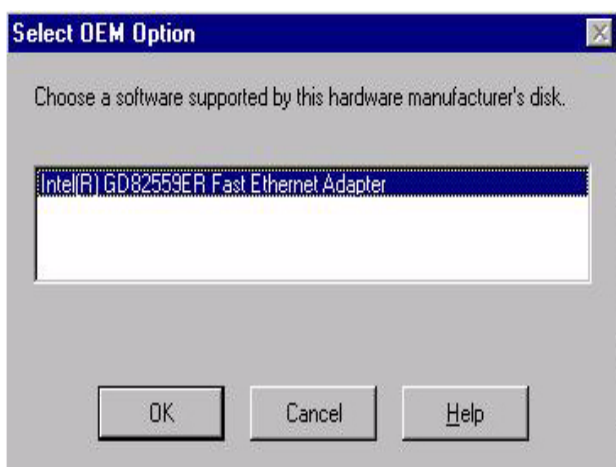
4. Click “Have Disk.”



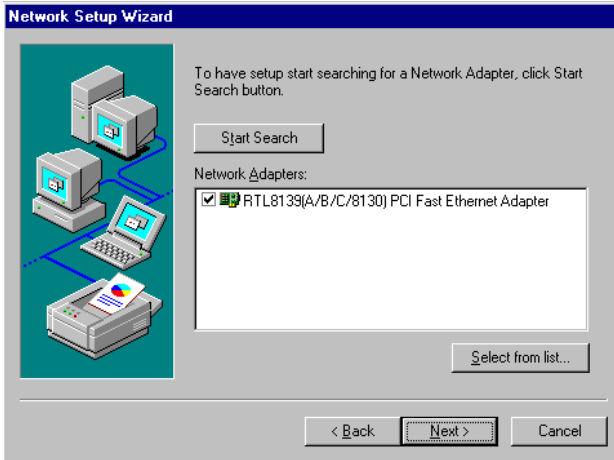
5. a. Insert the Utility CD ROM
b. Fill in the correct path: D:\Biscuit\9577\LAN\82559er\winnt4
c. Click "OK".



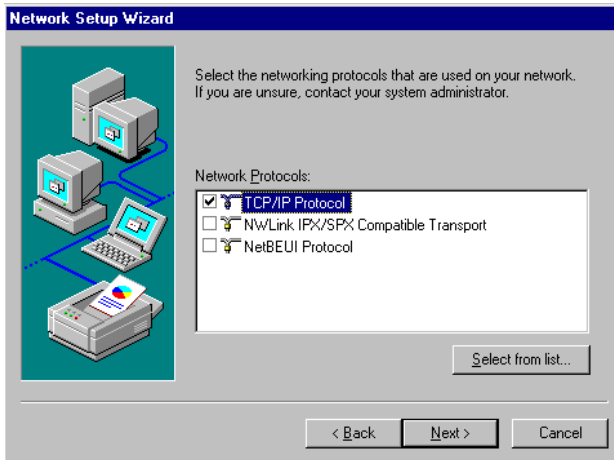
6. Check the highlighted item, and click “OK.”



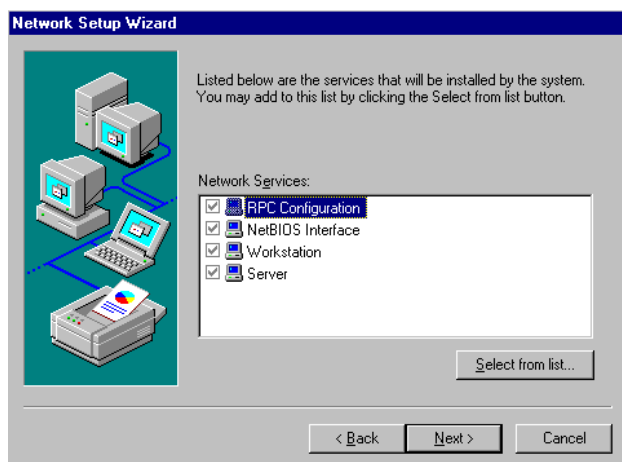
7. Click "Next" to continue setup.



8. Choose the networking protocols, then click "Next"



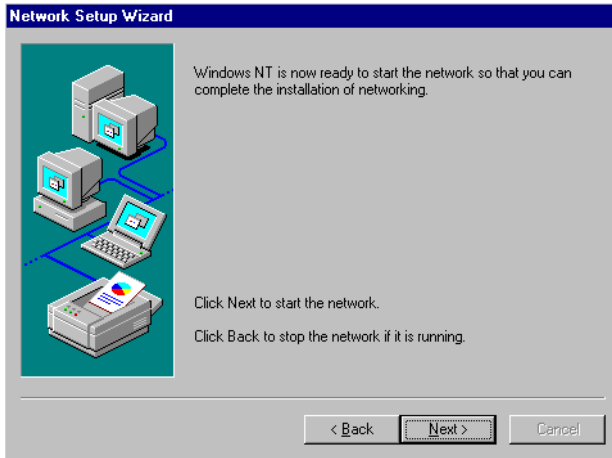
9. Select the correct Network Services then click "Next"



10. Click "Next" to continue setup.



11. Click “Next” to start the network.



7.3 Further information

Realtek website:	www.realtek.com.tw
Intel website:	www.intel.com
Advantech websites:	www.advantech.com www.advantech.com.tw

Programming the Watchdog Timer

The PCM-9577 is equipped with a watchdog timer that resets the CPU or generates an interrupt if processing comes to a standstill for any reason. This feature ensures system reliability in industrial standalone or unmanned environments.

Appendix A Programming the Watchdog Timer

A.1 Supported Input Timing Modes

In order to program the watchdog timer, you must write a program which writes I/O port address 443 (hex). The output data is a value of time interval. The value range is from 01 (hex) to 3E (hex), and the related time interval is 1 sec. to 62 sec.

Data	Time Interval
01	1 sec.
02	2 sec.
03	3 sec.
04	4 sec.
	.
	.
	.
3E	62 sec.

After data entry, your program must refresh the watchdog timer by rewriting the I/O port 443 (hex) while simultaneously setting it. When you want to disable the watchdog timer, your program should read I/O port 443 (hex).

The following example shows how you might program the watchdog timer in BASIC:

```
10      REM Watchdog timer example program
20      OUT &H443, data  REM Start and restart the
      watchdog
30      GOSUB 1000  REM Your application task #1
40      OUT &H443, data  REM Reset the timer
50      GOSUB 2000  REM Your application task #2
60      OUT &H443, data  REM Reset the timer
70      X=INP (&H443)  REM Disable the watchdog timer
80      END

1000   REM  Subroutine #1, your application task
      .
      .
      .
1070   RETURN
2000   REM  Subroutine #2, your application task
      .
      .
      .
2090   RETURN
```


Installing PC/104 Modules

This appendix gives instructions for installing PC/104 modules.

Appendix B Installing PC/104 Modules

B.1 Installing PC/104 Modules

The PCM-9577's PC/104 connectors give you the flexibility to attach PC/104 modules.

Installing these modules on the PCM-9577 is quick and simple. The following steps show to mount the PC/104 modules:

1. Remove the PCM-9577 from your system, paying particular attention to the safety instructions already mentioned above.
2. Make any jumper or link changes required to the CPU card now. Once the PC/104 module is mounted, you may have difficulty in accessing these.
3. Normal PC/104 modules have male connectors and mount directly onto the main card. (Refer to the diagram on the following page.)
4. Mount the PC/104 module onto the CPU card by pressing the module firmly but carefully onto the mounting connectors.
5. Secure the PC/104 module onto the CPU card using the four mounting spacers and screws.

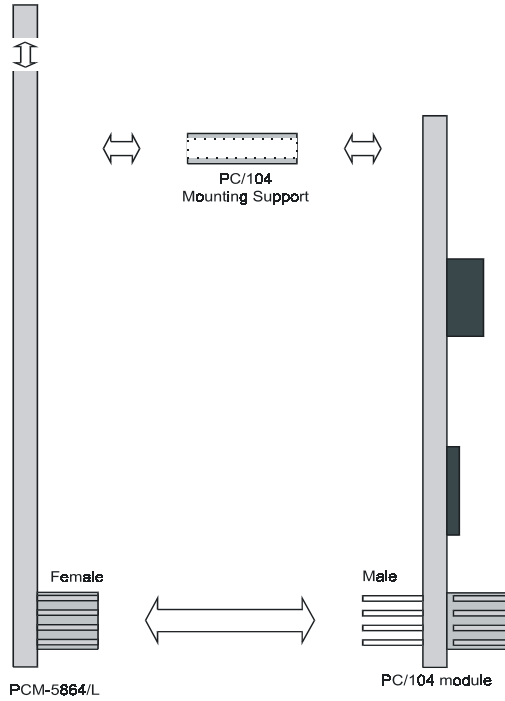


Figure B.1: PC/104 module mounting diagram

Pin Assignments

This appendix provides specialized information regarding:

- USB Connector
- CPU Fan Power Connector
- Ethernet 10/100Base-T Connector
- Ethernet 100/1000Base-T Connector
- Audio Connector
- CD Drive Connector
- Main Power Connector
- Keyboard and PS/2 Mouse Connector
- Floppy Drive Connector
- PC/104 Connector
- IDE (1st and 2nd) HDD Connector
- Parallel Port Connector
- Power & HDD LED, Reset Button Connector
- USB Connector
- Backlight Connector
- IR Connector
- CRT Display Connector
- TV-out Connector
- Flat Panel Connector
- Ext. Flat Panel Connector
- LCD Signal Mapping
- Peripheral power connector
- LVDS Interface Connector
- COM Port Connector
- CompactFlash Card Connector
- ATX Power Feature Connector
- 8 bit GPIO Connector

Appendix C Pin Assignments

C.1 CPU Fan Power Connector (FAN 1)



Table C.1: IR connector (FAN 1)

Pin	Signal
1	Fan speed signal input
2	+12 V
3	GND

C.2 Ethernet 10/100Base-T Connector (CN3)

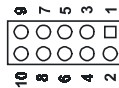


Table C.2: Ethernet 10/100Base-T connector (CN3)

Pin	Signal
1	VCC
2	CRS LED
3	RCV+
4	RCV-
5	BNC LED
6	GND
7	N/C
8	GND
9	XMT+
10	XMT-

C.3 Ethernet 10/100/1000 BASE-T connector (CN8)

Table C.3: Ethernet 100/1000-T connector (CN8)

Pin	Signal
1	NC
2	NC
3	MDI_3+ signal
4	MDI_3- signal
5	MDI_2+ signal
6	MDI_2- signal
7	MDI_1+ signal
8	MDI_1- signal
9	MDI_0+ signal
10	MDI_0- signal1

C.4 Audio Connector (CN5)

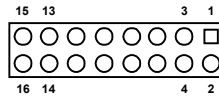


Table C.4: Audio connector (CN5)

Pin	Signal	Pin	Signal
1	SPEAKER OUT R+	2	SPEAKER OUT R-
3	SPEAKER OUT L+	4	SPEAKER OUT L-
5	LINE OUT R	6	LINE OUT L
7	GND	8	GND
9	LINE IN R	10	LINE IN L
11	GND	12	GND
13	NC	14	NC
15	MIC IN	16	GND

C.5 Audio CD In Connector (CN6)

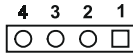


Table C.5: Audio line-in connector (CN6)

Pin	Signal
1	CD Audio R
2	GND
3	GND
4	CD Audio L

C.6 Main Power Connector (CN9)

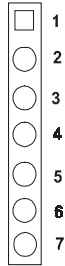


Table C.6: Main Power Connector (CN9)

Pin	Signal
1	+5 V
2	GND
3	GND
4	+12 V
5	N.C.
6	GND
7	+5 V

C.7 Keyboard and PS/2 Mouse Connector (CN27)

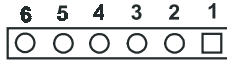


Table C.7: Keyboard and mouse connector (CN27)

Pin	Signal
1	KB CLOCK
2	KB DATA
3	MS CLOCK
4	GND
5	+5V (KB VCC)
6	MS DATA

C.8 Floppy Disk Drive Connector (CN24)

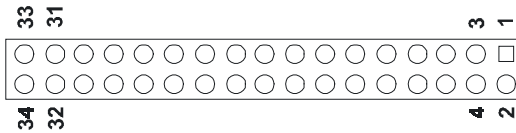


Table C.8: Floppy Disk Drive Connector (CN24)

Pin	Signal	Pin	Signal
1	GND	2	DENSITY SELECT*
3	GND	4	N/C
5	GND	6	DRIVE TYPE
7	GND	8	INDEX*
9	GND	10	MOTOR 0*
11	GND	12	DRIVE SELECT 1*
13	GND	14	DRIVE SELECT 0*
14	GND	16	MOTOR 1*
17	GND	18	DIRECTION*
19	GND	20	STEP*
21	GND	22	WRITE DATA*
23	GND	24	WRITE GATE*
25	GND	26	TRACK 0*
27	GND	28	WRITE PROTECT*
29	GND	30	READ DATA*
31	GND	32	HEAD SELECT*
33	GND	34	DISK CHANGE*

*low active

C.9 PC/104 Connectors (ISA1)

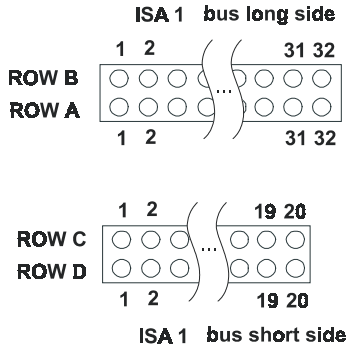


Table C.9: PC/104 connectors (ISA1)

Pin Number	Row A	Row B	Row C	Row D
1	IOCHCHK*	GND	GND	GND
2	SD7	RESET	SBHE*	MEMCS16*
3	SD6	+5 V	LA23	IOCS16*
4	SD5	IRQ9	LA22	IRQ10
5	SD4	-5V	LA21	IRQ11
6	SD3	DRQ2	LA20	IRQ12
7	SD2	-12V	LA19	IRQ15
8	SD1	ENDXFR*	LA18	IRQ14
9	SD0	+12V	LA17	DACKO*
10	IOCHRDY	(KEY)	MEMR*	DRQ0
11	AEN	SMEMW*	MEMW*	DACK5*
12	SA19	SMEMR*	SD8	DRQ5
13	SA18	IOW*	SD9	DACK6*
14	SA17	IOR*	SD10	DRQ6
15	SA16	DACK3*	SD11	DACK7*
16	SA15	DRQ3	SD12	DRQ7
17	SA14	DACK1*	SD13	+5V
18	SA13	DRQ1	SD14	MASTER*
19	SA12	REFRESH*	SD15	0V
20	SA11	SYSCLK	(KEY)	0V
21	SA10	IRQ7	----	----
22	SA9	IRQ6	----	----

Table C.9: PC/104 connectors (ISA1)

Pin Number	Row A	Row B	Row C	Row D
23	SA8	IRQ5	----	----
24	SA7	IRQ4	----	----
25	SA6	IRQ3	----	----
26	SA5	DACK2*	----	----
27	SA4	TC	----	----
28	SA3	BALE	----	----
29	SA2	+5V	----	----
30	SA1	OSC	----	----
31	SA0	0V	----	----
32	0V	0V	----	----

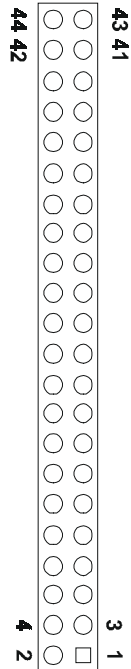
* low active

C.10 IDE Hard Drive Connector (CN12, CN13)

Table C.10: IDE HDD connector (CN12, CN13)

Pin	Signal	Pin	Signal
1	IDE RESET*	2	GND
3	DATA 7	4	DATA 8
5	DATA 6	6	DATA 9
7	DATA 5	8	DATA 10
9	DATA 4	10	DATA 11
11	DATA 3	12	DATA 12
13	DATA 2	14	DATA 13
15	DATA 1	16	DATA 14
17	DATA 0	18	DATA 15
19	SIGNAL GND	20	N/C
21	HDD 0	22	GND
23	IO WRITE	24	GND
25	IO READ	26	GND
27	HD READY	28	N/C
29	HDACK 0*	30	GND
31	IRQ14	32	N/C
33	ADDR 1	34	N/C
35	ADDR 0	36	ADDR 2
37	HARD DISK SELECT 0*	38	HARD DISK SELECT 1*
39	IDE ACTIVE*	40	GND
41	VCC	42	VCC
43	GND	44	N/C

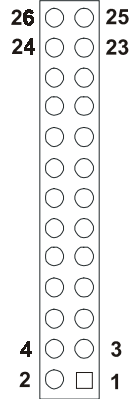
* low active



C.11 Parallel Port Connector (CN17)

Table C.11: Parallel Port Connector (CN17)

Pin	Signal	Pin	Signal
1	STROBE*	2	AUTOFD*
3	D0	4	ERR
5	D1	6	INIT*
7	D2	8	SLCTINI*
9	D3	10	GND
11	D4	12	GND
13	D5	14	GND
15	D6	16	GND
17	D7	18	GND
19	ACK*	20	GND
21	BUSY	22	GND
23	PE	24	GND
25	SLCT	26	N/C



* low active

C.12 Power & HDD LED Connector(CN11)

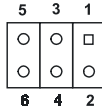


Table C.12: Power & HDD LED Connector (CN11)

Pin	Signal
1	+5V
2	GND
3	power LED+ (+5V)
4	HDD LED +
5	power LED - (GND)
6	HDD LED -

C.13 Reset Button Connector (J1)



Table C.13: Reset Button Connector (J1)

Pin	Signal
1	Reset signal input
2	GND

C.14 USB Connector (CN1, CN2)

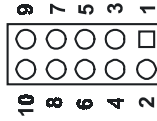


Table C.14: USB Connector (CN1, CN2)

Pin	Signal	Pin	Signal
1	+5 V	2	+5 V
3	UV-	4	UV-
5	UV+	6	UV+
7	GND	8	GND
9	Chassis GND	10	N/C

C.15 LCD Inverter Backlight Connector (CN21)

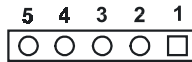


Table C.15: LCD Inverter Backlight Connector (CN21)

Pin	Signal
1	+12 V
2	GND
3	ENABKL
4	VBR
5	+5 V

C.16 IR Connector (CN26)

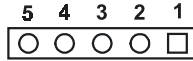


Table C.16: IR Connector (CN26)

Pin	Signal
1	VCC (5 V)
2	N.C.
3	IR receive
4	GND
5	IR transmit

C.17 CRT Display Connector (CN22)

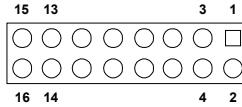


Table C.17: CRT Display Connector (CN22)

Pin	Signal	Pin	Signal
1	RED	9	VGA G
2	+5 V	10	H-sync signal
3	GREEN	11	VGA G
4	VGA G	12	V-sync signal
5	BLUE	13	VGA G
6	N/C	14	VGA CK
7	N/C	15	VGA G
8	VGA Data	16	N/C

C.18 TV (video) Out Connector (CN20)

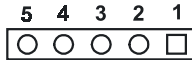


Table C.18: TV (video) Out Connector (CN20)

Pin	Signal
1	Luminance out (S-Video Y output, brightness)
2	Chrominance out (S-Video C output, color)
3	GND
4	GND
5	Composite video out

C.19 Flat Panel Connector (CN23)

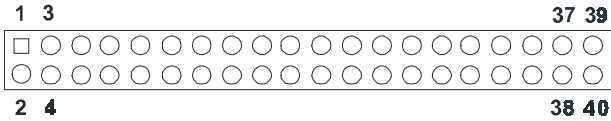


Table C.19: Flat Panel Connector (CN23)

Pin	Signal	Pin	Signal
1	VDDSAFE5 (+5v output)	2	VDDSAFE5 (+5v output)
3	GND	4	GND
5	VDDSAFE3 (+3.3 v output)	6	VDDSAFE3 (+3.3 v output)
7	N/C	8	GND
9	P0	10	P1
11	P2	12	P3
13	P4	14	P5
15	P6	16	P7
17	P8	18	P9
19	P10	20	P11
21	P12	22	P13
23	P14	24	P15
25	P16	26	P17
27	P18	28	P19
29	P20	30	P21
31	P22	32	P23
33	GND	34	GND
35	SHFCLK	36	FLM
37	M/DE	38	LP
39	N/C	40	ENAVEE

Note: The model number of the CN11 socket is DF13A-40DP-1.25V (Hirose Electric Co., Ltd.)

C.20 Extended Flat Panel Display Connector (CN18)

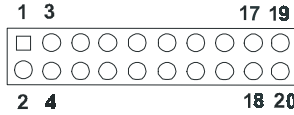


Table C.20: Extended Flat Panel Display Connector (CN18)

Pin	Signal	Pin	Signal
1	GND	2	GND
3	P24	4	P25
5	P26	6	P27
7	P28	8	P29
9	P30	10	P31
11	P32	12	P33
13	P34	14	P35
15	GND	16	GND
17	N/C	18	N/C
19	N/C	20	N/C

Note: The model number of the CN10 socket is DF13A-20DP-1.25V (Hirose Electric Co., Ltd.)

C.21 LCD Signal Mapping

Table C.21: LCD Signal Mapping

Pin Name	16-bit DSTN	24-bit DSTN	18-bit TFT	24-bit TFT	36-bit TFT
PD0		LB3		B0	R00
PD1		LB2		B1	R10
PD2	LB1	LB1	B0	B2	R01
PD3	LB0	LB0	B1	B3	R11
PD4		UB3	B2	B4	R02
PD5		UB2	B3	B5	R12
PD6	UB1	UB1	B4	B6	R03
PD7	UB0	UB0	B5	B7	R13
PD8		LG3		G0	R04
PD9	LG2	LG2		G1	R14
PD10	LG1	LG1	G0	G2	R05
PD11	LG0	LG0	G1	G3	R15
PD12		UG3	G2	G4	G00
PD13	UG2	UG2	G3	G5	G10
PD14	UG1	UG1	G4	G6	G01
PD15	UG0	UG0	G5	G7	G11
PD16		LR3		R0	G02
PD17	LR2	LR2		R1	G12
PD18	LR1	LR1	R0	R2	G03
PD19	LR0	LR0	R1	R3	G13
PD20		UR3	R2	R4	G04
PD21	UR2	UR2	R3	R5	G14
PD22	UR1	UR1	R4	R6	G05
PD23	UR0	UR0	R5	R7	G15
PD24					B00
PD25					B10
PD26					B01
PD27					B11
PD28					B02
PD29					B12
PD30					B03
PD31					B13
PD32					B04
PD33					B14
PD34					B05
PD35					B15

C.22 LVDS Connector (CN15)

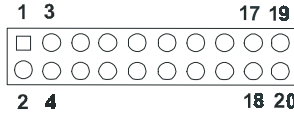


Table C.22: LVDS Connector (CN15)

Pin	Signal	Pin	Signal
1	GND	2	GND
3	TX0+(Channel 1)	4	TX0+(Channel 2)
5	TX0-(Channel 1)	6	TX0-(Channel 2)
7	TX1+(Channel 1)	8	TX1+(Channel 2)
9	TX1-(Channel 1)	10	TX1-(Channel 2)
11	TX2+(Channel 1)	12	TX2+(Channel 2)
13	TX2-(Channel 1)	14	TX2-(Channel 2)
15	TX3+(Channel 1)	16	TX3+(Channel 2)
17	TX3-(Channel 1)	18	TX3-(Channel 2)
19	VDD (+3.3V)	20	VDD (+3.3V)

C.23 Peripheral Power Connector (CN7)



Table C.23: Peripheral Power Connector (CN7)

Pin	Signal
1	-5 V
2	GND
3	-12 V

C.24 COM Port Connector (CN16)

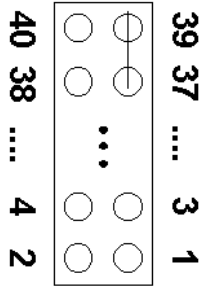


Table C.24: COM Port Connector (CN16)

Pin	Signal	Pin	Signal
1	RLSD1 (DCD1)	2	DSR1
3	RX1	4	RTS1
5	TX1	6	CTS1
7	DTR1	8	RI1
9	GND	10	GND
11	RLSD2 (DCD2)	12	DSR2
13	RX2	14	RTS2
15	TX2	16	CTS2
17	DTR2	18	RI2
19	GND	20	NC
21	RLSD3 (DCD3)	22	DSR3
23	RX3	24	RTS3
25	TX3	26	CTS3
27	DTR3	28	RI3
29	GND	30	NC
31	RLSD4 (DCD4)	32	DSR4
33	RX4	34	RTS4
35	TX4	36	CTS4
37	DTR4	38	RI4
39	GND	40	NC

C.25 CompactFlash Card Connector (CN29)

Table C.25: CompactFlash Card Connector (CN29)

Pin	Signal	Pin	Signal
1	GND	2	D03
3	D04	4	D05
5	D06	6	D07
7	*CS0	8	A10
9	*ATA SEL	10	A09
11	A08	12	A07
13	+5 V	14	A06
15	A05	16	A04
17	A03	18	A02
19	A01	20	A00
21	D00	22	D01
23	D02	24	-IOCS16
25	*CD2	26	-CD1
27	D11	28	D12
29	D13	30	D14
31	D15	32	-CS1
33	*VS1	34	-IORD
35	*IOWR	36	-WE
37	INTRQ	38	+5 V
39	*CSEL	40	-VS2
41	*RESER	42	IORDY
43	*INPACK	44	-REG
45	*DASP	46	-PDIAG
47	D08	48	D09
49	D10	50	GND

* low active

C.26 ATX Power Feature Connector (CN10)



Table C.26: ATX Power Feature Connector (CN10)

Pin	Signal
1	5VSB (Stand by voltage)
2	GND
3	PS. ON#

C.27 GPIO Connector (CN25)

Table C.27: GPIO Connector (CN25)

Pin	Signal
1	+5V output
2	SIO_GP10 signal
3	SIO_GP11 signal
4	SIO_GP14 signal
5	SIO_GP15 signal
6	SIO_GP17 signal
7	SIO_GP21 signal
8	SIO_GP22 signal
9	SIO_GP23 signal
10	GND

C.28 Mini PCI Connector (CN28)

Table C.28: Mini PCI Connector (CN28)

Pin	Signal	Pin	Signal
1	TIP Key	2	RING Key
3	8PMJ-33, 4	4	8PMJ-13, 4
5	8PMJ-63, 4	6	8PMJ-23, 4
7	8PMJ-73, 4	8	8PMJ-43, 4
9	8PMJ-83, 4	10	8PMJ-53, 4
11	LED1_GRNP	12	LED2_YELP
13	LED1_GRNN	14	LED2_YELN
15	CHSGND	16	RESERVED
17	INTB#	18	5V
19	3.3V	20	INTA#
21	RESERVED	22	RESERVED
23	GROUND	24	3.3VAUX
25	CLK	26	RST#
27	GROUND	28	3.3V

Table C.28: Mini PCI Connector (CN28)

Pin	Signal	Pin	Signal
29	REQ#	30	GNT#
31	3.3V	32	GROUND
33	AD[31]	34	PME#
35	AD[29]	36	RESERVED
37	GROUND	38	AD[30]
39	AD[27]	40	3.3V
41	AD[25]	42	AD[28]
43	RESERVED	44	AD[26]
45	C/BE[3]#	46	AD[24]
47	AD[23]	48	IDSEL
49	GROUND	50	GROUND
51	AD[21]	52	AD[22]
53	AD[19]	54	AD[20]
55	GROUND	56	PAR
57	AD[17]	58	AD[18]
59	C/BE[2]#	60	AD[16]
61	IRDY#	62	GROUND
63	3.3V	64	FRAME#
65	CLKRUN#	66	TRDY#
67	SERR#	68	STOP#
69	GROUND	70	3.3V
71	PERR#	72	DEVSEL#
73	C/BE[1]#	74	GROUND
75	AD[14]	76	AD[15]
77	GROUND	78	AD[13]
79	AD[12]	80	AD[11]
81	AD[10]	82	GROUND
83	GROUND	84	AD[09]
85	AD[08]	86	C/BE[0]#
87	AD[07]	88	3.3V
89	3.3V	90	AD[06]

Table C.28: Mini PCI Connector (CN28)

Pin	Signal	Pin	Signal
91	AD[05]	92	AD[04]
93	RESERVED	94	AD[02]
95	AD[03]	96	AD[00]
97	5V	98	RESERVED_WIP5
99	AD[01]	100	RESERVED_WIP5
101	GROUND	102	GROUND
103	AC_SYNC	104	M66EN
105	AC_SDATA_IN	106	AC_SDATA_OUT
107	AC_BIT_CLK	108	AC_CODEC_
109	AC_CODEC_ID1#	110	AC_RESET#
111	MOD_AUDIO_MON	112	RESERVED
113	AUDIO_GND	114	GROUND
115	SYS_AUDIO_OUT	116	SYS_AUDIO_
117	SYS_AUDIO_OUT GND	118	SYS_AUDIO_IN GND
119	AUDIO_GND	120	AUDIO_GND
121	RESERVED	122	MPCIACT#
123	VCC5VA	124	3.3VAUX

3. 8PMJ = 8 position modular jack connector pin, hereinafter referred to as RJ45 (see IEC 603-7:1990), see Table 2-4 for details.
4. Note: These signals are optional and are defined to provide convenient access to LAN signals without cabling. However, due to voltage limitations of the Type III connector, additional insulation or engineering will be required to meet IEEE 802.3 and 802.5 electrical isolation requirements.
5. Work in progress by the Mini PCI Working Group System Connector Sub Group.

System Assignments

This Appendix contains information of a detailed nature: It includes:

- System I/O ports
- 1st MB memory map
- DMA channel assignments
- Interrupt assignments

Appendix D System Assignments

D.1 System I/O Ports

Table D.1: System I/O Ports

Addr. range (Hex)	Device
000-01F	DMA controller
020-021	Interrupt controller 1, master
040-05F	8254 timer
060-06F	8042 (keyboard controller)
070-07F	Real-time clock, non-maskable interrupt (NMI) mask
080-09F	DMA page register
0A0-0BF	Interrupt controller 2
0C0-0DF	DMA controller
0F0	Clear math co-processor
0F1	Reset math co-processor
0F8-0FF	Math co-processor
1F0-1F8	Fixed disk
200-207	Reserved (Game I/O)
278-27F	Parallel printer port 2 (LPT 3)
2E8-2EF	Series port 4
2F8-2FF	Serial port 2
300-31F	Prototype card
360-36F	Reserved
378-37F	Parallel printer port 1 (LPT 2)
380-38F	SDLC, bisynchronous 2
3A0-3AF	Bisynchronous 1
3B0-3BF	Monochrome display and printer adapter (LPT1)
3C0-3CF	Reserved
3D0-3DF	Color/graphics monitor adapter
3E8-3EF	Series port 3
3F0-3F7	Diskette controller
3F8-3FF	Serial port 1

* PNP audio I/O map range from 220 ~ 250H (16 bytes)
MPU-401 select from 300 ~ 330H (2 bytes)

D.2 1st MB memory map

Table D.2: 1st MB memory map

Addr. range (Hex)	Device
F0000h - FFFFFh	System ROM
*CC000h - EFFFFh	Unused (reserved for Ethernet ROM)
C0000h - CBFFFh	Expansion ROM (for VGA BIOS)
B8000h - BFFFFh	CGA/EGA/VGA text
B0000h - B7FFFh	Unused
A0000h - AFFFFh	EGA/VGA graphics
00000h - 9FFFFh	Base memory

* If Ethernet boot ROM is disabled (Ethernet ROM occupies about 16 KB)

* E0000 - EFFFF is reserved for BIOS POST

D.3 DMA channel assignments

Table D.3: DMA channel assignments

Channel	Function
0	Available
1	Available (audio)
2	Floppy disk (8-bit transfer)
3	Available (parallel port)
4	Cascade for DMA controller 1
5	Available
6	Available
7	Available

* Audio DMA select 1, 3, or 5

** Parallel port DMA select 1 (LPT2) or 3 (LPT1)

D.4 Interrupt assignments

Table D.4: Interrupt assignments

Interrupt#	Interrupt source
IRQ 0	Interval timer
IRQ 1	Keyboard
IRQ 2	Interrupt from controller 2 (cascade)
IRQ 3	COM2
IRQ 4	COM1
IRQ 5	COM4
IRQ 6	FDD
IRQ 7	LPT1
IRQ 8	RTC
IRQ 9	Reserved (audio)
IRQ 10	COM3
IRQ 11	Reserved for watchdog timer
IRQ 12	PS/2 mouse
IRQ 13	INT from co-processor
IRQ 14	Primary IDE
IRQ 15	Secondary IDE for CFC

* Ethernet interface IRQ select: 9, 11, 15

* PNP audio IRQ select: 9, 11, 15

* PNP USB IRQ select: 9, 11, 15

* PNP ACPI IRQ select: 9, 11, 15

Appendix

E

Optional Extras for the PCM-9577

Appendix E Optional Extras

The PCM-9577F requires several cables for normal operation. You can make them yourself or purchase an optional cable kit assembly, which includes the following:

E.1 PCM-10586-5A00 Cable kit for PCM-9577F

Table E.1: PCM-10586-5V00 wiring kit for PCM-9577F

Part No.	Cable Description	PCM-9577F Connector	Terminating Connector
1701440350	2.5" and 1.8" IDE	CN12	2 x 8 pin header (2 mm) 15-pin DSUB
1701440452	3.5" IDE DMA/66 (40pin)	CN13	44-pin, 2 mm, female IDC (350 mm)
1701340603	Dual Floppy, 3.5" and 5.25"(34p)	CN24	40-pin, 2.54 mm, female IDC(450 mm)
1701260250	Parallel Port	CN17	34-pin Dual Floppy
1701100202	Network, 10-Base-T	CN3	25-pin female DSUB
1701160101	VGA CRT	CN22	RJ45 8-pin modular jack
1700000190	Keyboard and PS/2 mouse	CN27	5-pin circular DIN, 6-pin circular DIN
1703030300	Peripheral power (-5V and -12V)	CN7	(3-conductor)
1701400181	COM 1 - 4 cable	CN16	40-pin, 9-pin male DSUB x4
1700160160	Audio Cable	CN6	F3.5mm 16-pin, five female phone jacks

E.2 PCM-10586-5G00 Cable kit for PCM-9577FG

Table E.2: PCM-10586-5G wiring kit for PCM-9577FG

Part No.	Cable Description	PCM-9577FG Connector	Terminating Connector
1701440350	2.5" and 1.8" IDE	CN12	44-pin 2 mm, female IDC(350 mm)
1701440452	3.5" IDE DMA/66 (40P)	CN13	40-pin 2.54 mm, female IDC(450 mm)
1701340603	Dual floppy, 3.5" and 5.25"(34p)	CN24	34-pin dual floppy
1701260250	Parallel port	CN17	25-pin female DSUB
1701100202	Network, 100 Base-T	CN3	RJ45 8-pin modular jack
1701100151	Network, 1000 Base-T	CN8	RJ45 8-pin modular jack
1701160101	VGA CRT	CN22	2 x 8-pin header (2mm) 15-pin DSUB
1703060191	Keyboard and PS/2 mouse	CN27	5-pin circular DIN, 6-pin circular DIN
1703030300	Peripheral power (-5V and -12V)	CN7	(3-conductor)
1701400181	COM 1-4 cable	CN16	40-pin 9-pin male DSUB x4
1700160160	Audio cable	CN6	F 3.5 mm 16-pin 5 female phone jacks

1. Optional 24 bit LCD cable adapter(5 V) "9681000041," 24 bit LCD cable adapter(3.3 V) "9681000040."
2. Optional USB cable "1703100260" for CN20 (PCM-9575) or CN3 (PCM-9577F)

E.3 Optional LCD cables 10.4" TFT LCD panel (CN23)

Table E.3: Optional LCD cables 10.4" TFT LCD

Part no.	Cable description	Panel type
1700090501	Cable DF9 (2 mm) 50 cm	Toshiba LTM10C042
1703440151	Wire 30P/44P 15 cm	Toshiba LTM12C275A

Note: The above LCD cables have links via 24-bit LCD cable adaptor (E.6) to connect to PCM-9577

E.4 Optional USB cable (CN1 or CN2)

Optional USB cable (2-channel) Part no: 1703100261

Optional USB Cable for MBPC-300 Part no. 1703100121

E.5 ATX Power Control Cable (CN10)

part no.: 1703070101

E.6 Optional 24 bit LCD cable adaptor

This converts the Hirose “DF20A” type connector to a 20 x 2- pin header. It supports 3.3 V or 5 V via pins 5 and 6.

part no: 9681000041 (for 5 V LCD panel)

part no: 9681000040 (for 3.3 V LCD panel)

Appendix

F

Mechanical Drawings

Appendix F Mechanical Drawings

F.1 Mechanical Drawings

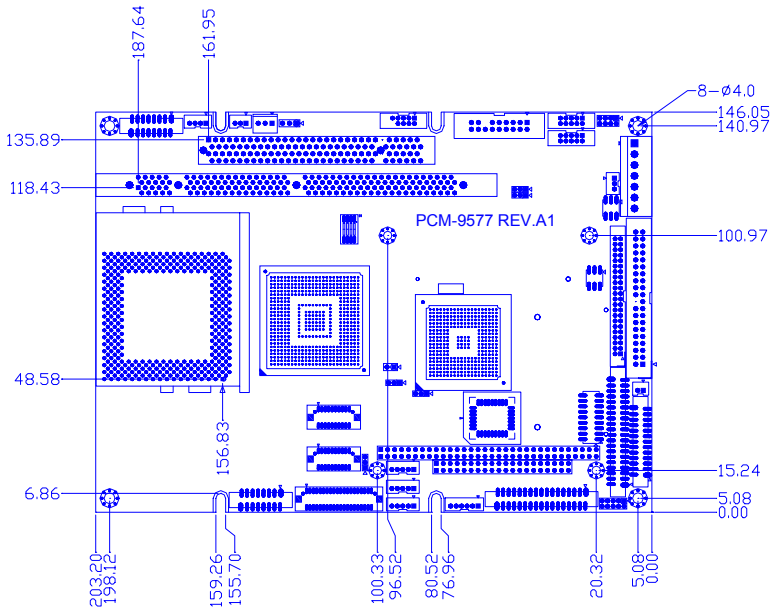


Figure F.1: PCM-9577 Mechanical Drawing (component side)

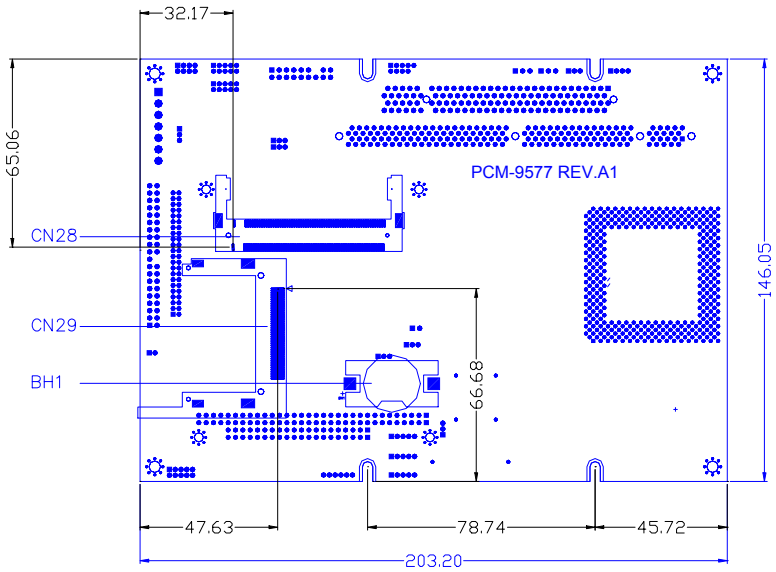


Figure F.2: PCM-9577 Mechanical Drawing (solder side)

