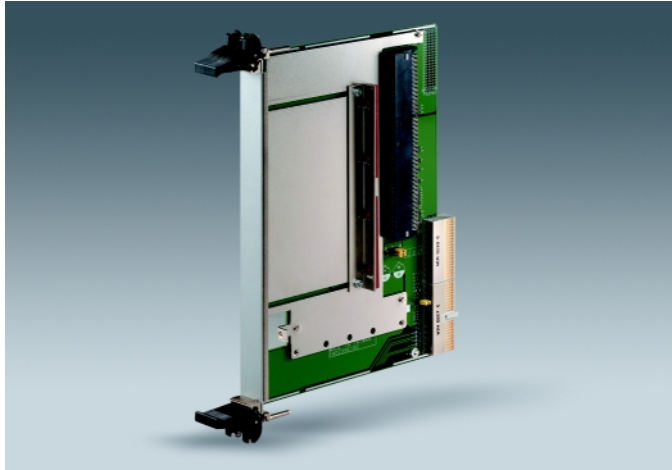


MIC-3961

6U CompactPCI® PCI Carrier Board



Features

- 6U CompactPCI form factor
- 64-bit PCI interface
- 3.3 V/5 V selectable
- 33/66 MHz PCI clock selectable
- Hold-down bracket to secure PCI board

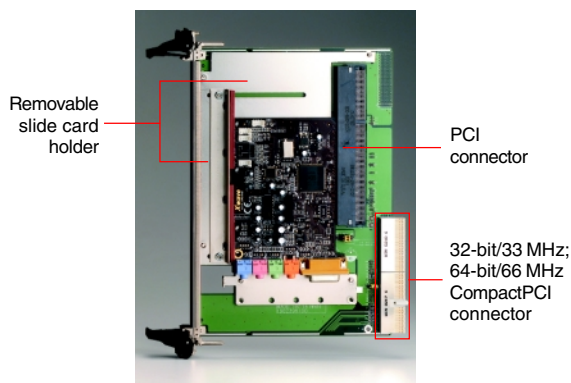
Introduction

The MIC-3961 is a 6U CompactPCI PCI carrier board that can hold most PCI cards in a one slot CompactPCI space. This card allows users to adapt a 32/64-bit PCI card to a CompactPCI platform through the PCI bus that has an edge connector to the host via J1/J2 connector of

this carrier. The hold-down bracket secures the PCI card onto the carrier board and protects it against vibration and shock. In addition, the bracket allows any cables to be routed through the front slot panel.

Specifications

Bus	PCI	32-bit/33 MHz, 64-bit/66 MHz	
Power	Power Consumption	1 W @ 33 MHz	
Environment	Temperature	Operating 0 ~ 60 °C (32 ~ 140 °F)	Non-Operating -20 ~ 80 °C (-4 ~ 176 °F)
	Humidity	--	5 ~ 95 % @ 60 °C, non-condensing
	Vibration (5-500 Hz)	1.0 Grms	2.0 G
Physical	Dimensions (W x D)	233.35 x 160 mm (9.2" x 6.3"), 1-slot width	
	Weight	0.6 Kg (1.32 lb)	
Reliability	MTTR	5 minutes	
Compliance	Standard	PICMG® 2.0, R3.0 CompactPCI Specification	



Recommended Configurations

PCI Carrier Board	Enclosure
MIC-3961	MIC-3036, MIC-3056, MIC-3038, MIC-3041, MIC-3081

* Note: The space is required for 2-slot wide as standard assembly

Ordering Information

Part Number	Descriptions
MIC-3961-A	6U CompactPCI PCI carrier board

* Please contact your sales distributor for optional internal-to-panel cable adaptation assembly set

For More Information

www.advantech.com/nc

Enter

ADVANTECH

• All brand names and registered trademarks are the property of their respective owner
• All specifications are subject to change without notice

Date of Publication: 2003-07-14