

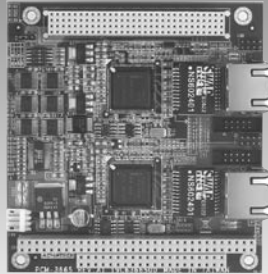
PCM-3665

PCM-3296

Dual Giga LAN Module

PC/104+ Wireless LAN Module

NEW



PCM-3665



Features

- Supports both Intel® 82541PI
- Supports Half / Full duplex flow control
- 10/100/1000BASE-T Ethernet
- Supports Windows® NT 4.0, Windows® 98/2000/XP

Specifications

General

- **Chipset** Intel 82541PI (PCI 10/100/1000Base-T)
- **Port** Single/Twin Ethernet port
- **Network Port** Provide a standard IEEE 802.3 Ethernet Interface for 1000Base-T, 100Base-TX, and 10Base-T applications (802.3, 802.3u, and 802.3ab)
- **Compatibility** PCI version 2.2, 33MHz PCI

Mechanical and Environmental

- **Dimension (L x W)** 96 x 90 mm (3.8" x 3.5")
- **Weight** 0.09 kg (0.198 lb)
- **Temperature** Operating: 0 ~ 60° C (32 ~ 140° F)
Storage: -40 ~ 85° C (-40 ~ 185° F)
- **Operating Humidity** 0% ~ 90% relative humidity, non-condensing

Power

- **Power Consumption** Dual LAN: +5 V @ 1.2 A (typical)
Single LAN: +5 V @ 0.6 A (typical)
- **Power Supply Voltage** +5 V, ±5 % tolerance on power supply

Packing List

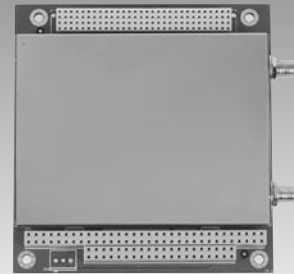
- 1 x Startup Manual
- 1 x CD-ROM (Manual, Driver, Utility)
- 1 x PCM-3665
- 1 Giga LAN cable for PCM-3665-01A1E
- 2 Giga LAN cable for PCM-3665P-00A1E

Ordering Information

Standard

- **PCM-3665-00A1E** Dual Giga LAN with RJ45 connector Module
- **PCM-3665P-00A1E** Dual Giga LAN w/o RJ45 connector Module
- **PCM-3665-01A1E** Single Giga LAN w/o RJ45 connector Module

NEW



PCM-3296

Features

- 802.11b/g WLAN module
- Data rate up to 54 Mbps
- Supports Windows 98SE/Me/NT/2000/XP/CE

Specifications

General

- **Chipset** VT6655
- **Frequency Band** 2400-2483.5 MHz (for US, Canada)
2400-2483.5 MHz (for Europe)
2400-2497 MHz (for Japan)
- **Operating Channel** IEEE 802.1b, Direct Sequence Spread Sepcturm, IEEE 802.11g, Orthogonal Frequency Division Multiplexing
- 11 Channels (US, Canada)
- 13 Channels (Europe)
- 14 Channels (Japan)
- **Data Rate** Up to 54 Mbps

Mechanical and Environmental

- **Dimension (L x W)** 96 x 90 mm (3.8" x 3.5")
- **Weight** 0.09 kg (0.198 lb)
- **Temperature Operating** 0 ~ 50° C
Storage -20 ~ 70° C
- **Operating Humidity** 0% ~ 90% relative humidity, non-condensing

Power

- **Power Consumption** -802.11b: 250 mA @ 3.3 V, 802.11g: 230 mA @ 3.3 V
-Listening: 190 mA @ 3.3 V

Packing List

- 1 x Startup Manual
- 1 x CD-ROM (Manual, Driver, Utility)
- 1 x PCM-3296
- 2 x External antenna

Ordering Information

Standard

- **PCM-3296-00A1E** PC/104+ Wireless LAN Module