

# ADAM-5017UH

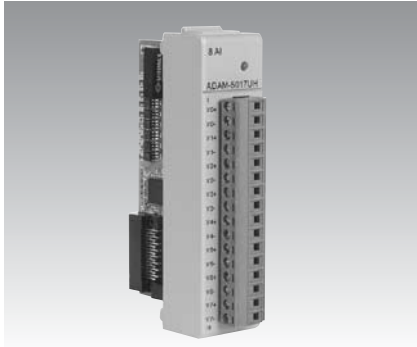
# ADAM-5018

# ADAM-5018P

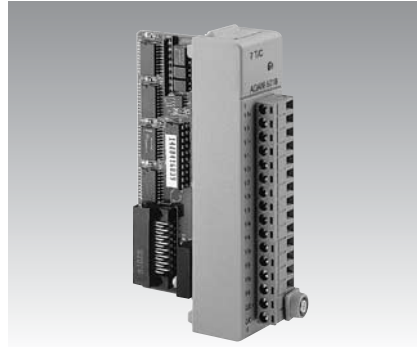
## 8-ch Ultra High Speed Analog Input Module

## 7-ch Thermocouple Input Module

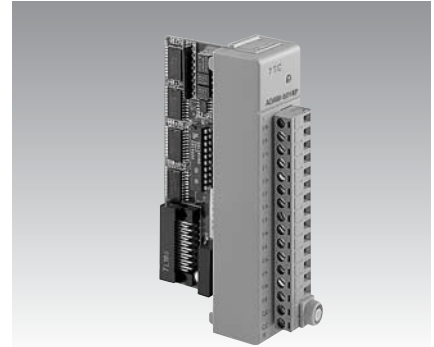
## 7-ch Thermocouple Input Module with Independent Input Range



ADAM-5017UH



ADAM-5018



ADAM-5018P



### Specifications

#### General

- **Certifications** CE
- **Connectors** 1 x Plug-in screw terminal (# 14-22 AWG)
- **Power Consumption** 2.2 W (max.)

#### Analog Input

- **Accuracy** ±0.1% or better
- **Bandwidth** 200 kHz
- **Channels** 8 differential
- **Differential Non-linear** +/-1 LSB
- **Input Impedance** Voltage: 2 MΩ  
Current: 120Ω (Build-in 12Ω register for Current Input)
- **Integral Non-linear** +/-1 LSB
- **Input Type** mV, V, mA
- **Input Range** ±10 V, +0 ~ 10 V, 0 ~ 20 mA, +4 ~ 20 mA  
Configured by User
- **Low pass filter** 12-bit
- **Resolution** 12-bit
- **Sampling Rate** Depends on base unit

ADAM-5000/485 & 5000E: 100 Samples/sec max (Total): one ADAM-5017UH installed

ADAM-5000/TCP: 100 Samples/sec max (Total): one ADAM-5017UH installed

ADAM-5510: 200K Samples/sec max (Single Channel): one ADAM-5017UH installed

ADAM-5550: 1K Samples/sec per channel: one ADAM-5017UH installed

\*Depending on the performance of client server or controller

- **Signal Input Bandwidth** 200 kHz for both voltage and current inputs

#### Protection

- **Isolation Voltage** 3000 V<sub>DC</sub>

#### Note:

- 1) The voltage difference between any two pins must not exceed 15 V
- 2) Distinct range settings allowed on each channel

### Ordering Information

- **ADAM-5017UH** 8-ch Ultra High Speed Analog Input Module

### Specifications

#### General

- **Certifications** CE, FM
- **Connectors** 1 x Plug-in screw terminal (# 14-22 AWG)
- **Power Consumption** 0.63 W (max.)

#### Thermocouple Input

- **Accuracy** ±0.1% or better
- **Bandwidth** 13.1 Hz @ 50 Hz  
15.72 Hz @ 60 Hz
- **Channels** 7 differential
- **CMR @ 50/60 Hz** 92 dB min
- **Input Impedance** 2 MΩ
- **Input Range** ±15 mV, ±50 mV, ±100 mV, ±500 mV, ±1 V, ±2.5 V, ±20 mA  
mV, V, mA, thermocouple
- **Input Type** Thermocouple
- **Resolution** 16-bit
- **Sampling Rate** 10 samples/sec. (total)
- **Span Drift** ±25 PPM/°C
- **Zero Drift** ±6 μV/°C
- **T/C Type and Temperature Range**

J	0°	~	760° C
K	0°	~	1370° C
T	-100°	~	400° C
E	0°	~	1000° C
R	500°	~	1750° C
S	500°	~	1750° C
B	500°	~	1800° C

#### Protection

- **Fault and Overvoltage Protection** Withstands overvoltage up to ±35 V
- **Isolation Voltage** 3,000 V<sub>DC</sub>

### Ordering Information

- **ADAM-5018** 7-ch Thermocouple Input Module

### Specifications

#### General

- **Certifications** CE
- **Connectors** 1 x Plug-in screw terminal (# 14-22 AWG)
- **Power Consumption** 0.63 W (max.)

#### Thermocouple Input

- **Accuracy Bandwidth** ±0.1% or better  
13.1 Hz @ 50 Hz  
15.72 Hz @ 60 Hz
- **Channels** 7 differential with Independent Input Range
- **CMR @ 50/60 Hz** 92 dB min
- **Input Impedance** 20 MΩ (Build-in 120 Ω Register for Current Input)
- **Input Range and Types**

J	0	~	760° C
K	0	~	1370° C
T	-100	~	400° C
E	0	~	1000° C
R	500	~	1750° C
S	500	~	1750° C
B	500	~	1800° C
- **Current mode** ±20 mA, 4-20mA
- **Voltage** ±15 mV, ±50 mV, ±100 mV, ±500 mV  
±1 V, ±2.5 V
- **Resolution** 16-bit
- **Sampling Rate** 10 samples/sec. (total)
- **Span Drift** ±25 PPM/°C
- **Zero Drift** ±6 μV/°C
- **High Common Mode** 200 V<sub>DC</sub>

#### Protection

- **Fault and Overvoltage Protection** Withstands over voltage up to ±35 V
- **Isolation Voltage** 3,000 V<sub>DC</sub>
- **Filter function** Yes
- **Built-in TVS/ESD Protection**

### Ordering Information

- **ADAM-5018P** 7-ch Thermocouple Input Module with Independent Input Range