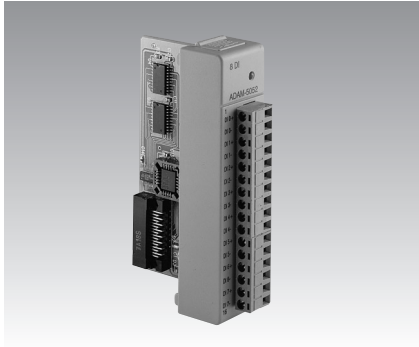


ADAM-5052 ADAM-5053S ADAM-5055S

8-ch Isolated Digital Input Module

32-ch Isolated Digital Input Module

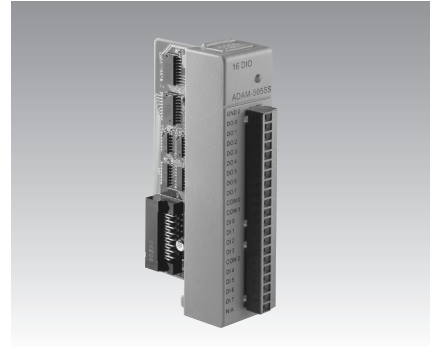
16-ch Isolated Digital I/O Module with LED



ADAM-5052



ADAM-5053S



ADAM-5055S



Specifications

General

- **Certifications** CE, FM
- **Connectors** 1 x Plug-in screw terminal (# 14 ~ 22 AWG)
- **Power Consumption** 0.27 W (max.)

Digital Input

- **Channels** 8
- **Input Resistance** 3 k Ω /0.5 W
- **Logic Level** Logic level 0: 1 V_{max}
Logic level 1: 3.5 ~ 30 V

Protection

- **Isolation Voltage** 5000 V_{RMS}

Ordering Information

- **ADAM-5052** 8-ch Isolated Digital Input Module

Specifications

General

- **Certifications** CE
- **Connector** 40 pin
- **Power Consumption** 1 W (max.)

Digital Input

- **Channels** 32
- **Channel I/O Type** DI
24 Vdc (Sink/Source)

Logic Level

- **Wet Contact** Logic level 0: 10 V Max.
Logic level 1: 19 ~ 35 V

Protection

- **Isolation Voltage** 2500V_{DC}
- **Overvoltage Protection** 35 V_{DC}

Note: only for ADAM-5550 Series

Ordering Information

- **ADAM-5053S** 32-ch Digital Input Module
- **ADAM-3920** 20-pin Flat Cable Wiring Board

Specifications

General

- **Certifications** CE
- **Connectors** 1 x Plug-in screw terminal (# 14 ~ 28 AWG)
- **LED Indicators** On: Active
Off: Inactive
- **Power Consumption** 0.68 W (max.)

Digital I/O

- **Channels** 16
- **Channel I/O Type** 8 DO, 8 DI
- **Logic Level (DI)** Dry contact:
Logic level 0: open
Logic level 1: close to GND
Wet contact:
Logic level 0: 3 V max.
Logic level 1: 10 ~ 50 V
- **Digital Output** Open collector to 40 V
200 mA max. load
- **Power Dissipation** Channel : 1 W max.
Total : 2.2 W
(8 channels)

Protection

- **Isolation Voltage** 2500 V_{DC}
- **Overvoltage Protection** 70 V_{DC} (DI only)

Ordering Information

- **ADAM-5055S** 16-ch Isolated Digital I/O Module with LED