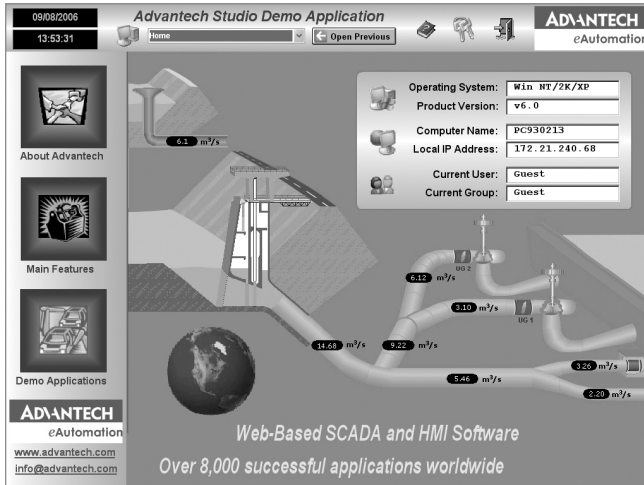


# Advantech Studio

Web-enabled HMI/  
SCADA Software



## Features

- Publish real-time dynamic and animated graphic screens, trends, alarms, reports, and recipes to standard browsers
- Import and export recipes, reports and real-time data using the XML format
- Use the same development environment as applications running on Microsoft® Windows® NT/2000/XP and CE.NET or on the Web
- Integrates seamlessly with your Windows desktop applications (such as Microsoft Word and Excel)
- View multiple clients from one Web browser
- Multi-level security for applications, including use over Intranets and Internet
- Conforms to industry standards such as Microsoft DNA, OPC, DDE, ODBC, XML, and ActiveX
- Software protection type: Softkey/HardKey

## Introduction

Advantech Studio is a powerful, integrated collection of automation tools that includes all the building blocks required to develop modern Human Machine Interfaces (HMIs), and Supervisory Control and Data Acquisition System (SCADA) applications that run on Windows NT/2000/XP and CE.NET, or in an Internet/Intranet environment. A simple drag and drop, point and click development environment simplifies the most complex behavior of your live processes, but a flexible and easy-to-use scripting language is also available for special requirements. Advantech Studio is currently being used in nearly 2,000 installations worldwide.

Advantech Studio for Windows CE.NET is based on Advantech Studio's full scale supervisory control and monitoring system, and has almost all of the same features, including an object-oriented database, math functions, report generation, archiving, alarms, batch recipes, and interfaces for PLCs, remote I/O and TCP/IP networking. In other words, Advantech Studio for Windows CE.NET is a full-function supervisory control and monitoring system that fits in the palm of your hand or can be embedded in the chipset of a low-cost operator interface. Advantech Studio for Windows CE.NET is software for complete supervisory control and process monitoring with an operator interface that is available for the Microsoft Windows CE.NET operating system platform.

## System Requirements

	Product Series or Part Number	AS256-WR61	AS256-WD61	AS512-WR61	AS512-WD61	AS1500-WS61	AS1500-WR61
Type	S/W Scope	Win32 Lite	Win32 Lite	Win32 Lite Plus	Win32 Lite Plus	Local Interface	Local Interface
	Authorized Version	R	D	R	D	S	R
Overview	Development Tool OS	-	WinNT/2K/XP	-	WinNT/2K/XP	WinNT/2K/XP	-
	Runtime OS	WinNT/2K/XP	-	WinNT/2K/XP	-	WinNT/2K/XP	WinNT/2K/XP
Database	Application Tags	up to 256	up to 256	up to 512	up to 512	up to 1,500	up to 1,500
Communication	Drivers	only 2	only 2	only 2	only 2	3 by default	3 by default

	Product Series or Part Number	AS1500-WD61	AS4000-WS61	AS4000-WR61	AS1500-CD61	AS4000-CD61	WebLink	WebOIT
Type	S/W Scope	Development	Operator Workstation	Operator Workstation	Development for CE Runtime	Development for CE Runtime	CE Runtime	CE Runtime
	Authorized Version	D	S	R	D	D	R	R
Overview	Development Tool OS	WinNT/2K/XP	WinNT/2K/XP	-	WinNT/2K/XP	WinNT/2K/XP	-	-
	Runtime OS	-	WinNT/2K/XP	WinNT/2K/XP	-	-	WinCE	WinCE
Database	Application Tags	up to 1,500	up to 4,000	up to 4,000	up to 1,500	up to 4,000	up to 4,000	up to 4,000
Communication	Drivers	3 by default	5 by default	5 by default	only 3	up to 3	up to 3	up to 3

Legend	
Supported	✓
D	Determined by Development version only
R	Determined by Runtime version only
S	Suit version includes Development and Runtime versions

## Specifications

- **Pre-built Servers** Web Server, FTP Server, Telnet Server, Remote Access Server (RAS)
- **HMI Functions** 100+ built-in PLC drivers (up to 3 running simultaneously)
  - 8 simultaneous web clients
  - OPC Client and Server
  - Email (SMTP) Integration
  - Fully featured dynamic graphics with object library
  - Alarming, Trending, Reporting features
  - Scripting Language with 100+ standard functions
  - Recipes (ASCII and XML formats)
  - Remote project management including online editing
  - Multi-level security for use over Intranet and Internet

### System Requirements: Development Environment

- Microsoft Windows XP, 2000, NT 4.0 service pack 4 or higher
- Min. 256 MB of RAM. (512 MB Recommended)
- 100 MB of free hard-disk space for installation
- CD-ROM drive (for installation only)

### System Requirements: Runtime Environment

- Windows CE.Net
- Min. 64 MB of memory
- or
- Microsoft Windows 2000/XP/NT 4.0 with Service Pack 4 or higher
- Min. 32 MB of RAM. (64 MB Recommended)
- Web Browser that supports ActiveX objects

## Hardware Platforms Supported

- **ADAM-5550KWAS** 8-slot Programmable Automation Controller with KW & AS1500-CR60

## Applications

- Remote Utility Management
- Building Automation
- Water and Wastewater Management
- Factory Automation
- Machine Builder

## Ordering Information

### Suit Version

- **AS1500-WS61** AStudio V6.1 1500 tags Suite WinXP/2K/NT
- **AS4000-WS61** AStudio V6.1 4000 tags Suite WinXP/2K/NT

### Development Version

- **AS256-WD61** AStudio V6.1 256 tags Dev. WinXP/2K/NT
- **AS512-WD61** AStudio V6.1 512 tags Dev. WinXP/2K/NT
- **AS1500-WD61** AStudio V6.1 1500 tags Dev. WinXP/2K/NT
- **AS1500-CD61** AStudio V6.1 1500 tags Dev. WinCE
- **AS4000-CD61** AStudio V6.1 4000 tags Dev. WinCE

### Runtime Version

- **AS256-WR61** AStudio V6.1 256 tags Run. WinXP/2K/NT
- **AS512-WR61** AStudio V6.1 512 tags Run. WinXP/2K/NT
- **AS1500-WR61** AStudio V6.1 1500 tags Run. WinXP/2K/NT
- **AS4000-WR61** AStudio V6.1 4000 tags Run. WinXP/2K/NT

## Communication Drivers

<b>Advantech</b>	ADAM-4000, ADAM-5000/485, ADAM-6000
<b>AEG Schneider (Modicon Square D Telemecanique)</b>	AEG Compact PLC*, ModCon 984E*, Quantum Family
	ModCon 984E* Ethernet Quantum Ethernet Family
	MODBUS Plus compatible equipment
<b>Allen-Bradley</b>	Symax
	Family PLC2
	Family PLC5
	Family SLC500 Family 5000
<b>Cutler-Hammer</b>	D50*, D300
<b>GE-Fanuc</b>	Series 90, 90/30 CPU 341*
<b>Mitsubishi</b>	FX-232AW
<b>Omron</b>	C-series Rack PCs Sysmac way Host link units Sysmac C200H*
	E5CK/E5AF
<b>Phoenix</b>	Interbus Compatible
<b>Siemens</b>	S5 (PG port)
	S5/S7 3964R, S7 (MPI)
	Profibus DP Slave Compatible
	Profibus DP Master Compatible
	Profibus FMS Compatible
	S5-945 PG Port
<b>Yokogawa</b>	MXT521
	UT35
	HR2500E
	DA100
	UT37/UT38
	UT750, UP750, UT550, UT520, UP550, UT350, UT320, UM350, UM330, UP350
YS100	
<b>Modbus Ethernet</b>	Modbus/TCP
<b>Modbus</b>	RTU/ASCII
<b>OPC</b>	Server/Client

**Note:** Advantech Studio V6.1 supports more than 150 communication drivers for 3rd party devices from different manufacturers such as Omron, Allen-Bradley, Siemens, and many more.