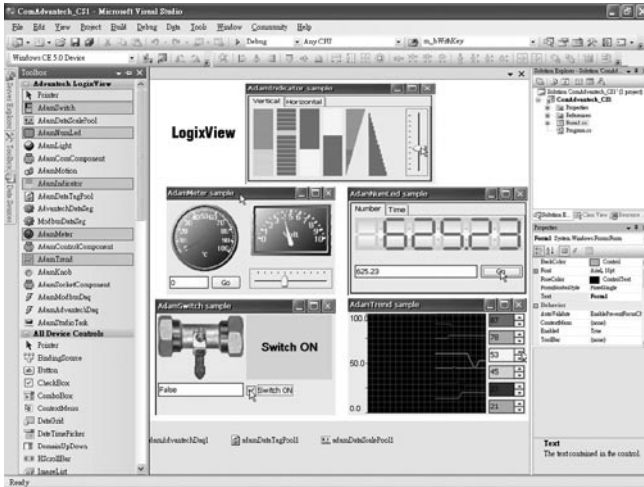


# LogixView

## HMI Development Kit based on Visual Studio



### Features

- Easy connection with ADAM I/O series
- Simply Drag and Drop the Components
- Less Coding and Reduce Loading
- Easy to Developing GUI
- Provide Several Components for Communication
- Support DAQ Components and Classes
- Multiple Graphic Controls
- Low Entry Level
- Support Modbus/RTU, Modbus/TCP, ADAM Protocol, and Local IO Module
- Support UNO, TPC, ADAM(WinCE Based Devices)

### Introduction

The LogixView is the latest software package for developing the graphic user interface for monitoring and controlling Advantech eAutomation products on WindowsCE based devices. This package is based on Microsoft .NET technology, and used in Visual Studio 2005 environment. The previous solution for Advantech .NET solution is the Adam.NET class library, and it supplies several class libraries for accessing ADAM series product. For those who want to use the Adam.NET class library still have to write more code to make their programs run. The LogixView is based on the Adam.NET technology, and offers more components for data acquisition. Users can simply drag and drop the components into Visual Studio .NET project and change the properties of the components to make their programs run as demands. In other word, users who use the LogixView no longer need to write code line by line for the data acquisition, but concentrate on program logic and event handling. In next few sections, this document is going to introduce installation process, the LogixView DAQ (Data Acquisition) components, the graphic controls, the working theory of the components and controls, and examples for applying LogixView package for building your programs in details.

### Specifications

#### System Requirements

- **CPU** Intel® Pentium® 400 MHz or higher
- **RAM** 256 MB Minimum
- **Disk Space** 10 MB Minimum
- **Display** VGA Resolution or Higher
- **Microsoft Compatible Mouse**
- **OS** Microsoft® Windows® 98, Windows NT 4.0 SP4 or above, Windows 2000, Window XP
- **Microsoft .NET Compact Framework Version 2.0 or Higher**
- **Microsoft Visual Studio 2005**

#### Supported Hardware

- **Modbus/RTU** Support ADAM-4000, ADAM-5000 series, Others
- **Modbus/TCP** Support ADAM-5000TCP, ADAM-6000 series, Others
- **Advantech ASCII** Support ADAM-4000, ADAM-5000 series
- **Advantech PAC** Support ADAM-5550

#### Feature Details

- **Less Coding and Reduce Loading**  
LogixView takes advantage of Microsoft's Windows graphical interface, offering fast and convenient configuration with drag and drop components. Users can finish a HMI control system in a short time.
- **Graphical User Interface**  
LogixView provides a lot of graphical components, allowing users to quickly create an intuitive operator interface. It has AdamSwitch, AdamDataScale, AdamNumLed, AdamLight, AdamComComponent, AdamMotion, AdamIndicator, AdamDataTagPool, AdamMeter, AdamTrend, AdamKnob and AdamStudioTask, etc.

#### Low Entry Level and Flexibility Expand

LogixView development environment allows you to simplify your system. Users don't need to know the skill of coding. He could develop the HMI system by a drag and drop way to achieve without any coding, but he also can expand the functionality of system by coding under the Visual Studio 2005.

#### DAQ Components and Classes

The LogixView offers several components for communication, data acquisition and scale, and task arrangement.

#### Easy Connection with ADAM I/O Series

Once you install LogixView software, you can immediately connect with ADAM-4000, ADAM-5000 I/O as a complete HMI control System. Current ADAM users can apply Modbus/RTU, Modbus/TCP and ADAM ASCII to access all ADAM-4000 modules and ADAM-5000 modules.

### Ordering Information

- **PCLS-LogixView10** HMI Development Kit based on Visual Studio