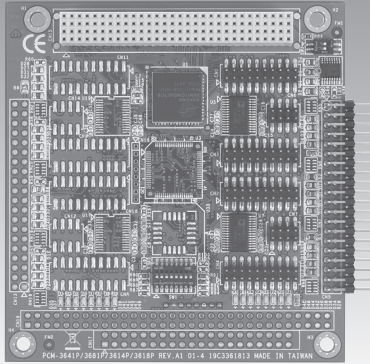


PCM-3614I/3618I PCM-3641I/3642I

4/8-port RS-232/422/485 PCI-104 Module
4/8-port RS-232 PCI-104 Module



PCM-3614I



Features

- Automatic RS-485 data flow control
- Shared IRQ settings for each ports
- LED indicators: TX, RX
- Standard PC ports: COM1, COM2, COM3, COM4 compatible
- Supports Windows 2000/XP
- Powerful and easy-to-use utility (ICOM Tools)

Specifications

General

- Card Interface** PCI-104
- Connectors** Pin header 40P
- Ports** 4 (PCM-3614I)
8 (PCM-3618I)
- Power Consumption** +5 V @ 450 mA

Communications

- Data Bits** 5, 6, 7, 8
- Data Signals** RS-422: RTxD+, TxD-, RxD+, RxD-, CTS+, CTS-, RTS+, RTS-
RS-485: DATA+, DATA-, CTS+, CTS-
- I/O Address Range** 0 x 000 ~ 0 x 3F8
- IRQ** 3, 4, 5, 6, 7, 9, 10, 11, 12, or 15
- Parity** Even, odd, or none
- Speed** 50 bps ~ 460.3 kbps
- Stop Bits** 1, 1.5, 2

Protection

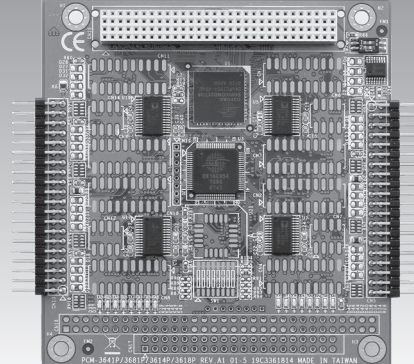
- EFT Surge Protection** 1000 V_{DC}
- Termination Resistor** 120 Ω

Environment

- Humidity (Operating)** 0 ~ 90 % RH
- Operating Temperature** 0 ~ 65° C (32 ~ 149° F)
- Storing Temperature** -25 ~ 80° C (-13 ~ 176° F)

Ordering Information

- PCM-3614I** 4-port RS-232/422/485 PCI-104 Module
- PCM-3618I** 8-port RS-232/422/485 PCI-104 Module



PCM-3642I



Features

- Transmission speeds up to 460 kbps
- Shared IRQ settings for each port
- Standard PC ports: COM1, COM2, COM3, COM4 compatible
- Supports Windows 2000/XP
- Powerful and easy-to-use utility (ICOM Tools)

Specifications

General

- Card Interface** PCI-104
- Connectors** Pin header 40P
- Ports** 4 (PCM-3641I)
8 (PCM-3642I)
- Power Consumption** +5 V @ 250 mA (Max.)

Communications

- Data Bits** 5, 6, 7, 8
- Data Signals** TxD, RxD, RTS, CTS, DTR, DSR, DCD, RI, GND
- I/O Address Range** 0 x 0200 ~ 0 x 03F8
- IRQ** 3, 4, 5, 6, 7, 9, 10, 11, 12, 15
- Parity** None, even and odd
- Speed** 50 bps ~ 460.3 kbps
- Stop Bits** 1, 1.5, 2

Protection

- EFT Surge Protection** 1000 V_{DC}
- Termination Resistor** 120 Ω

Environment

- Humidity (Operating)** 0 ~ 90 % RH
- Operating Temperature** 0 ~ 65° C (32 ~ 149° F) (IEC-68-1-1, 2)
- Storing Temperature** -25 ~ 80° C (-13 ~ 176° F)

Ordering Information

- PCM-3641I** 4-port RS-232 PCI-104 Module
- PCM-3642I** 8-port RS-232 PCI-104 Module