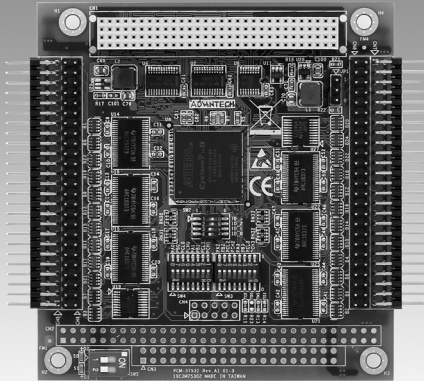


PCM-3753I

96-ch Digital I/O PCI-104 Module

NEW



Features

- 96 TTL digital I/O lines
- Emulates mode 0 of 8255 PPI
- Buffered circuits for higher driving capacity than 8255
- Multiple-source interrupt handling
- Output status read-back
- "Pattern match" and "Change of state" interrupt functions for critical I/O monitoring
- Keeps I/O setting and digital output values when hot system reset
- Supports dry contact and wet contact
- 50-pin box header

Introduction

PCM-3753I is a 96-bit digital I/O card for the PC-104 Plus bus. The card emulates mode 0 of the 8255 PPI chip, but the buffered circuits offer a higher driving capability than the 8255. The 96 I/O lines are divided into twelve 8-bit I/O ports: A0, B0, C0, A1, B1, C1, A2, B2, C2, A3, B3 and C3. You can configure each port as input or output via software.

Specifications

Digital Input/Output

- **I/O Channels** 96
- **Programming Mode** 8255 PPI mode 0
- **Compatibility** 5 V/TTL
- **Input Voltage** Logic 0: 0.8 V max.
Logic 1: 2.0 V min.
- **Output Voltage** Logic 0: 0.44 V max.
Logic 1: 3.76 V min.
- **Output Capability** Sink: 0.44 V max. @ 24 mA
Source: 3.76 V min. @ 24 mA

General

- **Bus Type** PCI-104
- **I/O Connector** 50-pin box header x 4
- **Dimensions (L x H)** 96 x 90mm (3.8" x 3.5")
- **Power Consumption** Typical: +5 V @ 400 mA
Max: +5 V @ 2.7 A
- **Operating Temperature** 0 ~ 60° C (32 ~ 140° F) (refer to IEC 68-2-1, 2)
- **Storing Temperature** -20 ~ 70° C (-4 ~ 158° F) (refer to IEC 68-2-3)
- **Storing Humidity** 5 ~ 95% RH, non-condensing

Ordering Information

- **PCM-3753I** 96-ch Digital I/O PCI-104 Module
- **ADAM-3950** 50-pin flat cable wiring terminal for DIN-Rail mounting
- **PCLD-785B** 24-ch Relay Output Board
- **PCLD-782B** 24-ch Opto-isolated DI Board
- **PCL-10150-1.2** 50-pin flat cable, 1.2 m