

1

2

3

4

REV. ECN NO.

00 -----

A

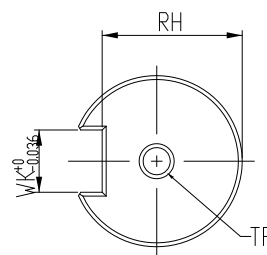
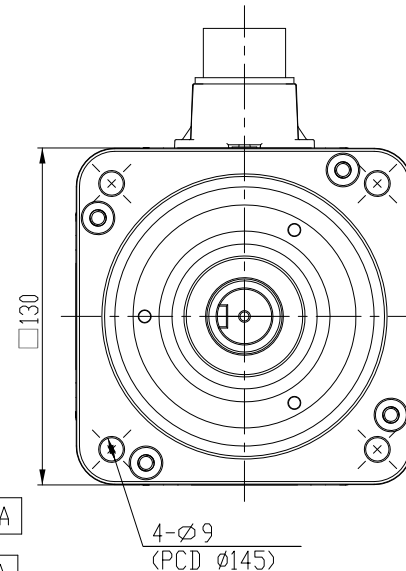
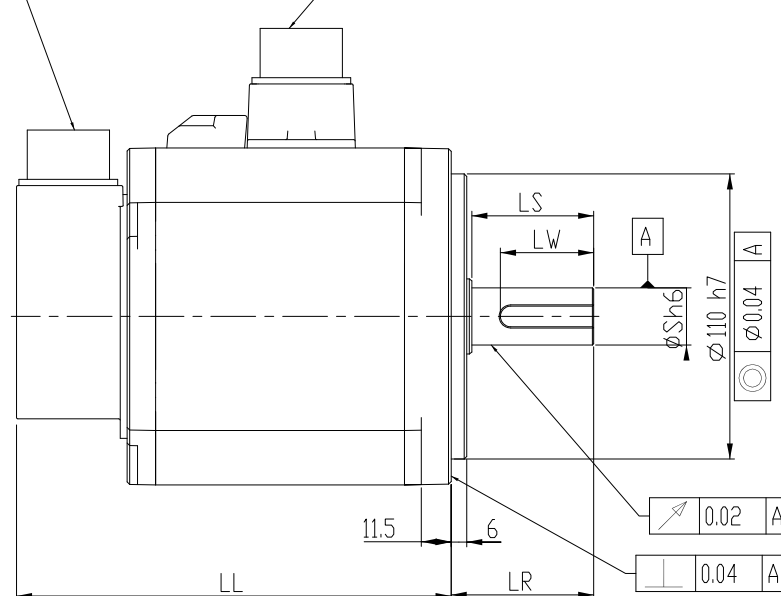
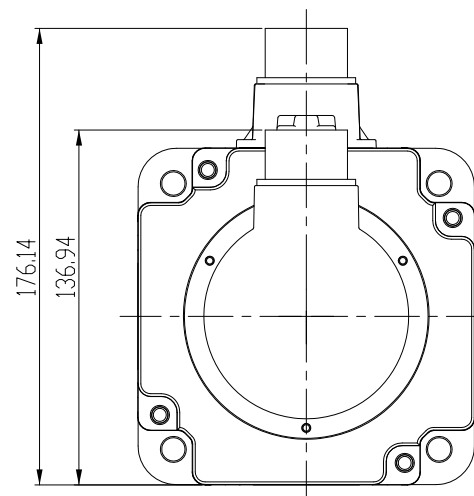
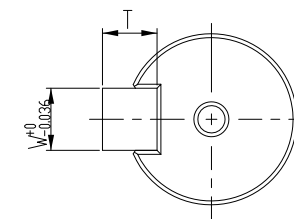
A

B

B


C

C

ENCODER CONNECTOR
MS3102A20-29PMOTOR CONNECTOR
MS3102A20-18PSHAFT END DETAILS
SCALE 1.500KEY DETAILS
SCALE 1.500

DIMENSION TABLE (MODEL WITH BRAKE)

MODEL	LL	LR	LS	S	LW	WK	W	T	RH	TP
ECMA-L11305S9	183.2	55	47	19	25	6	6	6	15.5	M6;Depth20

 台灣電子工業股份有限公司 DELTA ELECTRONICS, INC.		DRAWN:	DESIGN:	
APPROVE:		DATE: 12/21/2015		
THESE DRAWINGS AND SPECIFICATIONS ARE THE PROPERTY OF DELTA ELECTRONICS, INC. AND SHALL NOT BE REPRODUCED OR USED AS THE BASIS FOR THE MANUFACTURE OR SELL OF APPARATUS OR DEVICES WITHOUT PERMISSION.		DIMENSIONAL TOLERANCES		
		DECIMALS () () () () ANGLES ()		
		X ±0.3 >50~100 ±0.15 >100~200 ±0.2 >200~ ±0.25 >200~ ±0.25 >200~ ±0.25 >200~ ±0.3		
DESCRIPTION: CONFIDENTIAL ECMA-L11305S9		PART NO.:		REV.
USED ON	UNIT mm	SCALE 0.500	SHEET 1 OF 1	

1

2

3

4

Rated Spec.	Motor Model	Symbol	Unit	ECMA-L11305
	Rated Power	R _R	kW	0.5
	Rated Voltage	V _R	V	380
	Rated Torque	T _R	N.m	3.18
	Rated Speed	N _R	r/min	1500
	Rated Current	I _R	A	2.25
	Rated Power Rate	Q _R	k W/s	7.72
	---Model with Brake	Q _R	k W/s	7.02
Motor Spec.	Continuous Stall Torque	T _S	N.m	3.18
	Instantaneous Maximum Torque	T _P	N.m	8.92
	Maximum Rotating Speed	Nmax	r/min	3000
	Instantaneous Maximum Current	I _P	A	6.3
	Induced Phase Voltage Constant	K _E	mv/(r/min)	55.30
	Torque Constant	K _T	N.m/A	1.41
	Rotor Moment of Inertia	J _M	x10 ⁻⁴ kg.m ²	13.1
	---Model with Brake	J _M	x10 ⁻⁴ kg.m ²	14.4
	Phase Armature Resistance	Rφ	Ω	1.414
	Phase Armature Inductance	Lφ	m H	20.00
	Mechanical Time Constant	t _m	ms	2.48
	---Model with Brake	t _m	ms	2.73
	Electrical Time Constant	t _e	ms	14.14
	Insulation Resistance	-	-	>100MΩ DC500V
	Dielectric Strength	-	-	2300V AC,1 seconds
	Maximum Radial Shaft Load	-	N	490
	Maximum Axial Shaft Load	-	N	98
	Vibration Grade	-	-	V15
	Mass	W	kg	6.8
	---Model with Brake	W	kg	8.2
	T-N Curve	-	-	Figure 1
Enviroment Spec.	Maximum Winding Temperature	-	℃	130
	Operating Temperature	Top	℃	0~40
	Storage Temperature	Tst	℃	-10~80
	Operating Humidity	-	%RH	20~90
	Storage Humidity	-	%RH	20~90
	Enclosure Type	-	-	IP65
	Vibration Resistance	-	-	2.5G

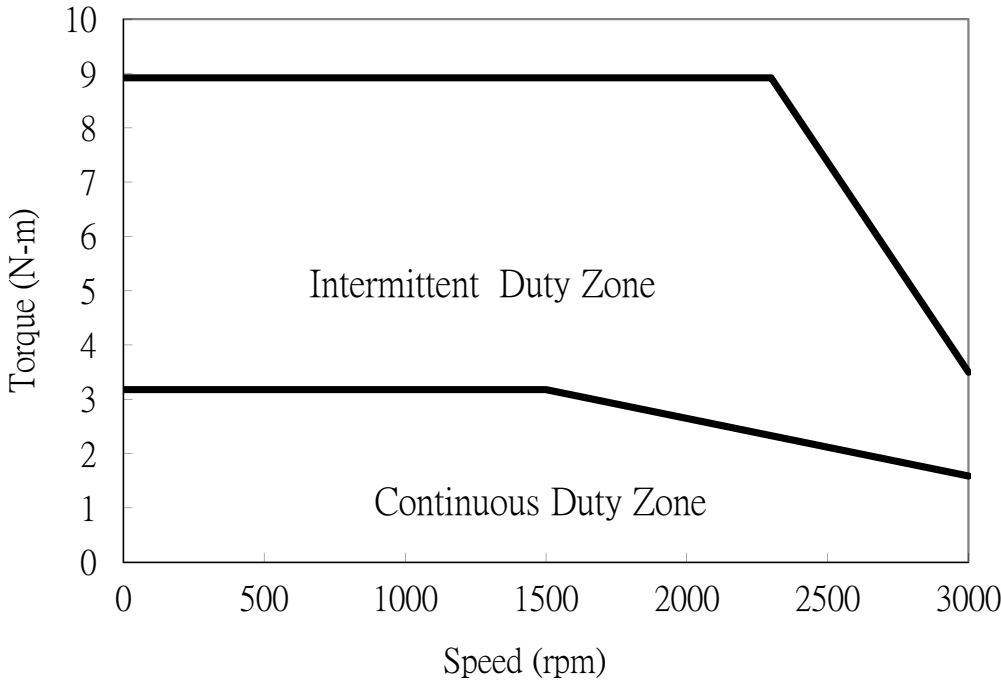


Fig. 1 T-N Curve



THESE DRAWINGS AND SPECIFICATIONS ARE THE PROPERTY OF DELTA ELECTRONICS, INC. AND SHALL NOT BE REPRODUCED OR USED AS THE BASIS FOR THE MANUFACTURE OR SELL OF APPARATUSES OR DEVICES WITHOUT PERMISSION.

DIMENSIONAL TOLERANCES

()	()	()	()	ANGLES				
DECIMALS	<50	±0.1	<50	±0.15	<50	±0.2	<30°	±0.1°
X	±0.3	>50~100	±0.15	>50~100	±0.2	>50~100	±0.25	>30°~60° ±0.3°
XX	±0.2	>100~200	±0.2	>100~200	±0.25	>100~200	±0.3	>60°~90° ±0.5°
XXX	±0.1	>200~	±0.2%	>200~	±0.25%	>200~	±0.3%	

DRAWN: 徐雍智

DESIGN: 徐雍智

APPROVE:

DATE: #####

DESCRIPTION CONFIDENTIAL

ECMA-L11305

PART NO.

REV.

2