

1. Safety Instructions

- To ensure sufficient convection cooling, always maintain a safety distance of 20mm from all ventilated surfaces while the device is in operation.
- The device is not recommended to be placed on low thermal conductive surface, for example, plastics.
- For safety reason, please ensure the mounted device is kept at $\geq 4\text{mm}$ safety distance at all sides from other components and equipments (Refer to Fig. 5).
- Note that the enclosure of the device can become very hot depending on the ambient temperature and load of the power supply. Do not touch the device while it is in operation or immediately after power is turned OFF. Risk of burning!
- Do not touch the terminals while power is being supplied. Risk of electric shock.
- Prevent any foreign metal, particles or conductors to enter the device through the openings during installation. It can cause: - Electric shock; Safety Hazard; Fire; Product failure.
- Warning: When connecting the device, secure Earth connection before connecting L and N. When disconnecting the device, remove L and N connections before removing the Earth connection. The power supply must be mounted by metal screws onto a grounded metal surface. It is highly recommended that the Earth terminal on the connector be connected to the grounded metal surface.

2. Device Descriptions

Refer to Fig. 1.:

- ① Input & Output terminal block connector
- ② DC voltage adjustment potentiometer
- ③ DC OK control LED (Green)

3. Installation of the Device

Refer to Fig. 2.:

- (A) Mounting holes for power supply assembly onto the mounting surface. Power supply shall be mounted on minimum 2 mounting holes using M3 screw minimum 5mm length.
- (B) This surface belongs to customer's end system or panel where the power supply is mounted.
- (C) Connector

- Use flexible cable (stranded or solid), AWG no. 22-12. The torque at the Connector shall not exceed 13Kgf.cm. The insulation stripping length should not exceed 0.275" or 7mm (Refer to Fig. 3).

4. Installation of Mounting Accessories

- Only use M3 screw $\leq 6\text{mm}$ through the base mounting holes. This is to keep a safe distance between the screw and internal components.
 - Refer to Fig. 4.:
- Recommended mounting tightening torque: 4~7Kgf.cm

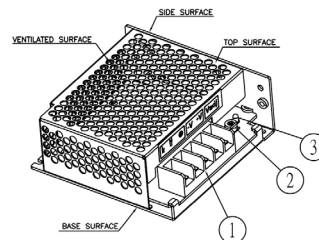
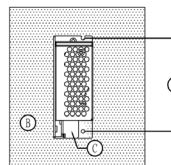
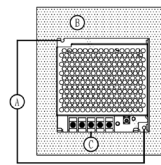


Fig. 1. Device Descriptions

Side Mounting (Vertical)



Base Mounting (Vertical)



Side Mounting (Horizontal)

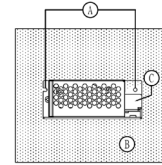
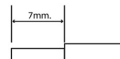


Fig. 2. Mounting Orientation



Lug



Stripped wire

Fig. 3. Wire Type

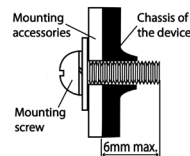


Fig. 4. Mounting Screw

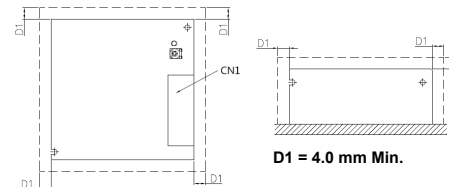


Fig. 5. Assembly Reference

1. Safety Instructions

- To ensure sufficient convection cooling, always maintain a safety distance of 20mm from all ventilated surfaces while the device is in operation.
- The device is not recommended to be placed on low thermal conductive surface, for example, plastics.
- For safety reason, please ensure the mounted device is kept at $\geq 4\text{mm}$ safety distance at all sides from other components and equipments (Refer to Fig. 5).
- Note that the enclosure of the device can become very hot depending on the ambient temperature and load of the power supply. Do not touch the device while it is in operation or immediately after power is turned OFF. Risk of burning!
- Do not touch the terminals while power is being supplied. Risk of electric shock.
- Prevent any foreign metal, particles or conductors to enter the device through the openings during installation. It can cause: - Electric shock; Safety Hazard; Fire; Product failure.
- Warning: When connecting the device, secure Earth connection before connecting L and N. When disconnecting the device, remove L and N connections before removing the Earth connection. The power supply must be mounted by metal screws onto a grounded metal surface. It is highly recommended that the Earth terminal on the connector be connected to the grounded metal surface.

2. Device Descriptions

Refer to Fig. 1.:

- ① Input & Output terminal block connector
- ② DC voltage adjustment potentiometer
- ③ DC OK control LED (Green)

3. Installation of the Device

Refer to Fig. 2.:

- (A) Mounting holes for power supply assembly onto the mounting surface. Power supply shall be mounted on minimum 2 mounting holes using M3 screw minimum 5mm length.
- (B) This surface belongs to customer's end system or panel where the power supply is mounted.
- (C) Connector

- Use flexible cable (stranded or solid), AWG no. 22-12. The torque at the Connector shall not exceed 13Kgf.cm. The insulation stripping length should not exceed 0.275" or 7mm (Refer to Fig. 3).

4. Installation of Mounting Accessories

- Only use M3 screw $\leq 6\text{mm}$ through the base mounting holes. This is to keep a safe distance between the screw and internal components.
 - Refer to Fig. 4.:
- Recommended mounting tightening torque: 4~7Kgf.cm

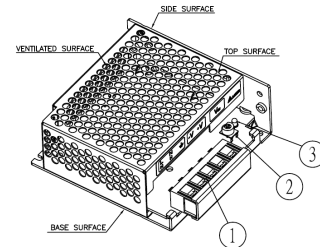
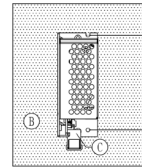
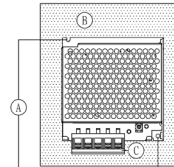


Fig. 1. Device Descriptions

Side Mounting (Vertical)



Base Mounting (Vertical)



Side Mounting (Horizontal)

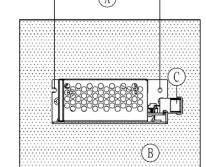
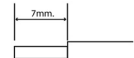


Fig. 2. Mounting Orientation



Lug



Stripped wire

Fig. 3. Wire Type

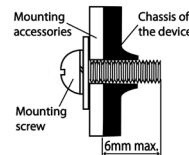


Fig. 4. Mounting Screw

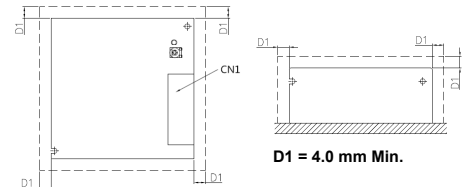


Fig. 5. Assembly Reference

1. Safety Instructions

- To ensure sufficient convection cooling, always maintain a safety distance of 20mm from all ventilated surfaces while the device is in operation.
- The device is not recommended to be placed on low thermal conductive surface, for example, plastics.
- For safety reason, please ensure the mounted device is kept at $\geq 4\text{mm}$ safety distance at all sides from other components and equipments (Refer to Fig. 4).
- Note that the enclosure of the device can become very hot depending on the ambient temperature and load of the power supply. Do not touch the device while it is in operation or immediately after power is turned OFF. Risk of burning!
- Do not touch the terminals while power is being supplied. Risk of electric shock.
- Prevent any foreign metal, particles or conductors to enter the device through the openings during installation. It can cause: - Electric shock; Safety Hazard; Fire; Product failure.
- Warning: The power supply must be mounted by metal screws onto a grounded metal surface. It is highly recommended that the Earth terminal on the connector be connected to the grounded metal surface.

2. Device Descriptions

Refer to Fig. 1.:

- ① Input & Output terminal block connector
- ② DC voltage adjustment potentiometer
- ③ DC OK control LED (Green)

3. Installation of the Device

Refer to Fig. 2.:

- (A) Mounting holes for power supply assembly onto the mounting surface. Power supply shall be mounted on minimum 2 mounting holes using M3 screw minimum 5mm length.
- (B) This surface belongs to customer's end system or panel where the power supply is mounted.
- (C) Connector

- Use flexible cable (stranded or solid), AWG no. 22-18.

| | Connector (Board Mounting) | Housing | Terminal |
|--------------|----------------------------|---------|--------------|
| Input (JST) | B3P5-VH(LF)(SN) | VHR-5N | SVH-21T-P1.1 |
| Output (JST) | B2P3-VH(LF)(SN) | VHR-3N | |

4. Installation of Mounting Accessories

- Only use M3 screw $\leq 6\text{mm}$ through the base mounting holes. This is to keep a safe distance between the screw and internal components.
 - Refer to Fig. 4.:
- Recommended mounting tightening torque: 4~7Kgf.cm

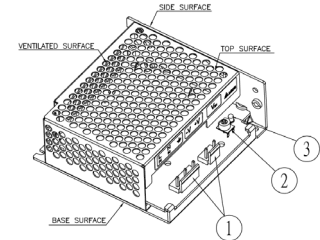
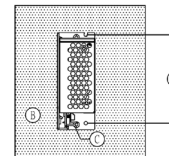
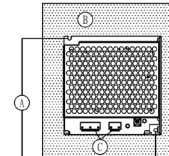


Fig. 1. Device Descriptions

Side Mounting (Vertical)



Base Mounting (Vertical)



Side Mounting (Horizontal)

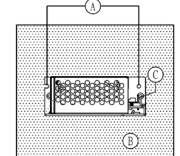


Fig. 2. Mounting Orientation

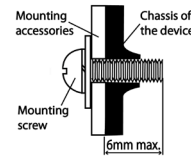


Fig. 3. Mounting Screw

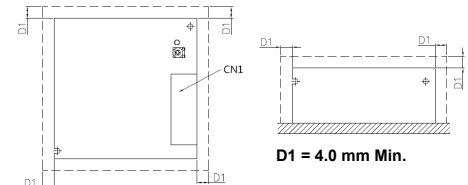


Fig. 4. Assembly Reference

1. 安全规范

- 与通风表面保持至少 20mm 的安全距离，以确保对流冷却充分。
- 本产品不适合摆放在低热导体，例如：塑胶。
- 本产品安装完成后，周围设备必须与本产品保持至少 4mm 的距离以满足安全规范（请参考图五）。
- 受环境温度及产品负载的影响，本机外壳温度会很高，因此在上电时或切断电源后短时间内不要触摸本机，以免烫伤。
- 请勿在上电时触摸连接端子，以防电击危险。
- 安装过程中，应避免金属元件或金属导体通过空隙或通风孔进入到产品内，否则会引起下列状况。
— 电击；安全危害；火灾；产品异常
- 警告：**在连接产品电源供应时，产品必须先接地然后才接 L 和 N。当要解开电源供应时，必须先把 L 和 N 解开然后才把接地解开。安装时，电源供应器之铁壳必须以金属螺丝锁附于固定面，该固定面必须为金属材料并与电源主接地连接。并建议输入接地端子连接至电源主接地。

2. 产品外观介绍

依据图一：

- ① 输入/输出连接端子
- ② 直流电压调节电位器
- ③ 直流电控制 OK 指示灯 (绿色)

3. 产品固定方式

依据图二：

- Ⓐ 在把产品安装在固定表面时，将螺丝锁入此固定孔。产品应该用长度至少 5mm 的 M3 螺丝锁入至少两个固定孔。
- Ⓑ 此固定表面为客户系统表面。
- Ⓒ 输入/输出连接端子。

- 电线的设计可使用多股或实心，AWG no. 22-12。扭矩不应该超过 13Kgf.cm 剥线的长度不应该超过 0.275" 或者 7mm (依据图三)。

4. 配件组合安装

- 在把配件装上产品时，请使用长度不超过 6mm 的 M3 螺丝锁入产品底面的固定孔。这是为了确保螺丝和内部元件间有足够的绝缘距离。
- 依据图四：
建议配件固定螺丝扭矩为 4~7Kgf.cm

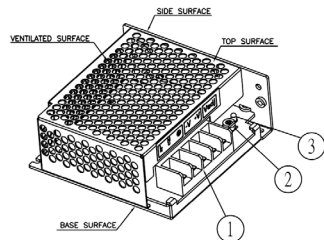
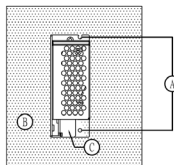
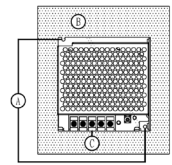


Fig. 1. Device Descriptions

Side Mounting (Vertical)



Base Mounting (Vertical)



Side Mounting (Horizontal)

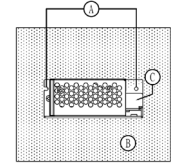


Fig. 2. Mounting Orientation



Lug



Stripped wire

Fig. 3. Wire Type

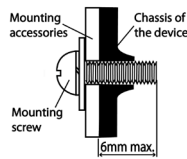


Fig. 4. Mounting Screw

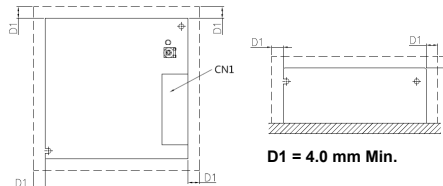


Fig. 5. Assembly Reference

1. 安全规范

- 与通风表面保持至少 20mm 的安全距离，以确保对流冷却充分。
- 本产品不适合摆放在低热导体，例如：塑胶。
- 本产品安装完成后，周围设备必须与本产品保持至少 4mm 的距离以满足安全规范（请参考图五）。
- 受环境温度及产品负载的影响，本机外壳温度会很高，因此在上电时或切断电源后短时间内不要触摸本机，以免烫伤。
- 请勿在上电时触摸连接端子，以防电击危险。
- 安装过程中，应避免金属元件或金属导体通过空隙或通风孔进入到产品内，否则会引起下列状况。
— 电击；安全危害；火灾；产品异常
- 警告：**在连接产品电源供应时，产品必须先接地然后才接 L 和 N。当要解开电源供应时，必须先把 L 和 N 解开然后才把接地解开。安装时，电源供应器之铁壳必须以金属螺丝锁附于固定面，该固定面必须为金属材料并与电源主接地连接。并建议输入接地端子连接至电源主接地。

2. 产品外观介绍

依据图一：

- ① 输入/输出连接端子
- ② 直流电压调节电位器
- ③ 直流电控制 OK 指示灯 (绿色)

3. 产品固定方式

依据图二：

- Ⓐ 在把产品安装在固定表面时，将螺丝锁入此固定孔。产品应该用长度至少 5mm 的 M3 螺丝锁入至少两个固定孔。
- Ⓑ 此固定表面为客户系统表面。
- Ⓒ 输入/输出连接端子。

- 电线的设计可使用多股或实心，AWG no. 22-12。扭矩不应该超过 13Kgf.cm 剥线的长度不应该超过 0.275" 或者 7mm (依据图三)。

4. 配件组合安装

- 在把配件装上产品时，请使用长度不超过 6mm 的 M3 螺丝锁入产品底面的固定孔。这是为了确保螺丝和内部元件间有足够的绝缘距离。
- 依据图四：
建议配件固定螺丝扭矩为 4~7Kgf.cm

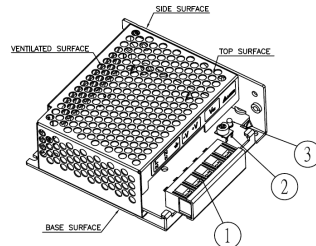
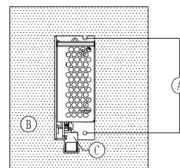
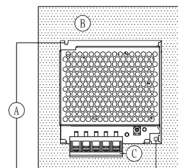


Fig. 1. Device Descriptions

Side Mounting (Vertical)



Base Mounting (Vertical)



Side Mounting (Horizontal)

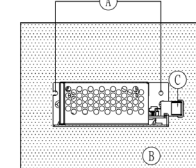
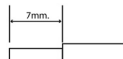


Fig. 2. Mounting Orientation



Lug



Stripped wire

Fig. 3. Wire Type

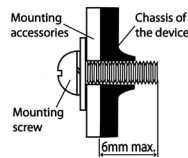


Fig. 4. Mounting Screw

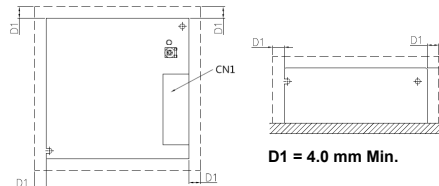


Fig. 5. Assembly Reference

1. 安全规范

- 与通风表面保持至少 20mm 的安全距离，以确保对流冷却充分。
- 本产品不适合摆放在低热导体，例如：塑胶。
- 本产品安装完成后，周围设备必须与本产品保持至少 4mm 的距离以满足安全规范（请参考图四）。
- 受环境温度及产品负载的影响，本机外壳温度会很高，因此在上电时或切断电源后短时间内不要触摸本机，以免烫伤。
- 请勿在上电时触摸连接端子，以防电击危险。
- 安装过程中，应避免金属元件或金属导体通过空隙或通风孔进入到产品内，否则会引起下列状况。
— 电击；安全危害；火灾；产品异常
- 警告：安装时，电源供应器之铁壳必须以金属螺丝锁附于固定面，该固定面必须为金属材质并与电源主接地连接。并建议输入接地端子连接至电源主接地。

2. 产品外观介绍

依据图一：

- ① 输入/输出连接端子
- ② 直流电压调节电位器
- ③ 直流电控制 OK 指示灯（绿色）

3. 产品固定方式

依据图二：

- (A) 在把产品安装在固定表面时，将螺丝锁入此固定孔。产品应该用长度至少 5mm 的 M3 螺丝锁入至少两个固定孔。
- (B) 此固定表面为客户系统表面。
- (C) 输入/输出连接端子。

- 电线的设计可使用 AWG no. 22-18。建议使用之 Housing and Terminal（请参考 Tab.1）。

| | Connector (Board Mounting) | Housing | Terminal |
|--------------|----------------------------|---------|--------------|
| Input (JST) | B3P5-VH(LF)(SN) | VHR-5N | SVH-21T-P1.1 |
| Output (JST) | B2P3-VH(LF)(SN) | VHR-3N | |

4. 配件组合安装

- 在把配件装上产品时，请使用长度不超过 6mm 的 M3 螺丝锁入产品底面的固定孔。这是为了确保螺丝和内部元件间有足够的绝缘距离。
- 依据图三：
建议配件固定螺丝扭矩为 4~7Kgf.cm

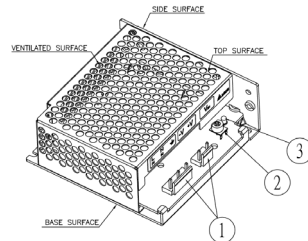
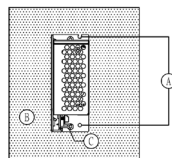
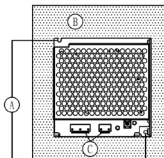


Fig. 1. Device Descriptions

Side Mounting (Vertical)



Base Mounting (Vertical)



Side Mounting (Horizontal)

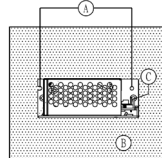


Fig. 2. Mounting Orientation

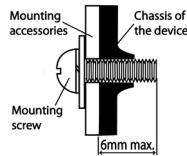


Fig. 3. Mounting Screw

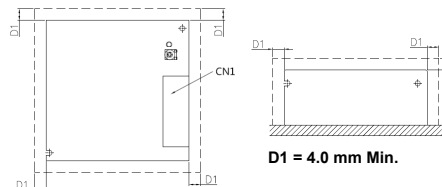


Fig. 4. Assembly Reference

1. Safety Instructions

- To ensure sufficient convection cooling, always maintain a safety distance of 20mm from all ventilated surfaces while the device is in operation.
- The device is not recommended to be placed on low thermal conductive surface, for example, plastics.
- For safety reason, please ensure the mounted device is kept at $\geq 4\text{mm}$ safety distance at all sides from other components and equipments (Refer to Fig. 5).
- Note that the enclosure of the device can become very hot depending on the ambient temperature and load of the power supply. Do not touch the device while it is in operation or immediately after power is turned OFF. Risk of burning!
- Do not touch the terminals while power is being supplied. Risk of electric shock.
- Prevent any foreign metal, particles or conductors to enter the device through the openings during installation. It can cause: - Electric shock; Safety Hazard; Fire; Product failure.
- Warning: When connecting the device, secure Earth connection before connecting L and N. When disconnecting the device, remove L and N connections before removing the Earth connection. The power supply must be mounted by metal screws onto a grounded metal surface. It is highly recommended that the Earth terminal on the connector be connected to the grounded metal surface.

2. Device Descriptions

Refer to Fig. 1.:

- ① Input & Output terminal block connector
- ② DC voltage adjustment potentiometer
- ③ DC OK control LED (Green)

3. Installation of the Device

Refer to Fig. 2.:

- (A) Mounting holes for power supply assembly onto the mounting surface. Power supply shall be mounted on minimum 2 mounting holes using M3 screw minimum 5mm length.
- (B) This surface belongs to customer's end system or panel where the power supply is mounted.
- (C) Connector

- Use flexible cable (stranded or solid), AWG no. 22-12. The torque at the Connector shall not exceed 13Kgf.cm. The insulation stripping length should not exceed 0.275" or 7mm (Refer to Fig. 3).

4. Installation of Mounting Accessories

- Only use M3 screw $\leq 6\text{mm}$ through the base mounting holes. This is to keep a safe distance between the screw and internal components.
 - Refer to Fig. 4.:
- Recommended mounting tightening torque: 4~7Kgf.cm

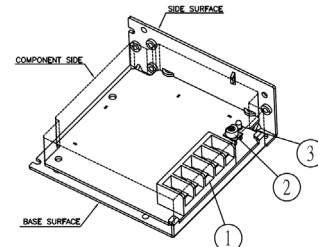
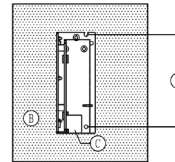
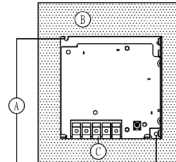


Fig. 1. Device Descriptions

Side Mounting (Vertical)



Base Mounting (Vertical)



Side Mounting (Horizontal)

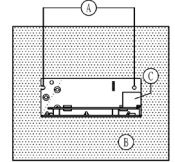
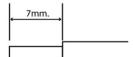


Fig. 2. Mounting Orientation



Lug



Stripped wire

Fig. 3. Wire Type

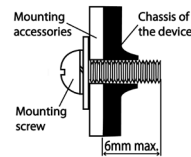


Fig. 4. Mounting Screw

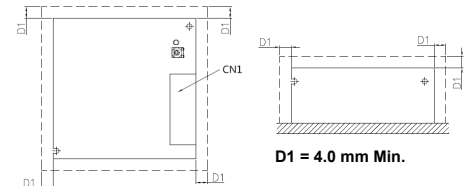


Fig. 5. Assembly Reference

1. Safety Instructions

- To ensure sufficient convection cooling, always maintain a safety distance of 20mm from all ventilated surfaces while the device is in operation.
- The device is not recommended to be placed on low thermal conductive surface, for example, plastics.
- For safety reason, please ensure the mounted device is kept at $\geq 4\text{mm}$ safety distance at all sides from other components and equipments (Refer to Fig. 5).
- Note that the enclosure of the device can become very hot depending on the ambient temperature and load of the power supply. Do not touch the device while it is in operation or immediately after power is turned OFF. Risk of burning!
- Do not touch the terminals while power is being supplied. Risk of electric shock.
- Prevent any foreign metal, particles or conductors to enter the device through the openings during installation. It can cause: - Electric shock; Safety Hazard; Fire; Product failure.
- Warning: When connecting the device, secure Earth connection before connecting L and N. When disconnecting the device, remove L and N connections before removing the Earth connection. The power supply must be mounted by metal screws onto a grounded metal surface. It is highly recommended that the Earth terminal on the connector be connected to the grounded metal surface.

2. Device Descriptions

Refer to Fig. 1.:

- ① Input & Output terminal block connector
- ② DC voltage adjustment potentiometer
- ③ DC OK control LED (Green)

3. Installation of the Device

Refer to Fig. 2.:

- (A) Mounting holes for power supply assembly onto the mounting surface. Power supply shall be mounted on minimum 2 mounting holes using M3 screw minimum 5mm length.
- (B) This surface belongs to customer's end system or panel where the power supply is mounted.
- (C) Connector

- Use flexible cable (stranded or solid), AWG no. 22-12. The torque at the Connector shall not exceed 13Kgf.cm. The insulation stripping length should not exceed 0.275" or 7mm (Refer to Fig. 3).

4. Installation of Mounting Accessories

- Only use M3 screw $\leq 6\text{mm}$ through the base mounting holes. This is to keep a safe distance between the screw and internal components.
 - Refer to Fig. 4.:
- Recommended mounting tightening torque: 4~7Kgf.cm

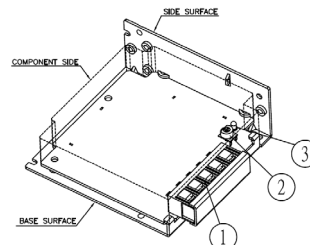
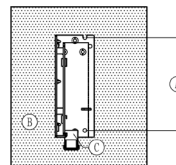
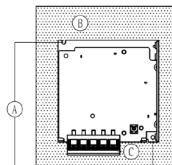


Fig. 1. Device Descriptions

Side Mounting (Vertical)



Base Mounting (Vertical)



Side Mounting (Horizontal)

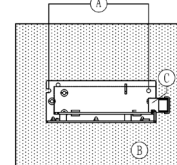
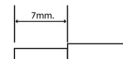


Fig. 2. Mounting Orientation



Lug



Stripped wire

Fig. 3. Wire Type

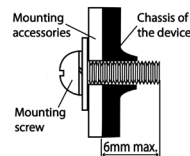


Fig. 4. Mounting Screw

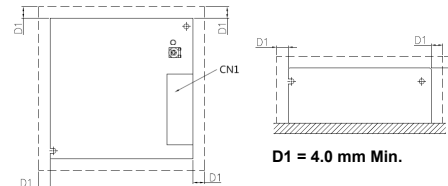


Fig. 5. Assembly Reference

1. Safety Instructions

- To ensure sufficient convection cooling, always maintain a safety distance of 20mm from all ventilated surfaces while the device is in operation.
- The device is not recommended to be placed on low thermal conductive surface, for example, plastics.
- For safety reason, please ensure the mounted device is kept at $\geq 4\text{mm}$ safety distance at all sides from other components and equipments (Refer to Fig. 4).
- Note that the enclosure of the device can become very hot depending on the ambient temperature and load of the power supply. Do not touch the device while it is in operation or immediately after power is turned OFF. Risk of burning!
- Do not touch the terminals while power is being supplied. Risk of electric shock.
- Prevent any foreign metal, particles or conductors to enter the device through the openings during installation. It can cause: - Electric shock; Safety Hazard; Fire; Product failure.
- Warning: When connecting the device, secure Earth connection before connecting L and N. When disconnecting the device, remove L and N connections before removing the Earth connection. The power supply must be mounted by metal screws onto a grounded metal surface. It is highly recommended that the Earth terminal on the connector be connected to the grounded metal surface.

2. Device Descriptions

Refer to Fig. 1.:

- ① Input & Output terminal block connector
- ② DC voltage adjustment potentiometer
- ③ DC OK control LED (Green)

3. Installation of the Device

Refer to Fig. 2.:

- (A) Mounting holes for power supply assembly onto the mounting surface. Power supply shall be mounted on minimum 2 mounting holes using M3 screw minimum 5mm length.
 - (B) This surface belongs to customer's end system or panel where the power supply is mounted.
 - (C) Connector
- Use flexible cable (stranded or solid), AWG no. 22-18.

| | Connector (Board Mounting) | Housing | Terminal |
|--------------|----------------------------|---------|--------------|
| Input (JST) | B3P5-VH(LF)(SN) | VHR-5N | SVH-21T-P1.1 |
| Output (JST) | B2P3-VH(LF)(SN) | VHR-3N | |

4. Installation of Mounting Accessories

- Only use M3 screw $\leq 6\text{mm}$ through the base mounting holes. This is to keep a safe distance between the screw and internal components.
- Refer to Fig. 3.:

Recommended mounting tightening torque: 4~7Kgf.cm

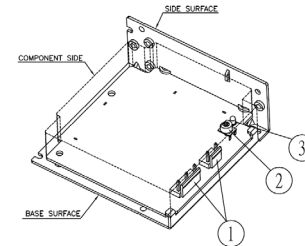
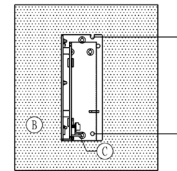
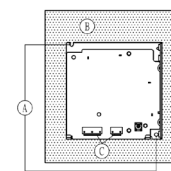


Fig. 1. Device Descriptions

Side Mounting (Vertical)



Base Mounting (Vertical)



Side Mounting (Horizontal)

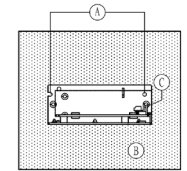


Fig. 2. Mounting Orientation

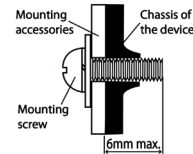


Fig. 3. Mounting Screw

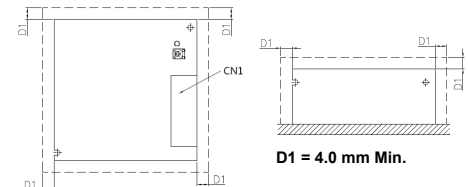


Fig. 4. Assembly Reference

1. 安全规范

- 与通风表面保持至少 20mm 的安全距离，以确保对流冷却充分。
- 本产品不适合摆放在低热导体，例如：塑胶。
- 本产品安装完成后，周围设备必须与本产品保持至少 4mm 的距离以满足安全规范（请参考图五）。
- 受环境温度及产品负载的影响，本机外壳温度会很高，因此在上电时或切断电源后短时间内不要触摸本机，以免烫伤。
- 请勿在上电时触摸连接端子，以防电击危险。
- 安装过程中，应避免金属元件或金属导体通过空隙或通风孔进入到产品内，否则会引起下列状况。
— 电击；安全危害；火灾；产品异常
- 警告：**在连接产品电源供应时，产品必须先接地然后才接 L 和 N。当要解开电源供应时，必须先把 L 和 N 解开然后才把接地解开。安装时，电源供应器之铁壳必须以金属螺丝锁附于固定面，该固定面必须为金属材料并与电源主接地连接。并建议输入接地端子连接至电源主接地。

2. 产品外观介绍

依据图一：

- ① 输入/输出连接端子
- ② 直流电压调节电位器
- ③ 直流电控制 OK 指示灯 (绿色)

3. 产品固定方式

依据图二：

- Ⓐ 在把产品安装在固定表面时，将螺丝锁入此固定孔。产品应该用长度至少 5mm 的 M3 螺丝锁入至少两个固定孔。
- Ⓑ 此固定表面为客户系统表面。
- Ⓒ 输入/输出连接端子。

- 电线的设计可使用多股或实心，AWG no. 22-12。扭矩不应该超过 13Kgf.cm 剥线的长度不应该超过 0.275" 或者 7mm (依据图三)。

4. 配件组合安装

- 在把配件装上产品时，请使用长度不超过 6mm 的 M3 螺丝锁入产品底面的固定孔。这是为了确保螺丝和内部元件间有足够的绝缘距离。
- 依据图四：
建议配件固定螺丝扭矩为 4~7Kgf.cm

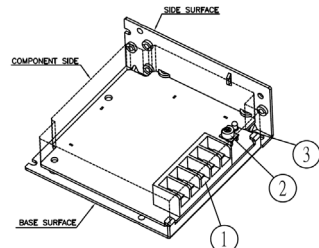
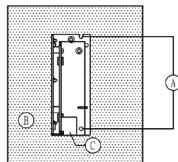
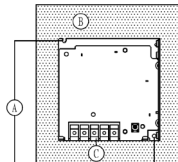


Fig. 1. Device Descriptions

Side Mounting (Vertical)



Base Mounting (Vertical)



Side Mounting (Horizontal)

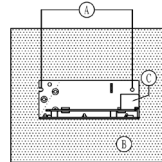
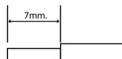


Fig. 2. Mounting Orientation



Lug



Stripped wire

Fig. 3. Wire Type

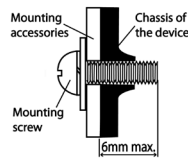


Fig. 4. Mounting Screw

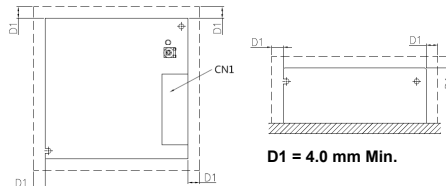


Fig. 5. Assembly Reference

1. 安全规范

- 与通风表面保持至少 20mm 的安全距离，以确保对流冷却充分。
- 本产品不适合摆放在低热导体，例如：塑胶。
- 本产品安装完成后，周围设备必须与本产品保持至少 4mm 的距离以满足安全规范（请参考图五）。
- 受环境温度及产品负载的影响，本机外壳温度会很高，因此在上电时或切断电源后短时间内不要触摸本机，以免烫伤。
- 请勿在上电时触摸连接端子，以防电击危险。
- 安装过程中，应避免金属元件或金属导体通过空隙或通风孔进入到产品内，否则会引起下列状况。
— 电击；安全危害；火灾；产品异常
- 警告：**在连接产品电源供应时，产品必须先接地然后才接 L 和 N。当要解开电源供应时，必须先把 L 和 N 解开然后才把接地解开。安装时，电源供应器之铁壳必须以金属螺丝锁附于固定面，该固定面必须为金属材料并与电源主接地连接。并建议输入接地端子连接至电源主接地。

2. 产品外观介绍

依据图一：

- ① 输入/输出连接端子
- ② 直流电压调节电位器
- ③ 直流电控制 OK 指示灯 (绿色)

3. 产品固定方式

依据图二：

- (A) 在把产品安装在固定表面时，将螺丝锁入此固定孔。产品应该用长度至少 5mm 的 M3 螺丝锁入至少两个固定孔。
- (B) 此固定表面为客户系统表面。
- (C) 输入/输出连接端子。

- 电线的设计可使用多股或实心，AWG no. 22-12。扭矩不应该超过 13Kgf.cm 剥线的长度不应该超过 0.275" 或者 7mm (依据图三)。

4. 配件组合安装

- 在把配件装上产品时，请使用长度不超过 6mm 的 M3 螺丝锁入产品底面的固定孔。这是为了确保螺丝和内部元件间有足够的绝缘距离。
- 依据图四：
建议配件固定螺丝扭矩为 4~7Kgf.cm

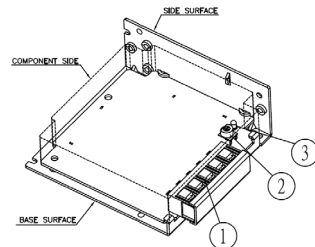
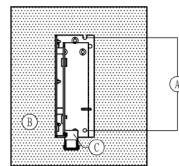
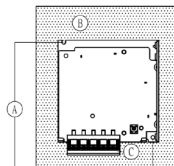


Fig. 1. Device Descriptions

Side Mounting (Vertical)



Base Mounting (Vertical)



Side Mounting (Horizontal)

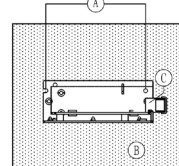


Fig. 2. Mounting Orientation



Lug



Stripped wire

Fig. 3. Wire Type

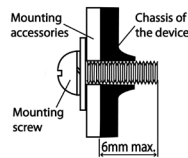


Fig. 4. Mounting Screw

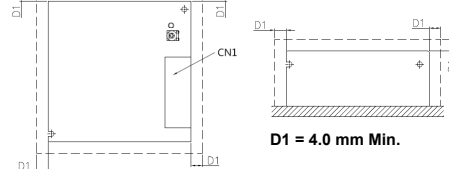


Fig. 5. Assembly Reference

1. 安全规范

- 与通风表面保持至少 20mm 的安全距离，以确保对冷却充分。
- 本产品不适合摆放在低热导体，例如：塑胶。
- 本产品安装完成后，周围设备必须与本产品保持至少 4mm 的距离以满足安全规范（请参考图四）。
- 受环境温度及产品负载的影响，本机外壳温度会很高，因此在上电时或切断电源后短时间内不要触摸本机，以免烫伤。
- 请勿在上电时触摸连接端子，以防电击危险。
- 安装过程中，应避免金属元件或金属导体通过空隙或通风孔进入到产品内，否则会引起下列状况。
 - 一电击；安全危害；火灾；产品异常
- 警告：在连接产品电源供应时，产品必须先接地然后才接 L 和 N。当要解开电源供应时，必须先把 L 和 N 解开然后才把接地解开。安装时，电源供应器之铁壳必须以金属螺丝锁附于固定面，该固定面必须为金属材质并与电源主接地连接。并建议输入接地端子连接至电源主接地。

2. 产品外观介绍

依据图一：

- ① 输入/输出连接端子
- ② 直流电压调节电位器
- ③ 直流电控制 OK 指示灯（绿色）

3. 产品固定方式

依据图二：

- Ⓐ 在把产品安装在固定表面时，将螺丝锁入此固定孔。产品应该用长度至少 5mm 的 M3 螺丝锁入至少两个固定孔。
- Ⓑ 此固定表面为客户系统表面。
- Ⓒ 输入/输出连接端子。

- 电线的设计可使用 AWG no. 22-18。建议使用之 Housing and Terminal（请参考 Tab.1）。

| | Connector (Board Mounting) | Housing | Terminal |
|--------------|----------------------------|---------|--------------|
| Input (JST) | B3P5-VH(LF)(SN) | VHR-5N | SVH-21T-P1.1 |
| Output (JST) | B2P3-VH(LF)(SN) | VHR-3N | |

4. 配件组合安装

- 在把配件装上产品时，请使用长度不超过 6mm 的 M3 螺丝锁入产品底面的固定孔。这是为了确保螺丝和内部元件间有足够的绝缘距离。
- 依据图三：
建议配件固定螺丝扭矩为 4~7Kgf.cm

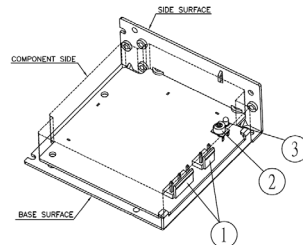
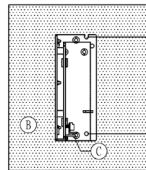
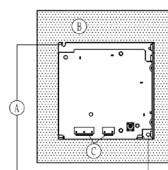


Fig. 1. Device Descriptions

Side Mounting (Vertical)



Base Mounting (Vertical)



Side Mounting (Horizontal)

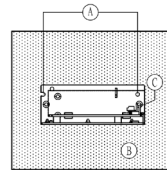


Fig. 2. Mounting Orientation

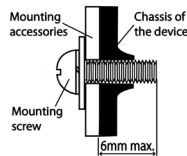


Fig. 3. Mounting Screw

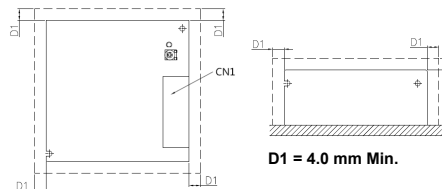


Fig. 4. Assembly Reference

1. Safety Instructions

- To ensure sufficient convection cooling, always maintain a safety distance of 20mm from all ventilated surfaces while the device is in operation.
- The device is not recommended to be placed on low thermal conductive surface, for example, plastics.
- For safety reason, please ensure the mounted device is kept at $\geq 4\text{mm}$ safety distance at all sides from other components and equipments (Refer to Fig. 4).
- Note that the enclosure of the device can become very hot depending on the ambient temperature and load of the power supply. Do not touch the device while it is in operation or immediately after power is turned OFF. Risk of burning!
- Do not touch the terminals while power is being supplied. Risk of electric shock.
- Prevent any foreign metal, particles or conductors to enter the device through the openings during installation. It can cause: - Electric shock; Safety Hazard; Fire; Product failure.
- Warning: When connecting the device, secure Earth connection before connecting L and N. When disconnecting the device, remove L and N connections before removing the Earth connection. The power supply must be mounted by metal screws onto a grounded metal surface. It is highly recommended that the Earth terminal on the connector be connected to the grounded metal surface.

2. Device Descriptions

Refer to Fig. 1.:

- ① Input & Output terminal block connector
- ② DC voltage adjustment potentiometer
- ③ DC OK control LED (Green)

3. Installation of the Device

Refer to Fig. 2.:

- Ⓐ Mounting holes for power supply assembly onto the mounting surface. Power supply shall be mounted on minimum 2 mounting holes using M3 screw minimum 5mm length.
- Ⓑ This surface belongs to customer's end system or panel where the power supply is mounted.
- Ⓒ Connector

- Use flexible cable (stranded or solid), AWG no. 22-12. The torque at the Connector shall not exceed 13Kgf.cm. The insulation stripping length should not exceed 0.275" or 7mm (Refer to Fig. 3).

4. Installation Notes

- The mounting holes on the mounting accessories for the device should be kept at a diameter of $< 6.5\text{mm}$. This is to ensure sufficient safety distance between the mounting screw and the components on the device (Refer to Fig. 4).
- Therefore, the diameter of the mounting screw should be kept at $< 6.5\text{mm}$.

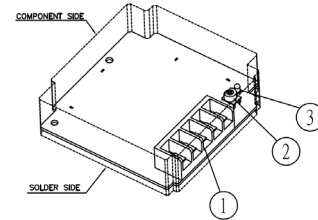


Fig. 1. Device Descriptions

Base Mounting (Vertical)

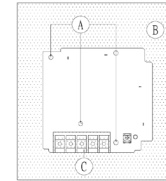
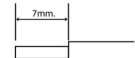


Fig. 2. Mounting Orientation



Lug



Stripped wire

Fig. 3. Wire Type

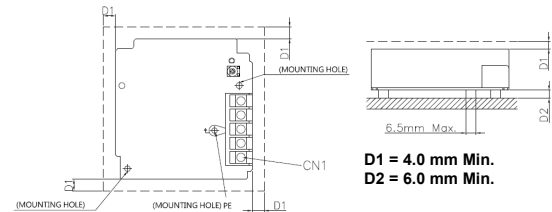


Fig. 4. Assembly Reference

1. Safety Instructions

- To ensure sufficient convection cooling, always maintain a safety distance of 20mm from all ventilated surfaces while the device is in operation.
- The device is not recommended to be placed on low thermal conductive surface, for example, plastics.
- For safety reason, please ensure the mounted device is kept at $\geq 4\text{mm}$ safety distance at all sides from other components and equipments (Refer to Fig. 4).
- Note that the enclosure of the device can become very hot depending on the ambient temperature and load of the power supply. Do not touch the device while it is in operation or immediately after power is turned OFF. Risk of burning!
- Do not touch the terminals while power is being supplied. Risk of electric shock.
- Prevent any foreign metal, particles or conductors to enter the device through the openings during installation. It can cause: - Electric shock; Safety Hazard; Fire; Product failure.
- Warning: When connecting the device, secure Earth connection before connecting L and N. When disconnecting the device, remove L and N connections before removing the Earth connection. The power supply must be mounted by metal screws onto a grounded metal surface. It is highly recommended that the Earth terminal on the connector be connected to the grounded metal surface.

2. Device Descriptions

Refer to Fig. 1.:

- ① Input & Output terminal block connector
- ② DC voltage adjustment potentiometer
- ③ DC OK control LED (Green)

3. Installation of the Device

Refer to Fig. 2.:

- Ⓐ Mounting holes for power supply assembly onto the mounting surface. Power supply shall be mounted on minimum 2 mounting holes using M3 screw minimum 5mm length.
- Ⓑ This surface belongs to customer's end system or panel where the power supply is mounted.
- Ⓒ Connector

- Use flexible cable (stranded or solid), AWG no. 22-12. The torque at the Connector shall not exceed 13Kgf.cm. The insulation stripping length should not exceed 0.275" or 7mm (Refer to Fig. 3).

4. Installation Notes

- The mounting holes on the mounting accessories for the device should be kept at a diameter of $< 6.5\text{mm}$. This is to ensure sufficient safety distance between the mounting screw and the components on the device (Refer to Fig. 4).
- Therefore, the diameter of the mounting screw should be kept at $< 6.5\text{mm}$.

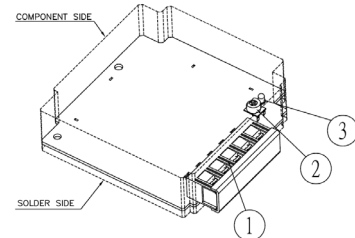


Fig. 1. Device Descriptions

Base Mounting (Vertical)

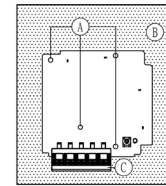
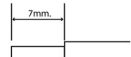


Fig. 2. Mounting Orientation



Lug



Stripped wire

Fig. 3. Wire Type

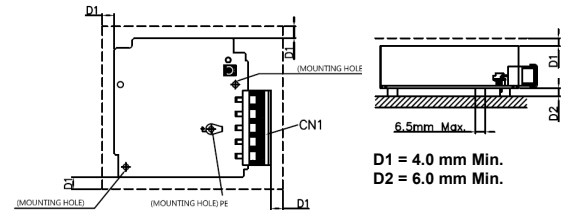


Fig. 4. Assembly Reference

1. Safety Instructions

- To ensure sufficient convection cooling, always maintain a safety distance of 20mm from all ventilated surfaces while the device is in operation.
- The device is not recommended to be placed on low thermal conductive surface, for example, plastics.
- For safety reason, please ensure the mounted device is kept at $\geq 4\text{mm}$ safety distance at all sides from other components and equipments (Refer to Fig. 3).
- Note that the enclosure of the device can become very hot depending on the ambient temperature and load of the power supply. Do not touch the device while it is in operation or immediately after power is turned OFF. Risk of burning!
- Do not touch the terminals while power is being supplied. Risk of electric shock.
- Prevent any foreign metal, particles or conductors to enter the device through the openings during installation. It can cause: - Electric shock; Safety Hazard; Fire; Product failure.
- Warning: When connecting the device, secure Earth connection before connecting L and N. When disconnecting the device, remove L and N connections before removing the Earth connection. The power supply must be mounted by metal screws onto a grounded metal surface. It is highly recommended that the Earth terminal on the connector be connected to the grounded metal surface.

2. Device Descriptions

Refer to Fig. 1.:

- ① Input & Output terminal block connector
- ② DC voltage adjustment potentiometer
- ③ DC OK control LED (Green)

3. Installation of the Device

Refer to Fig. 2.:

- (A) Mounting holes for power supply assembly onto the mounting surface. Power supply shall be mounted on minimum 2 mounting holes using M3 screw minimum 5mm length.
- (B) This surface belongs to customer's end system or panel where the power supply is mounted.
- (C) Connector

- Use flexible cable (stranded or solid), AWG no. 22-18.

| | Connector (Board Mounting) | Housing | Terminal |
|--------------|----------------------------|---------|--------------|
| Input (JST) | B3P5-VH(LF)(SN) | VHR-5N | SVH-21T-P1.1 |
| Output (JST) | B2P3-VH(LF)(SN) | VHR-3N | |

4. Installation Notes

- The mounting holes on the mounting accessories for the device should be kept at a diameter of $< 6.5\text{mm}$. This is to ensure sufficient safety distance between the mounting screw and the components on the device (Refer to Fig. 3).
- Therefore, the diameter of the mounting screw should be kept at $< 6.5\text{mm}$.

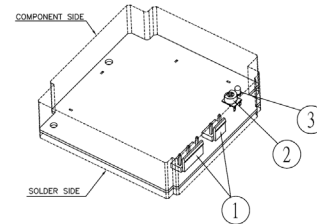


Fig. 1. Device Descriptions

Base Mounting (Vertical)

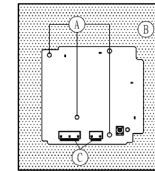


Fig. 2. Mounting Orientation

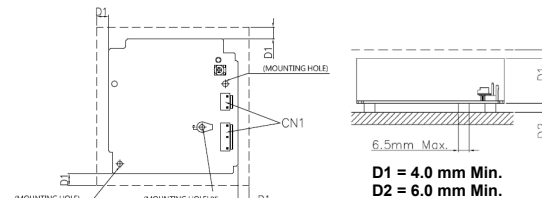


Fig. 3. Assembly Reference

1. 安全规范

- 与通风表面保持至少 20mm 的安全距离，以确保对流冷却充分。
- 本产品不适合摆放在低热导体，例如：塑胶。
- 本产品安装完成后，周围设备必须与本产品保持至少 4mm 的距离以满足安全规范（请参考图四）。
- 受环境温度及产品负载的影响，本机外壳温度会很高，因此在上电时或切断电源后短时间内不要触摸本机，以免烫伤。
- 请勿在上电时触摸连接端子，以防电击危险。
- 安装过程中，应避免金属元件或金属导体通过空隙或通风孔进入到产品内，否则会引起下列状况。
— 电击；安全危害；火灾；产品异常
- 警告：**在连接产品电源供应时，产品必须先接地然后才接 L 和 N。当要解开电源供应时，必须先把 L 和 N 解开然后才把接地解开。安装时，电源供应器之铁壳必须以金属螺丝锁附于固定面，该固定面必须为金属材质并与电源主接地连接。并建议输入接地端子连接至电源主接地。

2. 产品外观介绍

依据图一：

- ① 输入/输出连接端子
- ② 直流电压调节电位器
- ③ 直流电控制 OK 指示灯（绿色）

3. 产品固定方式

依据图二：

- Ⓐ 在把产品安装在固定表面时，将螺丝锁入此固定孔。产品应该用长度至少 5mm 的 M3 螺丝锁入至少两个固定孔。
- Ⓑ 此固定表面为客户系统表面。
- Ⓒ 输入/输出连接端子。

- 电线的设计可使用多股或实心，AWG no. 22-12。扭矩不应该超过 13Kgf.cm
剥线的长度不应该超过 0.275" 或者 7mm（依据图三）。

4. 安装注意事项

- 安装孔下方的支撑配件直径请维持 6.5mm 以内。这是为了确保支撑结构和元件间有足够的绝缘距离（请参考图四）。
- 固定螺丝头部直径请维持 6.5mm 以内。这是为了确保螺丝和内部元件间有足够的绝缘距离。

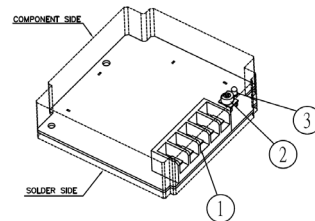


Fig. 1. Device Descriptions

Base Mounting (Vertical)

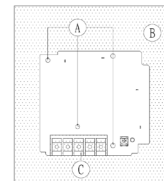
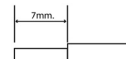


Fig. 2. Mounting Orientation



Lug



Stripped wire

Fig. 3. Wire Type

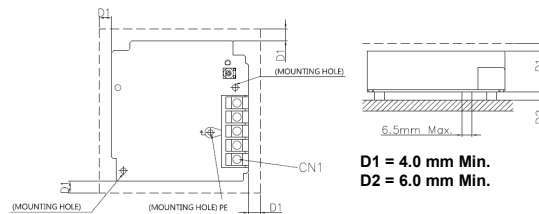


Fig. 4. Assembly Reference

1. 安全规范

- 与通风表面保持至少 20mm 的安全距离，以确保对流冷却充分。
- 本产品不适合摆放在低热导体，例如：塑胶。
- 本产品安装完成后，周围设备必须与本产品保持至少 4mm 的距离以满足安全规范（请参考图四）。
- 受环境温度及产品负载的影响，本机外壳温度会很高，因此在上电时或切断电源后短时间内不要触摸本机，以免烫伤。
- 请勿在上电时触摸连接端子，以防电击危险。
- 安装过程中，应避免金属元件或金属导体通过空隙或通风孔进入到产品内，否则会引起下列状况。
— 电击；安全危害；火灾；产品异常
- 警告：**在连接产品电源供应时，产品必须先接地然后才接 L 和 N。当要解开电源供应时，必须先把 L 和 N 解开然后才把接地解开。安装时，电源供应器之铁壳必须以金属螺丝锁附于固定面，该固定面必须为金属材质并与电源主接地连接。并建议输入接地端子连接至电源主接地。

2. 产品外观介绍

依据图一：

- ① 输入/输出连接端子
- ② 直流电压调节电位器
- ③ 直流电控制 OK 指示灯 (绿色)

3. 产品固定方式

依据图二：

- Ⓐ 在把产品安装在固定表面时，将螺丝锁入此固定孔。产品应该用长度至少 5mm 的 M3 螺丝锁入至少两个固定孔。
- Ⓑ 此固定表面为客户系统表面。
- Ⓒ 输入/输出连接端子。

- 电线的设计可使用多股或实心，AWG no. 22-12。扭矩不应该超过 13Kgf.cm 剥线的长度不应该超过 0.275" 或者 7mm (依据图三)。

4. 安装注意事项

- 安装孔下方的支撑配件直径请维持 6.5mm 以内。这是为了确保支撑结构和元件间有足够的绝缘距离 (请参考图四)。
- 固定螺丝头部直径请维持 6.5mm 以内。这是为了确保螺丝和内部元件间有足够的绝缘距离。

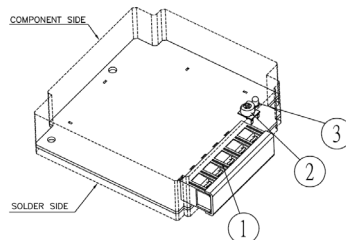


Fig. 1. Device Descriptions

Base Mounting (Vertical)

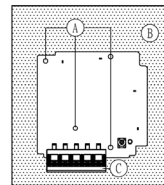
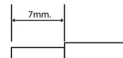


Fig. 2. Mounting Orientation



Lug



Stripped wire

Fig. 3. Wire Type

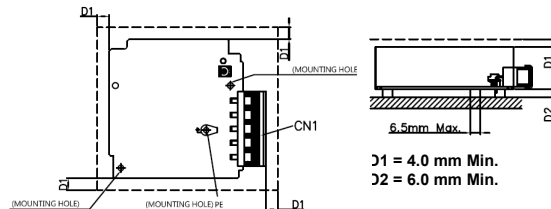


Fig. 4. Assembly Reference

1. 安全规范

- 与通风表面保持至少 20mm 的安全距离，以确保对流冷却充分。
- 本产品不适合摆放在低热导体，例如：塑胶。
- 本产品安装完成后，周围设备必须与本产品保持至少 4mm 的距离以满足安全规范（请参考图三）。
- 受环境温度及产品负载的影响，本机外壳温度会很高，因此在上电时或切断电源后短时间内不要触摸本机，以免烫伤。
- 请勿在上电时触摸连接端子，以防电击危险。
- 安装过程中，应避免金属元件或金属导体通过空隙或通风孔进入到产品内，否则会引起下列状况。
 - 一电击；安全危害；火灾；产品异常
- 警告：**在连接产品电源供应时，产品必须先接地然后才接 L 和 N。当要解开电源供应时，必须先把 L 和 N 解开然后才把接地解开。安装时，电源供应器之铁壳必须以金属螺丝锁附于固定面，该固定面必须为金属材质并与电源主接地连接。并建议输入接地端子连接至电源主接地。

2. 产品外观介绍

依据图一：

- ① 输入/输出连接端子
- ② 直流电压调节电位器
- ③ 直流电控制 OK 指示灯（绿色）

3. 产品固定方式

依据图二：

- Ⓐ 在把产品安装在固定表面时，将螺丝锁入此固定孔。产品应该用长度至少 5mm 的 M3 螺丝锁入至少两个固定孔。
 - Ⓑ 此固定表面为客户系统表面。
 - Ⓒ 输入/输出连接端子。
- 电线的设计可使用 AWG no. 22-18。建议使用之 Housing and Terminal（请参考 Tab.1）。

| | Connector (Board Mounting) | Housing | Terminal |
|--------------|----------------------------|---------|--------------|
| Input (JST) | B3P5-VH(LF)(SN) | VHR-5N | SVH-21T-P1.1 |
| Output (JST) | B2P3-VH(LF)(SN) | VHR-3N | |

4. 安装注意事项

- 安装孔下方的支撑配件直径请维持 6.5mm 以内。这是为了确保支撑结构和元件间有足够的绝缘距离（请参考图三）。
- 固定螺丝头部直径请维持 6.5mm 以内。这是为了确保螺丝和内部元件间有足够的绝缘距离。

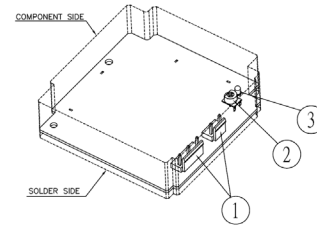


Fig. 1. Device Descriptions

Base Mounting (Vertical)

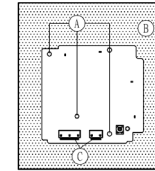


Fig. 2. Mounting Orientation

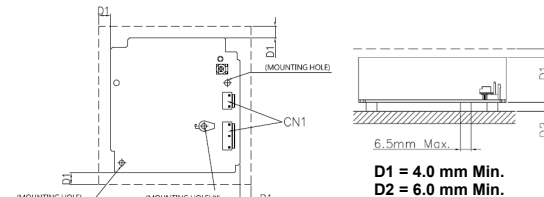


Fig. 3. Assembly Reference